



SZABO SCANDIC

Part of Europa Biosite

Produktinformation



Forschungsprodukte & Biochemikalien



Zellkultur & Verbrauchsmaterial



Diagnostik & molekulare Diagnostik



Laborgeräte & Service

Weitere Information auf den folgenden Seiten!
See the following pages for more information!



Lieferung & Zahlungsart

siehe unsere [Liefer- und Versandbedingungen](#)

Zuschläge

- Mindermengenzuschlag
- Trockeneiszuschlag
- Gefahrgutzuschlag
- Expressversand

SZABO-SCANDIC HandelsgmbH

Quellenstraße 110, A-1100 Wien

T. +43(0)1 489 3961-0

F. +43(0)1 489 3961-7

mail@szabo-scandic.com

www.szabo-scandic.com

[linkedin.com/company/szaboscandic](https://www.linkedin.com/company/szaboscandic) 

Bcl-2 antibody [AT1B5]

Cat No. GTX57574

Host	Mouse
Clonality	Monoclonal
Isotype	IgG2b
Application	WB, ICC/IF, FACS
Reactivity	Human, Mouse

Package
100 µl

APPLICATION

Application Note

*Optimal dilutions/concentrations should be determined by the researcher.

Suggested dilution	Dilution
WB	1:250-1:500
ICC/IF	1:250-1:500
FACS	Assay dependent

Not tested in other applications.

Calculated MW 26 kDa. ([Note](#))

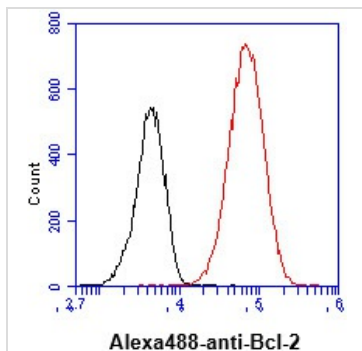
PROPERTIES

Form	Liquid
Buffer	PBS (pH 7.4), 0.02% sodium azide, 10% glycerol
Storage	Store as concentrated solution. Centrifuge briefly prior to opening vial. For short-term storage (1-2 weeks), store at 4°C. For long-term storage, aliquot and store at -20°C or below. Avoid multiple freeze-thaw cycles.
Concentration	1 mg/ml (Please refer to the vial label for the specific concentration.)
Immunogen	The clone AT1B5 is derived from hybridization of mouse FO myeloma cells with spleen cells from BALB/c mice immunized with a recombinant human Bcl-4 protein.
Purification	Protein G Purified
Conjugation	Unconjugated
Note	For laboratory use only. Not for any clinical, therapeutic, or diagnostic use in humans or animals. Not for animal or human consumption.



For full product information, images and publications, please visit our [website](#).

DATA IMAGES

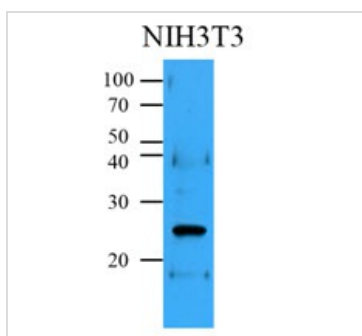
**GTX57574 FACS Image**

FACS analysis of HeLa cells using GTX57574 Bcl-2 antibody.

Cell Number: 1×10^6 cells

Primary antibody: Red line

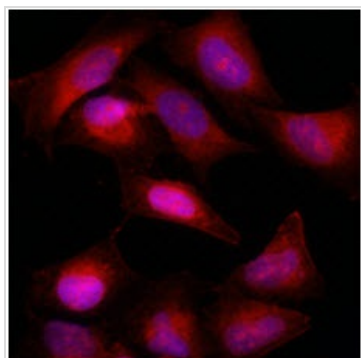
Antibody amount: 2-5 μ g

**GTX57574 WB Image**

WB analysis of NIH3T3 whole cell lysate using GTX57574 Bcl-2 antibody.

Loading : 35 μ g

Dilution : 1:500

**GTX57574 ICC/IF Image**

ICC/IF analysis of HeLa cells using GTX57574 Bcl-2 antibody.

Blue: Hoechst 33342

Red: Primary antibody

Dilution: 1:500



For full product information, images and publications, please visit our [website](#).