



SZABO SCANDIC

Part of Europa Biosite

Produktinformation



Forschungsprodukte & Biochemikalien



Zellkultur & Verbrauchsmaterial



Diagnostik & molekulare Diagnostik



Laborgeräte & Service

Weitere Information auf den folgenden Seiten!
See the following pages for more information!



Lieferung & Zahlungsart

siehe unsere [Liefer- und Versandbedingungen](#)

Zuschläge

- Mindermengenzuschlag
- Trockeneiszuschlag
- Gefahrgutzuschlag
- Expressversand

SZABO-SCANDIC HandelsgmbH

Quellenstraße 110, A-1100 Wien

T. +43(0)1 489 3961-0

F. +43(0)1 489 3961-7

mail@szabo-scandic.com

www.szabo-scandic.com

[linkedin.com/company/szaboscandic](https://www.linkedin.com/company/szaboscandic) 

Pyruvate Kinase (liver/RBC) antibody [AT1E3]

Cat No. GTX57581

Host	Mouse
Clonality	Monoclonal
Isotype	IgG1
Application	WB, ICC/IF
Reactivity	Human, Mouse

Package
100 µl

APPLICATION

Application Note

*Optimal dilutions/concentrations should be determined by the researcher.

Suggested dilution	Dilution
WB	1:500
ICC/IF	Assay dependent

Not tested in other applications.

Calculated MW 62 kDa. ([Note](#))

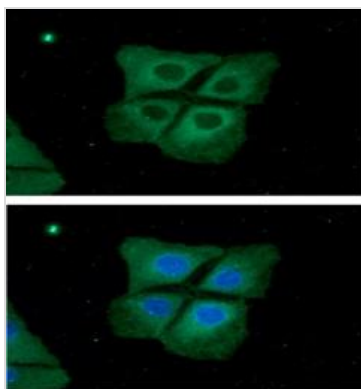
PROPERTIES

Form	Liquid
Buffer	PBS (pH 7.4), 0.02% sodium azide, 10% glycerol
Storage	Store as concentrated solution. Centrifuge briefly prior to opening vial. For short-term storage (1-2 weeks), store at 4°C. For long-term storage, aliquot and store at -20°C or below. Avoid multiple freeze-thaw cycles.
Concentration	1 mg/ml (Please refer to the vial label for the specific concentration.)
Immunogen	The clone AT1E3 is derived from hybridization of mouse F2 myeloma cells with spleen cells from BALB/c mice immunized with a recombinant human PKLR protein.
Purification	Protein G Purified
Conjugation	Unconjugated
Note	For laboratory use only. Not for any clinical, therapeutic, or diagnostic use in humans or animals. Not for animal or human consumption.



For full product information, images and publications, please visit our [website](#).

DATA IMAGES



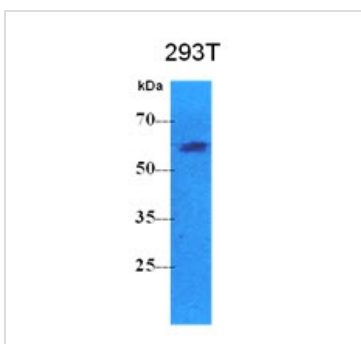
GTX57581 ICC/IF Image

ICC/IF analysis of Hep3B cells using GTX57581 Pyruvate Kinase (liver/RBC) antibody.

Blue: DAPI

Green: Primary antibody

Dilution: 1:100

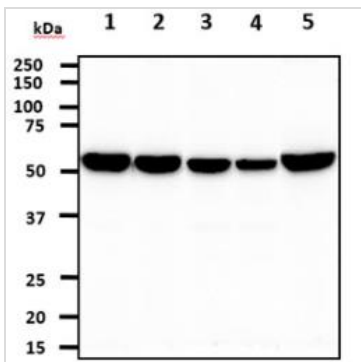


GTX57581 WB Image

WB analysis of 293T whole cell lysate using GTX57581 Pyruvate Kinase (liver/RBC) antibody.

Loading : 40 µg

Dilution : 1:500



GTX57581 WB Image

WB analysis of various samples using GTX57581 Pyruvate Kinase (liver/RBC) antibody.

Lane 1 : Balb/3T3 whole cell lysate

Lane 2 : HeLa whole cell lysate

Lane 3 : Raji whole cell lysate

Lane 4 : K562 whole cell lysate

Lane 5 : A549 whole cell lysate

Loading : 40 µg

Dilution : 1:500



For full product information, images and publications, please visit our [website](#).