



SZABO SCANDIC

Part of Europa Biosite

Produktinformation



Forschungsprodukte & Biochemikalien



Zellkultur & Verbrauchsmaterial



Diagnostik & molekulare Diagnostik



Laborgeräte & Service

Weitere Information auf den folgenden Seiten!
See the following pages for more information!



Lieferung & Zahlungsart

siehe unsere [Liefer- und Versandbedingungen](#)

Zuschläge

- Mindermengenzuschlag
- Trockeneiszuschlag
- Gefahrgutzuschlag
- Expressversand

SZABO-SCANDIC HandelsgmbH

Quellenstraße 110, A-1100 Wien

T. +43(0)1 489 3961-0

F. +43(0)1 489 3961-7

mail@szabo-scandic.com

www.szabo-scandic.com

[linkedin.com/company/szaboscandic](https://www.linkedin.com/company/szaboscandic) 

alpha Synuclein antibody [AT1E10]

Cat No. GTX57587

Host	Mouse
Clonality	Monoclonal
Isotype	IgG1
Application	WB, ICC/IF
Reactivity	Human

Package
100 µl

APPLICATION

Application Note

*Optimal dilutions/concentrations should be determined by the researcher.

Suggested dilution	Dilution
WB	Recommended starting dilution is 1:500.
ICC/IF	Assay dependent

Not tested in other applications.

Calculated MW 14 kDa. ([Note](#))

Specificity/Sensitivity Based on internal testing result, this antibody does not cross react with human beta- and gamma-synuclein protein.

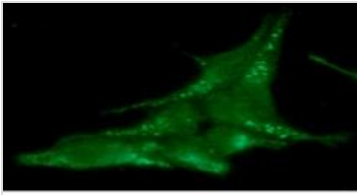
PROPERTIES

Form	Liquid
Buffer	PBS (pH 7.4), 0.02% sodium azide, 10% glycerol
Storage	Store as concentrated solution. Centrifuge briefly prior to opening vial. For short-term storage (1-2 weeks), store at 4°C. For long-term storage, aliquot and store at -20°C or below. Avoid multiple freeze-thaw cycles.
Concentration	1 mg/ml (Please refer to the vial label for the specific concentration.)
Immunogen	The clone AT1E10 is derived from hybridization of mouse F2 myeloma cells with spleen cells from BALB/c mice immunized with a recombinant human alpha-synuclein protein.
Purification	Protein A Purified
Conjugation	Unconjugated
Note	For laboratory use only. Not for any clinical, therapeutic, or diagnostic use in humans or animals. Not for animal or human consumption.



For full product information, images and publications, please visit our [website](#).

DATA IMAGES



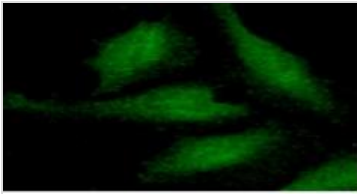
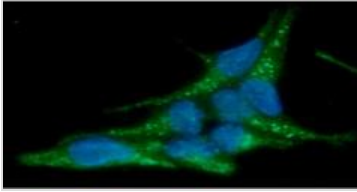
GTX57587 ICC/IF Image

ICC/IF analysis of LNCaP cells using GTX57587 alpha Synuclein antibody.

Blue: DAPI

Green: Primary antibody

Dilution: 1:100



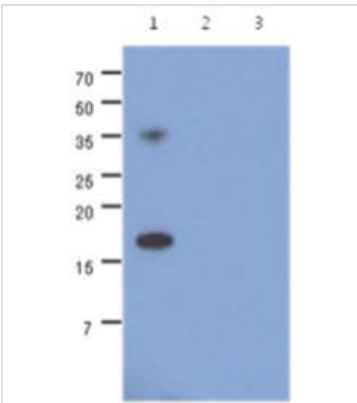
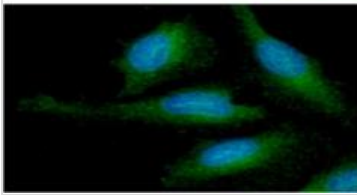
GTX57587 ICC/IF Image

ICC/IF analysis of HeLa cells using GTX57587 alpha Synuclein antibody.

Blue: DAPI

Green: Primary antibody

Dilution: 1:100



GTX57587 WB Image

WB analysis of various samples using GTX57587 alpha Synuclein antibody.

Lane 1 : Recombinant Human alpha-synuclein

Lane 2 : Recombinant Human beta-synuclein

Lane 3 : Recombinant Human gamma-synuclein

Loading : 100 ng

Dilution : 1:500



For full product information, images and publications, please visit our [website](#).