



SZABO SCANDIC

Part of Europa Biosite

Produktinformation



Forschungsprodukte & Biochemikalien



Zellkultur & Verbrauchsmaterial



Diagnostik & molekulare Diagnostik



Laborgeräte & Service

Weitere Information auf den folgenden Seiten!
See the following pages for more information!



Lieferung & Zahlungsart

siehe unsere [Liefer- und Versandbedingungen](#)

Zuschläge

- Mindermengenzuschlag
- Trockeneiszuschlag
- Gefahrgutzuschlag
- Expressversand

SZABO-SCANDIC HandelsgmbH

Quellenstraße 110, A-1100 Wien

T. +43(0)1 489 3961-0

F. +43(0)1 489 3961-7

mail@szabo-scandic.com

www.szabo-scandic.com

[linkedin.com/company/szaboscandic](https://www.linkedin.com/company/szaboscandic) 

Cytokeratin 19 antibody [AT13D10]

Cat No. GTX57591

Host	Mouse
Clonality	Monoclonal
Isotype	IgG2b
Application	WB, ICC/IF, FACS
Reactivity	Human

Package
100 µl

APPLICATION

Application Note

*Optimal dilutions/concentrations should be determined by the researcher.

Suggested dilution	Dilution
WB	Recommended starting dilution is 1:1000.
ICC/IF	Assay dependent
FACS	Assay dependent

Not tested in other applications.

Calculated MW 44 kDa. ([Note](#))

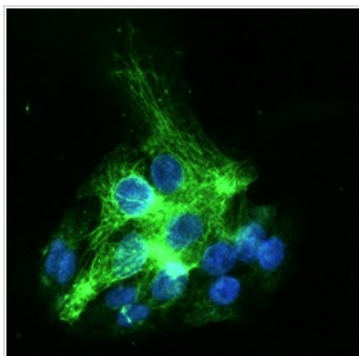
PROPERTIES

Form	Liquid
Buffer	PBS (pH 7.4), 0.02% sodium azide, 10% glycerol
Storage	Store as concentrated solution. Centrifuge briefly prior to opening vial. For short-term storage (1-2 weeks), store at 4°C. For long-term storage, aliquot and store at -20°C or below. Avoid multiple freeze-thaw cycles.
Concentration	1 mg/ml (Please refer to the vial label for the specific concentration.)
Immunogen	The clone AT13D10 is derived from hybridization of mouse F0 myeloma cells with spleen cells from BALB/c mice immunized with a recombinant human KRT21 protein.
Purification	Protein A Purified
Conjugation	Unconjugated
Note	For laboratory use only. Not for any clinical, therapeutic, or diagnostic use in humans or animals. Not for animal or human consumption.



For full product information, images and publications, please visit our [website](#).

DATA IMAGES



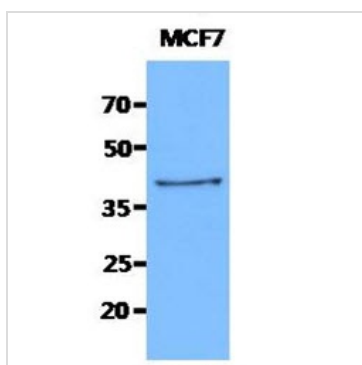
GTX57591 ICC/IF Image

ICC/IF analysis of HepG2 cells using GTX57591 Cytokeratin 19 antibody.

Blue: DAPI

Green: Primary antibody

Dilution: 1:100

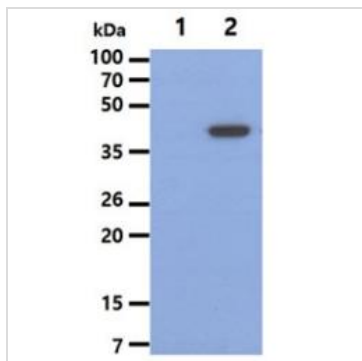


GTX57591 WB Image

WB analysis of MCF-7 whole cell lysate using GTX57591 Cytokeratin 19 antibody.

Loading : 40 µg

Dilution : 1:1000



GTX57591 WB Image

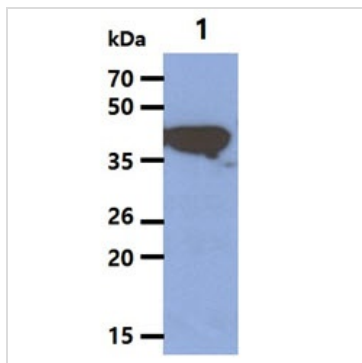
WB analysis of various samples using GTX57591 Cytokeratin 19 antibody.

Lane 1 : 293T cell lysate

Lane 2 : KRT19 transfected 293T cell lysate

Loading : 5 µg

Dilution : 1:1000



GTX57591 WB Image

WB analysis of HepG2 whole cell lysate using GTX57591 Cytokeratin 19 antibody.

Loading : 20 µg

Dilution : 1:1000



For full product information, images and publications, please visit our [website](#).