



SZABO SCANDIC

Part of Europa Biosite

Produktinformation



Forschungsprodukte & Biochemikalien



Zellkultur & Verbrauchsmaterial



Diagnostik & molekulare Diagnostik



Laborgeräte & Service

Weitere Information auf den folgenden Seiten!
See the following pages for more information!



Lieferung & Zahlungsart

siehe unsere [Liefer- und Versandbedingungen](#)

Zuschläge

- Mindermengenzuschlag
- Trockeneiszuschlag
- Gefahrgutzuschlag
- Expressversand

SZABO-SCANDIC HandelsgmbH

Quellenstraße 110, A-1100 Wien

T. +43(0)1 489 3961-0

F. +43(0)1 489 3961-7

mail@szabo-scandic.com

www.szabo-scandic.com

[linkedin.com/company/szaboscandic](https://www.linkedin.com/company/szaboscandic) 

Cathepsin S antibody [AT1F9]

Cat No. GTX57592

Host	Mouse
Clonality	Monoclonal
Isotype	IgG2b
Application	WB, ICC/IF
Reactivity	Human

Package
100 µl

APPLICATION

Application Note

*Optimal dilutions/concentrations should be determined by the researcher.

Suggested dilution	Dilution
WB	Recommended starting dilution is 1:500.
ICC/IF	Assay dependent

Not tested in other applications.

Calculated MW 38 kDa. ([Note](#))

Specificity/Sensitivity Based on internal testing result, this antibody does not cross react with human CTSB, human CTSD, human CTSE, human CTSF, human CTSI, human CTSK, human CTSL, human CTSW, and human CTSZ.

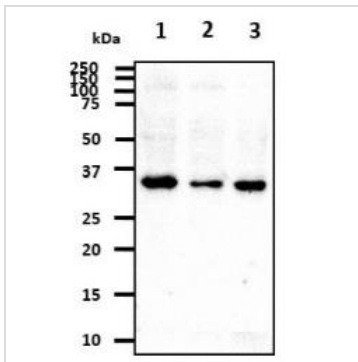
PROPERTIES

Form	Liquid
Buffer	PBS (pH 7.4), 0.02% sodium azide, 10% glycerol
Storage	Store as concentrated solution. Centrifuge briefly prior to opening vial. For short-term storage (1-2 weeks), store at 4°C. For long-term storage, aliquot and store at -20°C or below. Avoid multiple freeze-thaw cycles.
Concentration	1 mg/ml (Please refer to the vial label for the specific concentration.)
Immunogen	The clone AT1F9 is derived from hybridization of mouse F2 myeloma cells with spleen cells from BALB/c mice immunized with a recombinant human CTSS protein.
Purification	Protein A Purified
Conjugation	Unconjugated
Note	For laboratory use only. Not for any clinical, therapeutic, or diagnostic use in humans or animals. Not for animal or human consumption.



For full product information, images and publications, please visit our [website](#).

DATA IMAGES

**GTX57592 WB Image**

WB analysis of various samples using GTX57592 Cathepsin S antibody.

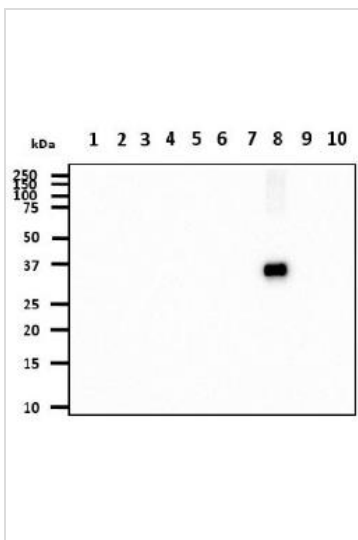
Lane 1 : HeLa whole cell lysate

Lane 2 : U87-MG whole cell lysate

Lane 3 : A549 whole cell lysate

Loading : 40 µg

Dilution : 1:500

**GTX57592 WB Image**

WB analysis of various samples using GTX57592 Cathepsin S antibody.

Lane 1 : Recombinant Human CTSB protein

Lane 2 : Recombinant Human CTSD protein

Lane 3 : Recombinant Human CTSE protein

Lane 4 : Recombinant Human CTSF protein

Lane 5 : Recombinant Human CTSH protein

Lane 6 : Recombinant Human CTSK protein

Lane 7 : Recombinant Human CTSL protein

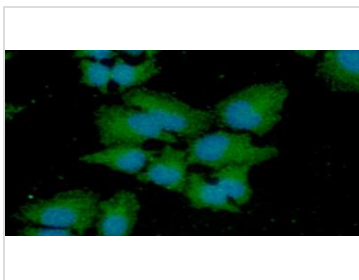
Lane 8 : Recombinant Human CTSS protein

Lane 9 : Recombinant Human CTSW protein

Lane 10 : Recombinant Human CTSZ protein

Loading : 20 ng

Dilution : 1:1000

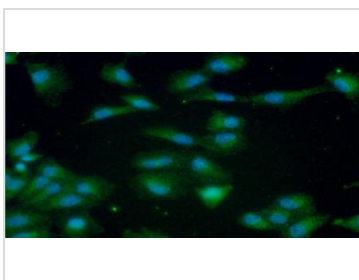
**GTX57592 ICC/IF Image**

ICC/IF analysis of HeLa cells using GTX57592 Cathepsin S antibody.

Blue: DAPI

Green: Primary antibody

Dilution: 1:100

**GTX57592 ICC/IF Image**

ICC/IF analysis of A549 cells using GTX57592 Cathepsin S antibody.

Blue: DAPI

Green: Primary antibody

Dilution: 1:100



For full product information, images and publications, please visit our [website](#).