



# SZABO SCANDIC

Part of Europa Biosite

## Produktinformation



Forschungsprodukte & Biochemikalien



Zellkultur & Verbrauchsmaterial



Diagnostik & molekulare Diagnostik



Laborgeräte & Service

Weitere Information auf den folgenden Seiten!  
See the following pages for more information!



### Lieferung & Zahlungsart

siehe unsere [Liefer- und Versandbedingungen](#)

### Zuschläge

- Mindermengenzuschlag
- Trockeneiszuschlag
- Gefahrgutzuschlag
- Expressversand

### SZABO-SCANDIC HandelsgmbH

Quellenstraße 110, A-1100 Wien

T. +43(0)1 489 3961-0

F. +43(0)1 489 3961-7

[mail@szabo-scandic.com](mailto:mail@szabo-scandic.com)

[www.szabo-scandic.com](http://www.szabo-scandic.com)

[linkedin.com/company/szaboscandic](https://www.linkedin.com/company/szaboscandic)

## Diablo antibody [AT19F2]

Cat No. GTX57593

<b>Host</b>	Mouse
<b>Clonality</b>	Monoclonal
<b>Isotype</b>	IgG2a
<b>Application</b>	WB, ICC/IF, FACS
<b>Reactivity</b>	Human

Package  
100 µl

## APPLICATION

## Application Note

\*Optimal dilutions/concentrations should be determined by the researcher.

Suggested dilution	Dilution
WB	Recommended starting dilution is 1:3000.
ICC/IF	Assay dependent
FACS	Assay dependent

Not tested in other applications.

<b>Calculated MW</b>	27 kDa. ( <a href="#">Note</a> )
<b>Observed MW</b>	21 kDa. The observed M.W. is based on the following publication. PMID: 29444163

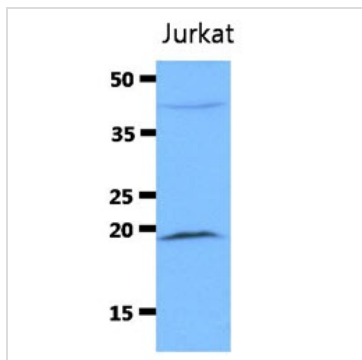
## PROPERTIES

<b>Form</b>	Liquid
<b>Buffer</b>	PBS (pH 7.4), 0.02% sodium azide, 10% glycerol
<b>Storage</b>	Store as concentrated solution. Centrifuge briefly prior to opening vial. For short-term storage (1-2 weeks), store at 4°C. For long-term storage, aliquot and store at -20°C or below. Avoid multiple freeze-thaw cycles.
<b>Concentration</b>	1 mg/ml (Please refer to the vial label for the specific concentration.)
<b>Immunogen</b>	The clone AT19F2 is derived from hybridization of mouse F2 myeloma cells with spleen cells from BALB/c mice immunized with a recombinant human SMAC/Diablo protein.
<b>Purification</b>	Protein A Purified
<b>Conjugation</b>	Unconjugated
<b>Note</b>	For laboratory use only. Not for any clinical, therapeutic, or diagnostic use in humans or animals. Not for animal or human consumption.



For full product information, images and publications, please visit our [website](#).

DATA IMAGES

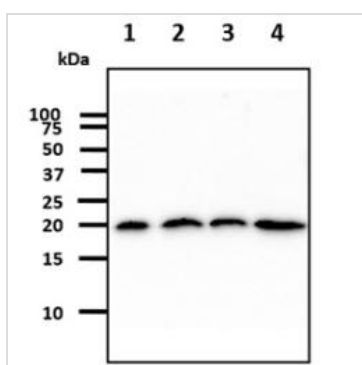


**GTX57593 WB Image**

WB analysis of Jurkat whole cell lysate using GTX57593 Diablo antibody.

Loading : 40 µg

Dilution : 1:3000



**GTX57593 WB Image**

WB analysis of various samples using GTX57593 Diablo antibody.

Lane 1 : 293T whole cell lysate

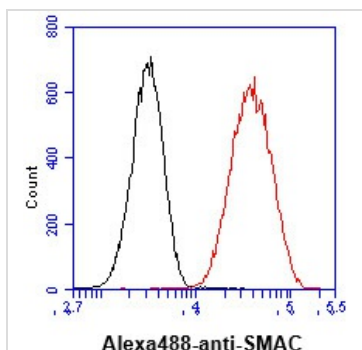
Lane 2 : A431 whole cell lysate

Lane 3 : Hep3B whole cell lysate

Lane 4 : MCF-7 whole cell lysate

Loading : 40 µg

Dilution : 1:1000



**GTX57593 FACS Image**

FACS analysis of HeLa cells using GTX57593 Diablo antibody.

Cell Number: 1 x 10<sup>6</sup> cells

Primary antibody: Red line

Antibody amount: 2-5 µg



For full product information, images and publications, please visit our [website](#).