



SZABO SCANDIC

Part of Europa Biosite

Produktinformation



Forschungsprodukte & Biochemikalien



Zellkultur & Verbrauchsmaterial



Diagnostik & molekulare Diagnostik



Laborgeräte & Service

Weitere Information auf den folgenden Seiten!
See the following pages for more information!



Lieferung & Zahlungsart

siehe unsere [Liefer- und Versandbedingungen](#)

Zuschläge

- Mindermengenzuschlag
- Trockeneiszuschlag
- Gefahrgutzuschlag
- Expressversand

SZABO-SCANDIC HandelsgmbH

Quellenstraße 110, A-1100 Wien

T. +43(0)1 489 3961-0

F. +43(0)1 489 3961-7

mail@szabo-scandic.com

www.szabo-scandic.com

[linkedin.com/company/szaboscandic](https://www.linkedin.com/company/szaboscandic) 

NSE antibody [AT17D10]

Cat No. GTX57594

Host	Mouse
Clonality	Monoclonal
Isotype	IgG2b
Application	WB, ICC/IF
Reactivity	Human, Mouse

Package
100 µl

APPLICATION

Application Note

*Optimal dilutions/concentrations should be determined by the researcher.

Suggested dilution	Dilution
WB	1:500-1:5000
ICC/IF	Assay dependent

Not tested in other applications.

Calculated MW 47 kDa. ([Note](#))

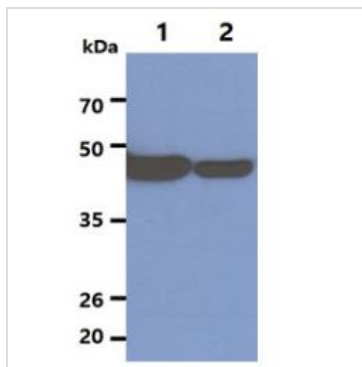
Specificity/Sensitivity Based on internal testing result, this antibody does not cross react with human ENO1 and human ENO3.

PROPERTIES

Form	Liquid
Buffer	PBS (pH 7.4), 0.02% sodium azide, 10% glycerol
Storage	Store as concentrated solution. Centrifuge briefly prior to opening vial. For short-term storage (1-2 weeks), store at 4°C. For long-term storage, aliquot and store at -20°C or below. Avoid multiple freeze-thaw cycles.
Concentration	1 mg/ml (Please refer to the vial label for the specific concentration.)
Immunogen	The clone AT17D10 is derived from hybridization of mouse F2 myeloma cells with spleen cells from BALB/c mice immunized with a recombinant human NSE protein.
Purification	Protein A Purified
Conjugation	Unconjugated
Note	For laboratory use only. Not for any clinical, therapeutic, or diagnostic use in humans or animals. Not for animal or human consumption.



For full product information, images and publications, please visit our [website](#).

DATA IMAGES

GTX57594 WB Image

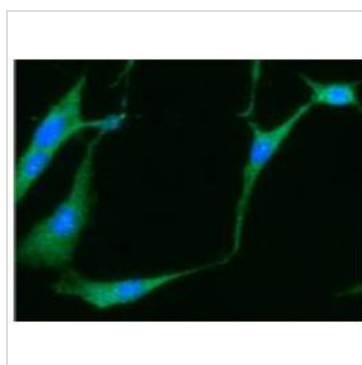
WB analysis of various samples using GTX57594 NSE antibody.

Lane 1 : U87-MG whole cell lysate

Lane 2 : Jurkat whole cell lysate

Loading : 20 µg

Dilution : 1:1000

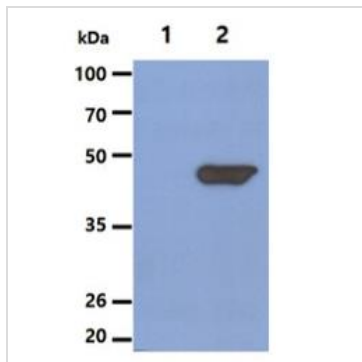

GTX57594 ICC/IF Image

ICC/IF analysis of U87-MG cells using GTX57594 NSE antibody.

Blue: DAPI

Green: Primary antibody

Dilution: 1:100


GTX57594 WB Image

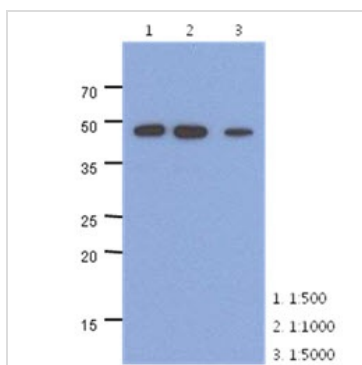
WB analysis of various samples using GTX57594 NSE antibody.

Lane 1 : 293T cell lysate

Lane 2 : NSE transfected 293T cell lysate

Loading : 5 µg

Dilution : 1:1000


GTX57594 WB Image

WB analysis of Mouse brain tissue lysate using GTX57594 NSE antibody.

Loading : 40 µg

Dilution : 1:500~1:5000



For full product information, images and publications, please visit our [website](#).