



# SZABO SCANDIC

Part of Europa Biosite

## Produktinformation



Forschungsprodukte & Biochemikalien



Zellkultur & Verbrauchsmaterial



Diagnostik & molekulare Diagnostik



Laborgeräte & Service

Weitere Information auf den folgenden Seiten!  
See the following pages for more information!



### Lieferung & Zahlungsart

siehe unsere [Liefer- und Versandbedingungen](#)

### Zuschläge

- Mindermengenzuschlag
- Trockeneiszuschlag
- Gefahrgutzuschlag
- Expressversand

### SZABO-SCANDIC HandelsgmbH

Quellenstraße 110, A-1100 Wien

T. +43(0)1 489 3961-0

F. +43(0)1 489 3961-7

[mail@szabo-scandic.com](mailto:mail@szabo-scandic.com)

[www.szabo-scandic.com](http://www.szabo-scandic.com)

[linkedin.com/company/szaboscandic](https://www.linkedin.com/company/szaboscandic) 

# 14-3-3 gamma antibody [AT4B9]

**Cat No. GTX57599**

<b>Host</b>	Mouse
<b>Clonality</b>	Monoclonal
<b>Isotype</b>	IgG1
<b>Application</b>	WB, ICC/IF
<b>Reactivity</b>	Human, Mouse

**Package**  
100 µl

**APPLICATION**
**Application Note**

\*Optimal dilutions/concentrations should be determined by the researcher.

Suggested dilution	Dilution
WB	Recommended starting dilution is 1:1000.
ICC/IF	Assay dependent

Not tested in other applications.

**Calculated MW** 28 kDa. ([Note](#))

**Specificity/Sensitivity** Based on internal testing result, this antibody does not cross react with human YWHAZ, human YWHAB, human YWHAE, human YWHAH, human SFN, and human YWHAQ.

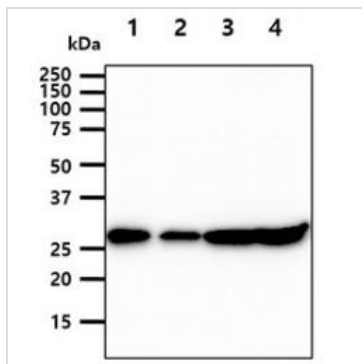
**PROPERTIES**

<b>Form</b>	Liquid
<b>Buffer</b>	PBS (pH 7.4), 0.02% sodium azide, 10% glycerol
<b>Storage</b>	Store as concentrated solution. Centrifuge briefly prior to opening vial. For short-term storage (1-2 weeks), store at 4°C. For long-term storage, aliquot and store at -20°C or below. Avoid multiple freeze-thaw cycles.
<b>Concentration</b>	1 mg/ml (Please refer to the vial label for the specific concentration.)
<b>Immunogen</b>	The clone AT4B9 is derived from hybridization of mouse F0 myeloma cells with spleen cells from BALB/c mice immunized with a recombinant human 14-3-5 gamma protein.
<b>Purification</b>	Protein A Purified
<b>Conjugation</b>	Unconjugated
<b>Note</b>	For laboratory use only. Not for any clinical, therapeutic, or diagnostic use in humans or animals. Not for animal or human consumption.



For full product information, images and publications, please visit our [website](#).

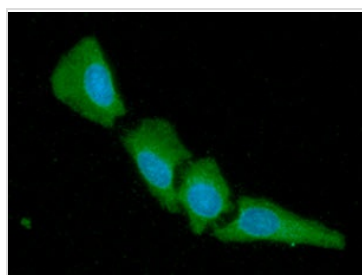
DATA IMAGES



**GTX57599 WB Image**

WB analysis of various samples using GTX57599 14-3-3 gamma antibody.

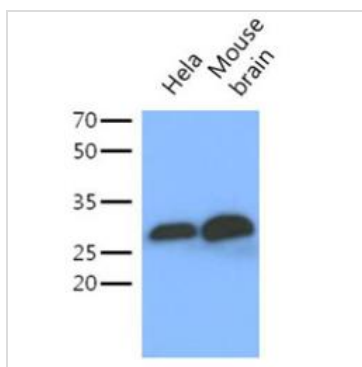
- Lane 1 : 293T whole cell lysate
- Lane 2 : A431 whole cell lysate
- Lane 3 : K562 whole cell lysate
- Lane 4 : NIH-3T3 whole cell lysate
- Loading : 40 µg
- Dilution : 1:1000



**GTX57599 ICC/IF Image**

ICC/IF analysis of HeLa cells using GTX57599 14-3-3 gamma antibody.

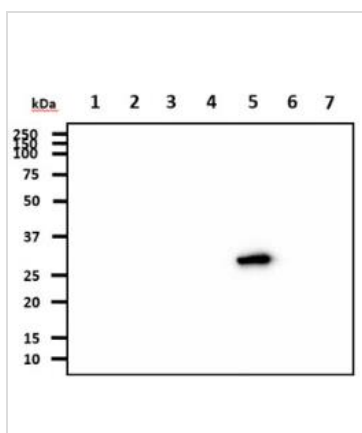
- Blue: DAPI
- Green: Primary antibody
- Dilution: 1:100



**GTX57599 WB Image**

WB analysis of various samples using GTX57599 14-3-3 gamma antibody.

- Samples : HeLa whole whole cell lysate and Mouse brain tissue lysate
- Loading : 40 µg
- Dilution : 1:1000



**GTX57599 WB Image**

WB analysis of various samples using GTX57599 14-3-3 gamma antibody.

- Lane 1 : Recombinant Human YWHAZ protein
- Lane 2 : Recombinant Human YWHAB protein
- Lane 3 : Recombinant Human YWHAE protein
- Lane 4 : Recombinant Human YWHAH protein
- Lane 5 : Recombinant Human YWHAG protein
- Lane 6 : Recombinant Human SFN protein
- Lane 7 : Recombinant Human YWHAQ protein
- Loading : 50 ng
- Dilution : 1:1000



For full product information, images and publications, please visit our [website](#).