



SZABO SCANDIC

Part of Europa Biosite

Produktinformation



Forschungsprodukte & Biochemikalien



Zellkultur & Verbrauchsmaterial



Diagnostik & molekulare Diagnostik



Laborgeräte & Service

Weitere Information auf den folgenden Seiten!
See the following pages for more information!



Lieferung & Zahlungsart

siehe unsere [Liefer- und Versandbedingungen](#)

Zuschläge

- Mindermengenzuschlag
- Trockeneiszuschlag
- Gefahrgutzuschlag
- Expressversand

SZABO-SCANDIC HandelsgmbH

Quellenstraße 110, A-1100 Wien

T. +43(0)1 489 3961-0

F. +43(0)1 489 3961-7

mail@szabo-scandic.com

www.szabo-scandic.com

[linkedin.com/company/szaboscandic](https://www.linkedin.com/company/szaboscandic) 

PKM antibody [AT1B10]

Cat No. GTX57604

Host	Mouse
Clonality	Monoclonal
Isotype	IgG1
Application	WB, ICC/IF
Reactivity	Human

Package
100 µl

APPLICATION

Application Note

*Optimal dilutions/concentrations should be determined by the researcher.

Suggested dilution	Dilution
WB	Recommended starting dilution is 1:1000.
ICC/IF	Recommended starting dilution is 1:250.

Not tested in other applications.

Calculated MW 58 kDa. ([Note](#))

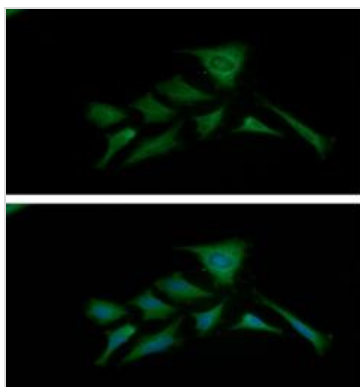
PROPERTIES

Form	Liquid
Buffer	PBS (pH 7.4), 0.02% sodium azide, 10% glycerol
Storage	Store as concentrated solution. Centrifuge briefly prior to opening vial. For short-term storage (1-2 weeks), store at 4°C. For long-term storage, aliquot and store at -20°C or below. Avoid multiple freeze-thaw cycles.
Concentration	1 mg/ml (Please refer to the vial label for the specific concentration.)
Immunogen	The clone AT1B10 is derived from hybridization of mouse F0 myeloma cells with spleen cells from BALB/c mice immunized with a recombinant human PKM4 protein.
Purification	Protein A Purified
Conjugation	Unconjugated
Note	For laboratory use only. Not for any clinical, therapeutic, or diagnostic use in humans or animals. Not for animal or human consumption.



For full product information, images and publications, please visit our [website](#).

DATA IMAGES



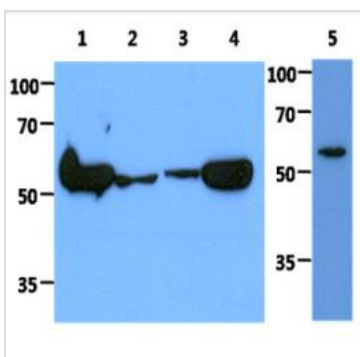
GTX57604 ICC/IF Image

ICC/IF analysis of HeLa cells using GTX57604 PKM antibody.

Blue: DAPI

Green: Primary antibody

Dilution: 1:100



GTX57604 WB Image

WB analysis of various samples using GTX57604 PKM antibody.

Lane 1 : HeLa whole cell lysate

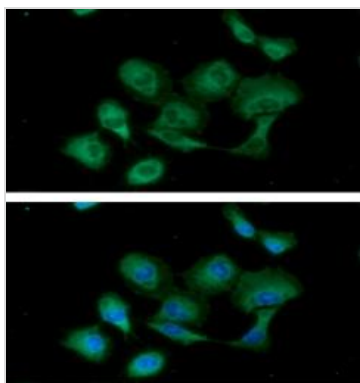
Lane 2 : Jurkat whole cell lysate

Lane 3 : MCF-7 whole cell lysate

Lane 4 : A549 whole cell lysate

Lane 5 : 293T whole cell lysate

Dilution : 1:1000



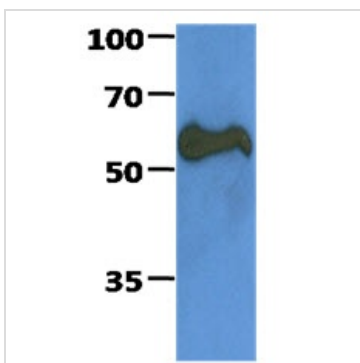
GTX57604 ICC/IF Image

ICC/IF analysis of A549 cells using GTX57604 PKM antibody.

Blue: DAPI

Green: Primary antibody

Dilution: 1:100



GTX57604 WB Image

WB analysis of Recombinant Human PKM2 protein using GTX57604 PKM antibody.

Loading : 50 ng

Dilution : 1:1000



For full product information, images and publications, please visit our [website](#).