



SZABO SCANDIC

Part of Europa Biosite

Produktinformation



Forschungsprodukte & Biochemikalien



Zellkultur & Verbrauchsmaterial



Diagnostik & molekulare Diagnostik



Laborgeräte & Service

Weitere Information auf den folgenden Seiten!
See the following pages for more information!



Lieferung & Zahlungsart

siehe unsere [Liefer- und Versandbedingungen](#)

Zuschläge

- Mindermengenzuschlag
- Trockeneiszuschlag
- Gefahrgutzuschlag
- Expressversand

SZABO-SCANDIC HandelsgmbH

Quellenstraße 110, A-1100 Wien

T. +43(0)1 489 3961-0

F. +43(0)1 489 3961-7

mail@szabo-scandic.com

www.szabo-scandic.com

[linkedin.com/company/szaboscandic](https://www.linkedin.com/company/szaboscandic) 

ACAT2 antibody [AT55D5]

Cat No. GTX57610

Host	Mouse
Clonality	Monoclonal
Isotype	IgG2b
Application	WB, ICC/IF, FACS
Reactivity	Human

Package
100 µl

APPLICATION

Application Note

*Optimal dilutions/concentrations should be determined by the researcher.

Suggested dilution	Dilution
WB	Recommended starting dilution is 1:1000.
ICC/IF	Assay dependent
FACS	Assay dependent

Not tested in other applications.

Calculated MW 41 kDa. ([Note](#))

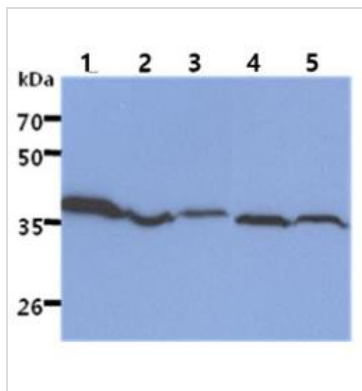
PROPERTIES

Form	Liquid
Buffer	PBS (pH 7.4), 0.02% sodium azide, 10% glycerol
Storage	Store as concentrated solution. Centrifuge briefly prior to opening vial. For short-term storage (1-2 weeks), store at 4°C. For long-term storage, aliquot and store at -20°C or below. Avoid multiple freeze-thaw cycles.
Concentration	1 mg/ml (Please refer to the vial label for the specific concentration.)
Immunogen	The clone AT55D5 is derived from hybridization of mouse F0 myeloma cells with spleen cells from BALB/c mice immunized with a recombinant human ACAT4 protein.
Purification	Protein A Purified
Conjugation	Unconjugated
Note	For laboratory use only. Not for any clinical, therapeutic, or diagnostic use in humans or animals. Not for animal or human consumption.



For full product information, images and publications, please visit our [website](#).

DATA IMAGES



GTX57610 WB Image

WB analysis of various samples using GTX57610 ACAT2 antibody.

Lane 1 : HepG2 whole cell lysate

Lane 2 : Ramos whole cell lysate

Lane 3 : MCF-7 whole cell lysate

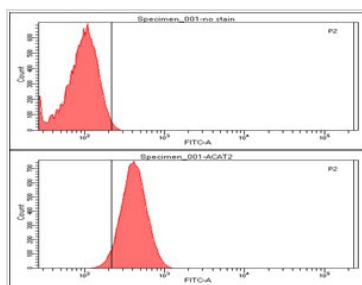
Lane 4 : 293T whole cell lysate

Lane 5 : HL-60 whole cell lysate

Lane 6 : SW480 whole cell lysate

Loading : 40 µg

Dilution : 1:1000



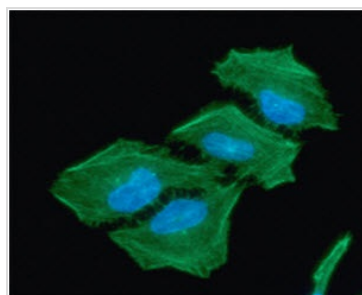
GTX57610 FACS Image

FACS analysis of PC-3 cells using GTX57610 ACAT2 antibody.

Cell Number: 1 x 10⁶ cells

Upper panel : negative control, Lower panel: Primary antibody

Antibody amount: 2-5 µg



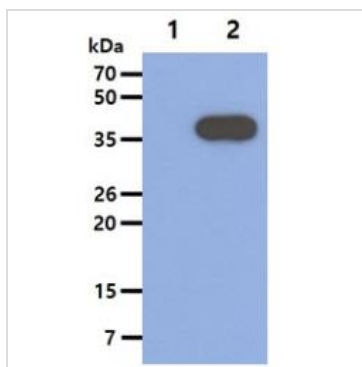
GTX57610 ICC/IF Image

ICC/IF analysis of HeLa cells using GTX57610 ACAT2 antibody.

Blue: DAPI

Green: Primary antibody

Dilution: 1:100



GTX57610 WB Image

WB analysis of various samples using GTX57610 ACAT2 antibody.

Lane 1 : 293T cell lysate

Lane 2 : ACAT2 transfected 293T cell lysate

Loading : 5 µg

Dilution : 1:1000



For full product information, images and publications, please visit our [website](#).