



SZABO SCANDIC

Part of Europa Biosite

Produktinformation



Forschungsprodukte & Biochemikalien



Zellkultur & Verbrauchsmaterial



Diagnostik & molekulare Diagnostik



Laborgeräte & Service

Weitere Information auf den folgenden Seiten!
See the following pages for more information!



Lieferung & Zahlungsart

siehe unsere [Liefer- und Versandbedingungen](#)

Zuschläge

- Mindermengenzuschlag
- Trockeneiszuschlag
- Gefahrgutzuschlag
- Expressversand

SZABO-SCANDIC HandelsgmbH

Quellenstraße 110, A-1100 Wien

T. +43(0)1 489 3961-0

F. +43(0)1 489 3961-7

mail@szabo-scandic.com

www.szabo-scandic.com

[linkedin.com/company/szaboscandic](https://www.linkedin.com/company/szaboscandic) 

GOT2 antibody [AT8B11]

Cat No. GTX57618

Host	Mouse
Clonality	Monoclonal
Isotype	IgG3
Application	WB, ICC/IF, FACS
Reactivity	Human, Mouse

Package
100 µl

APPLICATION

Application Note

*Optimal dilutions/concentrations should be determined by the researcher.

Suggested dilution	Dilution
WB	Recommended starting dilution is 1:1000.
ICC/IF	Recommended starting dilution is 1:100.
FACS	Assay dependent

Not tested in other applications.

Calculated MW	48 kDa. (Note)
Specificity/Sensitivity	Based on internal testing result, this antibody does not cross react with human GOT1.

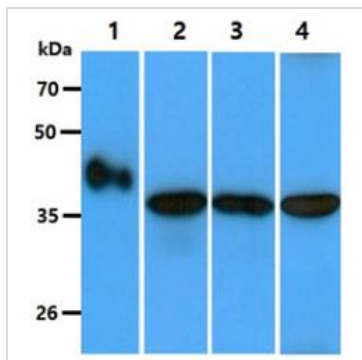
PROPERTIES

Form	Liquid
Buffer	PBS (pH 7.4), 0.02% sodium azide, 10% glycerol
Storage	Store as concentrated solution. Centrifuge briefly prior to opening vial. For short-term storage (1-2 weeks), store at 4°C. For long-term storage, aliquot and store at -20°C or below. Avoid multiple freeze-thaw cycles.
Concentration	1 mg/ml (Please refer to the vial label for the specific concentration.)
Immunogen	The clone AT8B11 is derived from hybridization of mouse F0 myeloma cells with spleen cells from BALB/c mice immunized with a recombinant human GOT4 protein.
Purification	Protein A Purified
Conjugation	Unconjugated
Note	For laboratory use only. Not for any clinical, therapeutic, or diagnostic use in humans or animals. Not for animal or human consumption.



For full product information, images and publications, please visit our [website](#).

DATA IMAGES

**GTX57618 WB Image**

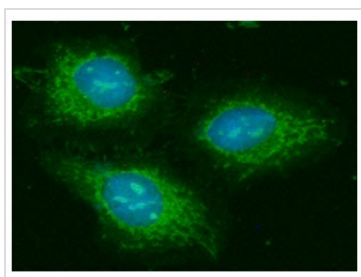
WB analysis of various samples using GTX57618 GOT2 antibody.

Lane 1 : Recombinant Human GOT2 protein (50 ng)

Lane 2 : Ramos whole cell lysate (40 μ g)

Lane 3 : 293T whole cell lysate (40 μ g)

Lane 4 : Liver tissue lysate (40 μ g)

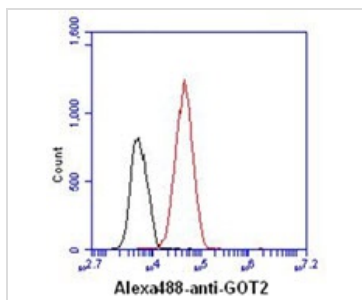
**GTX57618 ICC/IF Image**

ICC/IF analysis of HeLa cells using GTX57618 GOT2 antibody.

Blue: DAPI

Green: Primary antibody

Dilution: 1:100

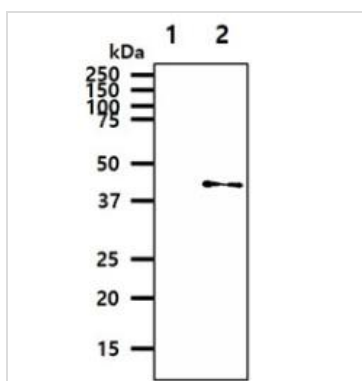
**GTX57618 FACS Image**

FACS analysis of HepG2 cells using GTX57618 GOT2 antibody.

Cell Number: 1×10^6 cells

Primary antibody: Red line

Antibody amount: 2-5 μ g

**GTX57618 WB Image**

WB analysis of various samples using GTX57618 GOT2 antibody.

Lane 1 : Recombinant Human GOT1 protein

Lane 2 : Recombinant Human GOT2 protein

Loading : 20 ng

Dilution : 1:1000



For full product information, images and publications, please visit our [website](#).