



SZABO SCANDIC

Part of Europa Biosite

Produktinformation



Forschungsprodukte & Biochemikalien



Zellkultur & Verbrauchsmaterial



Diagnostik & molekulare Diagnostik



Laborgeräte & Service

Weitere Information auf den folgenden Seiten!
See the following pages for more information!



Lieferung & Zahlungsart

siehe unsere [Liefer- und Versandbedingungen](#)

Zuschläge

- Mindermengenzuschlag
- Trockeneiszuschlag
- Gefahrgutzuschlag
- Expressversand

SZABO-SCANDIC HandelsgmbH

Quellenstraße 110, A-1100 Wien

T. +43(0)1 489 3961-0

F. +43(0)1 489 3961-7

mail@szabo-scandic.com

www.szabo-scandic.com

[linkedin.com/company/szaboscandic](https://www.linkedin.com/company/szaboscandic) 

Peroxiredoxin 6 antibody [AT22E7]

Cat No. GTX57622

Host	Mouse
Clonality	Monoclonal
Isotype	IgG2a
Application	WB, ICC/IF, FACS
Reactivity	Human

Package
100 µl

APPLICATION

Application Note

*Optimal dilutions/concentrations should be determined by the researcher.

Suggested dilution	Dilution
WB	Assay dependent
ICC/IF	Assay dependent
FACS	Assay dependent

Not tested in other applications.

Calculated MW 25 kDa. ([Note](#))

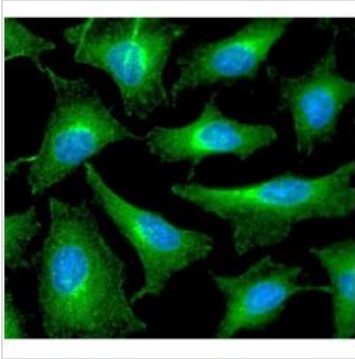
PROPERTIES

Form	Liquid
Buffer	PBS (pH 7.4), 0.02% sodium azide, 10% glycerol
Storage	Store as concentrated solution. Centrifuge briefly prior to opening vial. For short-term storage (1-2 weeks), store at 4°C. For long-term storage, aliquot and store at -20°C or below. Avoid multiple freeze-thaw cycles.
Concentration	1 mg/ml (Please refer to the vial label for the specific concentration.)
Immunogen	The clone AT22E7 is derived from hybridization of mouse F0 myeloma cells with spleen cells from BALB/c mice immunized with a recombinant human PRDX8 protein.
Purification	Protein A Purified
Conjugation	Unconjugated
Note	For laboratory use only. Not for any clinical, therapeutic, or diagnostic use in humans or animals. Not for animal or human consumption.



For full product information, images and publications, please visit our [website](#).

DATA IMAGES

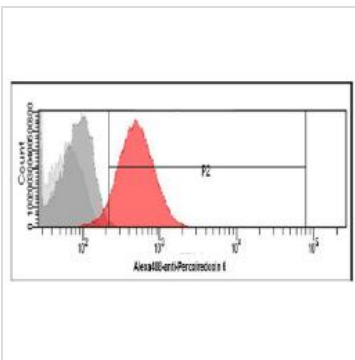
**GTX57622 ICC/IF Image**

ICC/IF analysis of HeLa cells using GTX57622 Peroxiredoxin 6 antibody.

Blue: DAPI

Green: Primary antibody

Dilution: 1:100

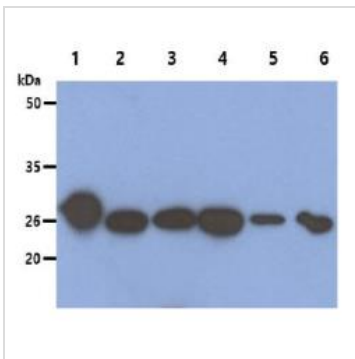
**GTX57622 FACS Image**

FACS analysis of HeLa cells using GTX57622 Peroxiredoxin 6 antibody.

Cell Number: 1 x 10⁶ cells

Red: Primary antibody

Antibody amount: 2-5 μg

**GTX57622 WB Image**

WB analysis of various samples using GTX57622 Peroxiredoxin 6 antibody.

Lane 1 : Recombinant Human PRDX6 protein (50 ng)

Lane 2 : HeLa whole cell lysate (40 μg)

Lane 3 : 293T whole cell lysate (40 μg)

Lane 4 : HepG2 whole cell lysate (40 μg)

Lane 5 : U87-MG whole cell lysate (40 μg)

Lane 6 : Ramos whole cell lysate (40 μg)



For full product information, images and publications, please visit our [website](#).