



SZABO SCANDIC

Part of Europa Biosite

Produktinformation



Forschungsprodukte & Biochemikalien



Zellkultur & Verbrauchsmaterial



Diagnostik & molekulare Diagnostik



Laborgeräte & Service

Weitere Information auf den folgenden Seiten!
See the following pages for more information!



Lieferung & Zahlungsart

siehe unsere [Liefer- und Versandbedingungen](#)

Zuschläge

- Mindermengenzuschlag
- Trockeneiszuschlag
- Gefahrgutzuschlag
- Expressversand

SZABO-SCANDIC HandelsgmbH

Quellenstraße 110, A-1100 Wien

T. +43(0)1 489 3961-0

F. +43(0)1 489 3961-7

mail@szabo-scandic.com

www.szabo-scandic.com

[linkedin.com/company/szaboscandic](https://www.linkedin.com/company/szaboscandic) 

Peroxiredoxin 5 antibody [AT6A10]

Cat No. GTX57635

| | |
|--------------------|------------------|
| Host | Mouse |
| Clonality | Monoclonal |
| Isotype | IgG1 |
| Application | WB, ICC/IF, FACS |
| Reactivity | Human |

Package
100 µl

APPLICATION

Application Note

*Optimal dilutions/concentrations should be determined by the researcher.

| Suggested dilution | Dilution |
|--------------------|-----------------|
| WB | Assay dependent |
| ICC/IF | Assay dependent |
| FACS | Assay dependent |

Not tested in other applications.

Calculated MW 22 kDa. ([Note](#))

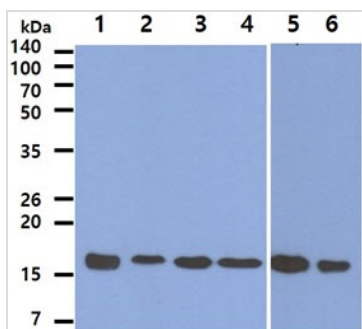
PROPERTIES

| | |
|----------------------|--|
| Form | Liquid |
| Buffer | PBS (pH 7.4), 0.02% sodium azide, 10% glycerol |
| Storage | Store as concentrated solution. Centrifuge briefly prior to opening vial. For short-term storage (1-2 weeks), store at 4°C. For long-term storage, aliquot and store at -20°C or below. Avoid multiple freeze-thaw cycles. |
| Concentration | 1 mg/ml (Please refer to the vial label for the specific concentration.) |
| Immunogen | The clone AT6A10 is derived from hybridization of mouse F0 myeloma cells with spleen cells from BALB/c mice immunized with a recombinant human PRDX7 protein. |
| Purification | Protein A Purified |
| Conjugation | Unconjugated |
| Note | For laboratory use only. Not for any clinical, therapeutic, or diagnostic use in humans or animals. Not for animal or human consumption. |



For full product information, images and publications, please visit our [website](#).

DATA IMAGES

**GTX57635 WB Image**

WB analysis of various samples using GTX57635 Peroxiredoxin 5 antibody.

Lane 1 : Recombinant Human PRDX5 protein (50 ng)

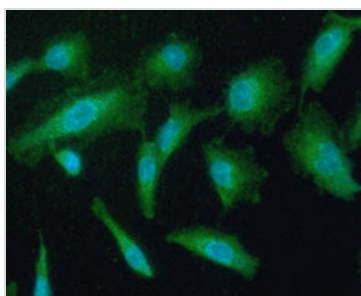
Lane 2 : MCF-7 whole cell lysate (40 µg)

Lane 3 : A549 whole cell lysate (40 µg)

Lane 4 : HeLa whole cell lysate (40 µg)

Lane 5 : 293T whole cell lysate (40 µg)

Lane 6 : Jurkat whole cell lysate (40 µg)

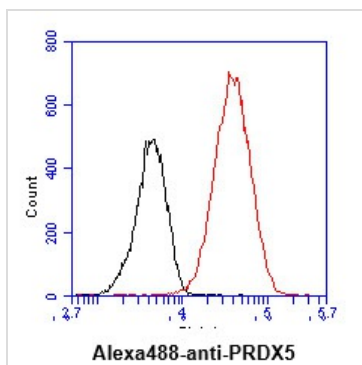
**GTX57635 ICC/IF Image**

ICC/IF analysis of A549 cells using GTX57635 Peroxiredoxin 5 antibody.

Blue: DAPI

Green: Primary antibody

Dilution: 1:100

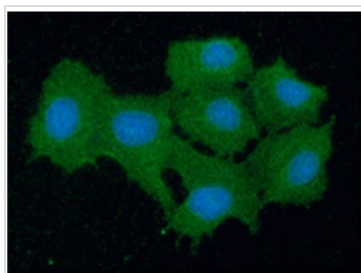
**GTX57635 FACS Image**

FACS analysis of HeLa cells using GTX57635 Peroxiredoxin 5 antibody.

Cell Number: 1×10^6 cells

Primary antibody: Red line

Antibody amount: 2-5 µg

**GTX57635 ICC/IF Image**

ICC/IF analysis of Hep3B cells using GTX57635 Peroxiredoxin 5 antibody.

Blue: DAPI

Green: Primary antibody

Dilution: 1:100



For full product information, images and publications, please visit our [website](#).