



# SZABO SCANDIC

Part of Europa Biosite

## Produktinformation



Forschungsprodukte & Biochemikalien



Zellkultur & Verbrauchsmaterial



Diagnostik & molekulare Diagnostik



Laborgeräte & Service

Weitere Information auf den folgenden Seiten!  
See the following pages for more information!



### Lieferung & Zahlungsart

siehe unsere [Liefer- und Versandbedingungen](#)

### Zuschläge

- Mindermengenzuschlag
- Trockeneiszuschlag
- Gefahrgutzuschlag
- Expressversand

### SZABO-SCANDIC HandelsgmbH

Quellenstraße 110, A-1100 Wien

T. +43(0)1 489 3961-0

F. +43(0)1 489 3961-7

[mail@szabo-scandic.com](mailto:mail@szabo-scandic.com)

[www.szabo-scandic.com](http://www.szabo-scandic.com)

[linkedin.com/company/szaboscandic](https://www.linkedin.com/company/szaboscandic) 

## SOD1 antibody [AT6F1]

**Cat No. GTX57658**

<b>Host</b>	Mouse
<b>Clonality</b>	Monoclonal
<b>Isotype</b>	IgG1
<b>Application</b>	WB, ICC/IF, FACS
<b>Reactivity</b>	Human

**Package**  
100 µl

## APPLICATION

**Application Note**

\*Optimal dilutions/concentrations should be determined by the researcher.

Suggested dilution	Dilution
WB	Assay dependent
ICC/IF	Assay dependent
FACS	Assay dependent

Not tested in other applications.

**Calculated MW** 16 kDa. ([Note](#))

**Specificity/Sensitivity** Based on internal testing result, this antibody does not cross react with human SOD2.

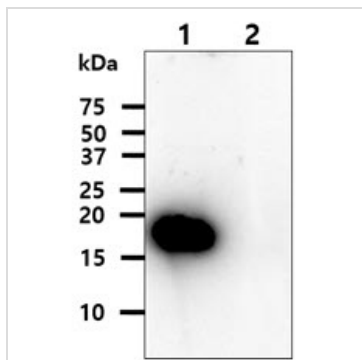
## PROPERTIES

<b>Form</b>	Liquid
<b>Buffer</b>	PBS (pH 7.4), 0.02% sodium azide, 10% glycerol
<b>Storage</b>	Store as concentrated solution. Centrifuge briefly prior to opening vial. For short-term storage (1-2 weeks), store at 4°C. For long-term storage, aliquot and store at -20°C or below. Avoid multiple freeze-thaw cycles.
<b>Concentration</b>	1 mg/ml (Please refer to the vial label for the specific concentration.)
<b>Immunogen</b>	The clone AT6F1 is derived from hybridization of mouse F0 myeloma cells with spleen cells from BALB/c mice immunized with a recombinant human SOD3 protein.
<b>Purification</b>	Protein A Purified
<b>Conjugation</b>	Unconjugated
<b>Note</b>	For laboratory use only. Not for any clinical, therapeutic, or diagnostic use in humans or animals. Not for animal or human consumption.



For full product information, images and publications, please visit our [website](#).

DATA IMAGES



**GTX57658 WB Image**

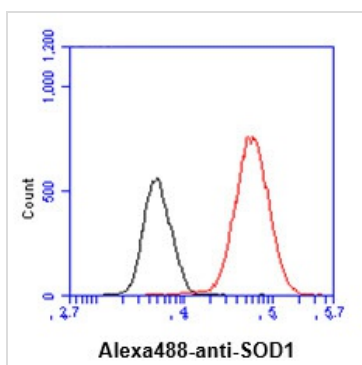
WB analysis of various samples using GTX57658 SOD1 antibody.

Lane 1 : Recombinant Human SOD1 protein

Lane 2 : Recombinant Human SOD2 protein

Loading : 20 ng

Dilution : 1:1000



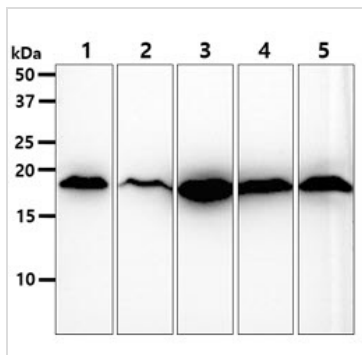
**GTX57658 FACS Image**

FACS analysis of Hep3B cells using GTX57658 SOD1 antibody.

Cell Number: 1 x 10<sup>6</sup> cells

Primary antibody: Red line

Antibody amount: 2-5 µg



**GTX57658 WB Image**

WB analysis of various samples using GTX57658 SOD1 antibody.

Lane 1 : A549 whole cell lysate

Lane 2 : A431 whole cell lysate

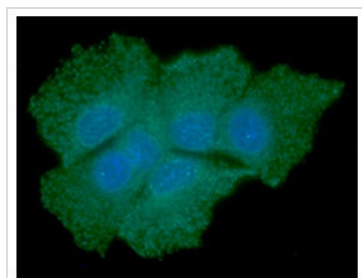
Lane 3 : 293T whole cell lysate

Lane 4 : PC-3 whole cell lysate

Lane 5 : U87-MG whole cell lysate

Loading : 40 µg

Dilution : 1:1000



**GTX57658 ICC/IF Image**

ICC/IF analysis of Hep3B cells using GTX57658 SOD1 antibody.

Blue: DAPI

Green: Primary antibody

Dilution: 1:100



For full product information, images and publications, please visit our [website](#).