



# SZABO SCANDIC

Part of Europa Biosite

## Produktinformation



Forschungsprodukte & Biochemikalien



Zellkultur & Verbrauchsmaterial



Diagnostik & molekulare Diagnostik



Laborgeräte & Service

Weitere Information auf den folgenden Seiten!  
See the following pages for more information!



### Lieferung & Zahlungsart

siehe unsere [Liefer- und Versandbedingungen](#)

### Zuschläge

- Mindermengenzuschlag
- Trockeneiszuschlag
- Gefahrgutzuschlag
- Expressversand

### SZABO-SCANDIC HandelsgmbH

Quellenstraße 110, A-1100 Wien

T. +43(0)1 489 3961-0

F. +43(0)1 489 3961-7

[mail@szabo-scandic.com](mailto:mail@szabo-scandic.com)

[www.szabo-scandic.com](http://www.szabo-scandic.com)

[linkedin.com/company/szaboscandic](https://www.linkedin.com/company/szaboscandic) 

## PGM1 antibody [AT84G2]

**Cat No. GTX57659**

<b>Host</b>	Mouse
<b>Clonality</b>	Monoclonal
<b>Isotype</b>	IgG1
<b>Application</b>	WB, ICC/IF
<b>Reactivity</b>	Human, Mouse

**Package**  
100 µl

## APPLICATION

**Application Note**

\*Optimal dilutions/concentrations should be determined by the researcher.

Suggested dilution	Dilution
WB	Assay dependent
ICC/IF	Assay dependent

Not tested in other applications.

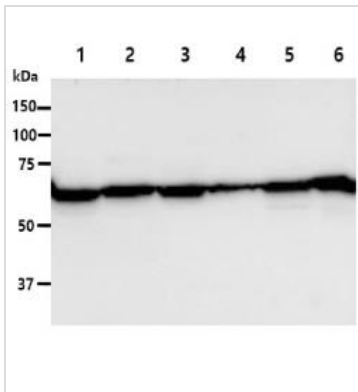
**Calculated MW** 61 kDa. ([Note](#))

## PROPERTIES

<b>Form</b>	Liquid
<b>Buffer</b>	PBS (pH 7.4), 0.02% sodium azide, 10% glycerol
<b>Storage</b>	Store as concentrated solution. Centrifuge briefly prior to opening vial. For short-term storage (1-2 weeks), store at 4°C. For long-term storage, aliquot and store at -20°C or below. Avoid multiple freeze-thaw cycles.
<b>Concentration</b>	1 mg/ml (Please refer to the vial label for the specific concentration.)
<b>Immunogen</b>	The clone AT84G2 is derived from hybridization of mouse F0 myeloma cells with spleen cells from BALB/c mice immunized with a recombinant human PGM3 protein.
<b>Purification</b>	Protein A Purified
<b>Conjugation</b>	Unconjugated
<b>Note</b>	For laboratory use only. Not for any clinical, therapeutic, or diagnostic use in humans or animals. Not for animal or human consumption.



For full product information, images and publications, please visit our [website](#).

**DATA IMAGES**

**GTX57659 WB Image**

WB analysis of various samples using GTX57659 PGM1 antibody.

Lane 1 : 293T whole cell lysate

Lane 2 : HepG2 whole cell lysate

Lane 3 : NIH-3T3 whole cell lysate

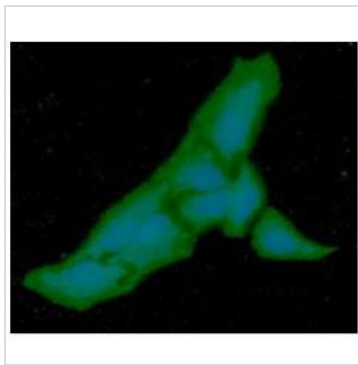
Lane 4 : Jurkat whole cell lysate

Lane 5 : HeLa whole cell lysate

Lane 6 : U87-MG whole cell lysate

Loading : 40 µg

Dilution : 1:1000


**GTX57659 ICC/IF Image**

ICC/IF analysis of HeLa cells using GTX57659 PGM1 antibody.

Blue: DAPI

Green: Primary antibody

Dilution: 1:100



For full product information, images and publications, please visit our [website](#).