



# SZABO SCANDIC

Part of Europa Biosite

## Produktinformation



Forschungsprodukte & Biochemikalien



Zellkultur & Verbrauchsmaterial



Diagnostik & molekulare Diagnostik



Laborgeräte & Service

Weitere Information auf den folgenden Seiten!  
See the following pages for more information!



### Lieferung & Zahlungsart

siehe unsere [Liefer- und Versandbedingungen](#)

### Zuschläge

- Mindermengenzuschlag
- Trockeneiszuschlag
- Gefahrgutzuschlag
- Expressversand

### SZABO-SCANDIC HandelsgmbH

Quellenstraße 110, A-1100 Wien

T. +43(0)1 489 3961-0

F. +43(0)1 489 3961-7

[mail@szabo-scandic.com](mailto:mail@szabo-scandic.com)

[www.szabo-scandic.com](http://www.szabo-scandic.com)

[linkedin.com/company/szaboscandic](https://www.linkedin.com/company/szaboscandic) 

## IDH1 antibody [AT25H10]

**Cat No. GTX57662**

<b>Host</b>	Mouse
<b>Clonality</b>	Monoclonal
<b>Isotype</b>	IgG2a
<b>Application</b>	WB, ICC/IF
<b>Reactivity</b>	Human, Mouse

**Package**  
100 µl

## APPLICATION

**Application Note**

\*Optimal dilutions/concentrations should be determined by the researcher.

Suggested dilution	Dilution
WB	Assay dependent
ICC/IF	Assay dependent

Not tested in other applications.

**Calculated MW** 47 kDa. ([Note](#))

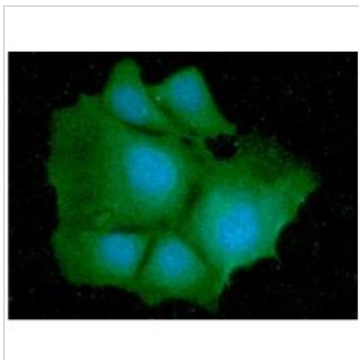
## PROPERTIES

<b>Form</b>	Liquid
<b>Buffer</b>	PBS (pH 7.4), 0.02% sodium azide, 10% glycerol
<b>Storage</b>	Store as concentrated solution. Centrifuge briefly prior to opening vial. For short-term storage (1-2 weeks), store at 4°C. For long-term storage, aliquot and store at -20°C or below. Avoid multiple freeze-thaw cycles.
<b>Concentration</b>	1 mg/ml (Please refer to the vial label for the specific concentration.)
<b>Immunogen</b>	The clone AT25H10 is derived from hybridization of mouse F0 myeloma cells with spleen cells from BALB/c mice immunized with a recombinant human IDH3 protein.
<b>Purification</b>	Protein A Purified
<b>Conjugation</b>	Unconjugated
<b>Note</b>	For laboratory use only. Not for any clinical, therapeutic, or diagnostic use in humans or animals. Not for animal or human consumption.



For full product information, images and publications, please visit our [website](#).

## DATA IMAGES

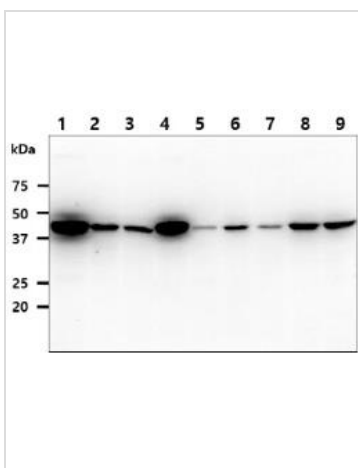
**GTX57662 ICC/IF Image**

ICC/IF analysis of Hep3B cells using GTX57662 IDH1 antibody.

Blue: DAPI

Green: Primary antibody

Dilution: 1:100

**GTX57662 WB Image**

WB analysis of various samples using GTX57662 IDH1 antibody.

Lane 1 : HepG2 whole cell lysate

Lane 2 : A549 whole cell lysate

Lane 3 : HeLa whole cell lysate

Lane 4 : NIH-3T3 whole cell lysate

Lane 5 : Jurkat whole cell lysate

Lane 6 : K562 whole cell lysate

Lane 7 : 293T whole cell lysate

Lane 8 : MCF-7 whole cell lysate

Lane 9 : LNCap whole cell lysate

Dilution : 1:1000



For full product information, images and publications, please visit our [website](#).