



SZABO SCANDIC

Part of Europa Biosite

Produktinformation



Forschungsprodukte & Biochemikalien



Zellkultur & Verbrauchsmaterial



Diagnostik & molekulare Diagnostik



Laborgeräte & Service

Weitere Information auf den folgenden Seiten!
See the following pages for more information!



Lieferung & Zahlungsart

siehe unsere [Liefer- und Versandbedingungen](#)

Zuschläge

- Mindermengenzuschlag
- Trockeneiszuschlag
- Gefahrgutzuschlag
- Expressversand

SZABO-SCANDIC HandelsgmbH

Quellenstraße 110, A-1100 Wien

T. +43(0)1 489 3961-0

F. +43(0)1 489 3961-7

mail@szabo-scandic.com

www.szabo-scandic.com

[linkedin.com/company/szaboscandic](https://www.linkedin.com/company/szaboscandic) 

EBP1 antibody [AT5E7]

Cat No. GTX57679

Host	Mouse
Clonality	Monoclonal
Isotype	IgG1
Application	WB, ICC/IF, FACS
Reactivity	Human

Package
100 µl

APPLICATION

Application Note

*Optimal dilutions/concentrations should be determined by the researcher.

Suggested dilution	Dilution
WB	Assay dependent
ICC/IF	Assay dependent
FACS	Assay dependent

Not tested in other applications.

Calculated MW 44 kDa. ([Note](#))

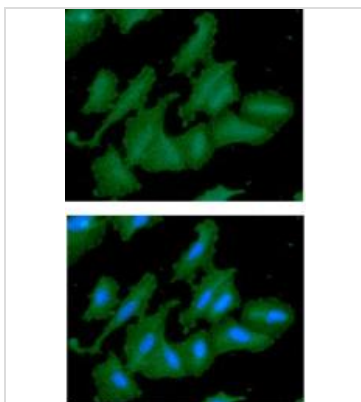
PROPERTIES

Form	Liquid
Buffer	PBS (pH 7.4), 0.02% sodium azide, 10% glycerol
Storage	Store as concentrated solution. Centrifuge briefly prior to opening vial. For short-term storage (1-2 weeks), store at 4°C. For long-term storage, aliquot and store at -20°C or below. Avoid multiple freeze-thaw cycles.
Concentration	1 mg/ml (Please refer to the vial label for the specific concentration.)
Immunogen	The clone AT5E7 is derived from hybridization of mouse F0 myeloma cells with spleen cells from BALB/c mice immunized with a recombinant human PA2G6 protein.
Purification	Protein A Purified
Conjugation	Unconjugated
Note	For laboratory use only. Not for any clinical, therapeutic, or diagnostic use in humans or animals. Not for animal or human consumption.



For full product information, images and publications, please visit our [website](#).

DATA IMAGES

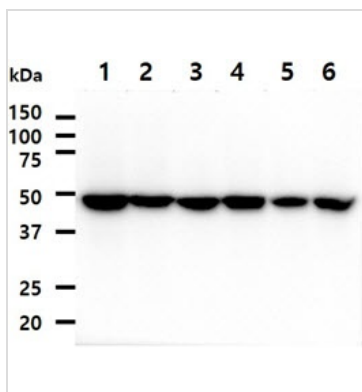
**GTX57679 ICC/IF Image**

ICC/IF analysis of HeLa cells using GTX57679 EBP1 antibody.

Blue: DAPI

Green: Primary antibody

Dilution: 1:100

**GTX57679 WB Image**

WB analysis of various samples using GTX57679 EBP1 antibody.

Lane 1 : HeLa whole cell lysate

Lane 2 : MCF-7 whole cell lysate

Lane 3 : A549 whole cell lysate

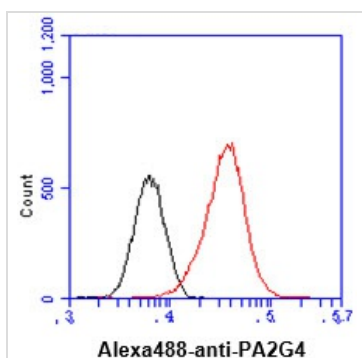
Lane 4 : 293T whole cell lysate

Lane 5 : A431 whole cell lysate

Lane 6 : Jurkat whole cell lysate

Loading : 40 µg

Dilution : 1:1000

**GTX57679 FACS Image**

FACS analysis of HeLa cells using GTX57679 EBP1 antibody.

Cell Number: 1 x 10⁶ cells

Primary antibody: Red line

Antibody amount: 2-5 µg



For full product information, images and publications, please visit our [website](#).