



SZABO SCANDIC

Part of Europa Biosite

Produktinformation



Forschungsprodukte & Biochemikalien



Zellkultur & Verbrauchsmaterial



Diagnostik & molekulare Diagnostik



Laborgeräte & Service

Weitere Information auf den folgenden Seiten!
See the following pages for more information!



Lieferung & Zahlungsart

siehe unsere [Liefer- und Versandbedingungen](#)

Zuschläge

- Mindermengenzuschlag
- Trockeneiszuschlag
- Gefahrgutzuschlag
- Expressversand

SZABO-SCANDIC HandelsgmbH

Quellenstraße 110, A-1100 Wien

T. +43(0)1 489 3961-0

F. +43(0)1 489 3961-7

mail@szabo-scandic.com

www.szabo-scandic.com

[linkedin.com/company/szaboscandic](https://www.linkedin.com/company/szaboscandic) 

PGC1 alpha antibody [AT25C8]

Cat No. GTX57707

| | |
|--------------------|------------------|
| Host | Mouse |
| Clonality | Monoclonal |
| Isotype | IgG2a |
| Application | WB, ICC/IF, FACS |
| Reactivity | Human, Mouse |

Package
100 µl

APPLICATION

Application Note

*Optimal dilutions/concentrations should be determined by the researcher.

| Suggested dilution | Dilution |
|--------------------|-----------------|
| WB | Assay dependent |
| ICC/IF | Assay dependent |
| FACS | Assay dependent |

Not tested in other applications.

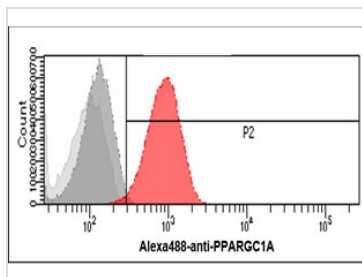
Calculated MW 91 kDa. ([Note](#))

PROPERTIES

| | |
|----------------------|--|
| Form | Liquid |
| Buffer | PBS (pH 7.4), 0.02% sodium azide, 10% glycerol |
| Storage | Store as concentrated solution. Centrifuge briefly prior to opening vial. For short-term storage (1-2 weeks), store at 4°C. For long-term storage, aliquot and store at -20°C or below. Avoid multiple freeze-thaw cycles. |
| Concentration | 1 mg/ml (Please refer to the vial label for the specific concentration.) |
| Immunogen | The clone AT25C8 is derived from hybridization of mouse F0 myeloma cells with spleen cells from BALB/c mice immunized with a recombinant human PPARGC3A protein. |
| Purification | Protein A Purified |
| Conjugation | Unconjugated |
| Note | For laboratory use only. Not for any clinical, therapeutic, or diagnostic use in humans or animals. Not for animal or human consumption. |



For full product information, images and publications, please visit our [website](#).

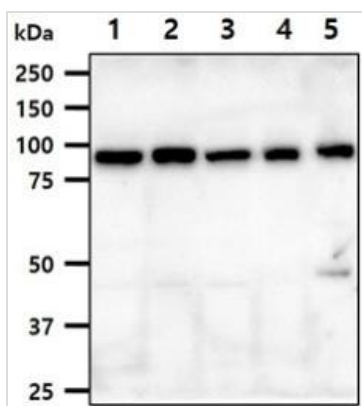
DATA IMAGES

GTX57707 FACS Image

FACS analysis of HeLa cells using GTX57707 PGC1 alpha antibody.

Cell Number: 1 x 10⁶ cells

Red: Primary antibody

Antibody amount: 2-5 µg


GTX57707 WB Image

WB analysis of various samples using GTX57707 PGC1 alpha antibody.

Lane 1 : HeLa whole cell lysate

Lane 2 : MCF-7 whole cell lysate

Lane 3 : HepG2 whole cell lysate

Lane 4 : 293T whole cell lysate

Lane 5 : Mouse brain tissue lysate

Loading : 40 µg

Dilution : 1:1000



For full product information, images and publications, please visit our [website](#).