



# SZABO SCANDIC

Part of Europa Biosite

## Produktinformation



Forschungsprodukte & Biochemikalien



Zellkultur & Verbrauchsmaterial



Diagnostik & molekulare Diagnostik



Laborgeräte & Service

Weitere Information auf den folgenden Seiten!  
See the following pages for more information!



### Lieferung & Zahlungsart

siehe unsere [Liefer- und Versandbedingungen](#)

### Zuschläge

- Mindermengenzuschlag
- Trockeneiszuschlag
- Gefahrgutzuschlag
- Expressversand

### SZABO-SCANDIC HandelsgmbH

Quellenstraße 110, A-1100 Wien

T. +43(0)1 489 3961-0

F. +43(0)1 489 3961-7

[mail@szabo-scandic.com](mailto:mail@szabo-scandic.com)

[www.szabo-scandic.com](http://www.szabo-scandic.com)

[linkedin.com/company/szaboscandic](https://www.linkedin.com/company/szaboscandic) 

## AKT1 + AKT3 antibody [AT6D5]

**Cat No. GTX57714**

<b>Host</b>	Mouse
<b>Clonality</b>	Monoclonal
<b>Isotype</b>	IgG2a
<b>Application</b>	WB, ICC/IF, FACS
<b>Reactivity</b>	Human, Mouse

**Package**  
100 µl

## APPLICATION

**Application Note**

\*Optimal dilutions/concentrations should be determined by the researcher.

Suggested dilution	Dilution
WB	Assay dependent
ICC/IF	Assay dependent
FACS	Assay dependent

Not tested in other applications.

**Specificity/Sensitivity** Based on internal testing result, this antibody does not cross react with human AKT2.

## PROPERTIES

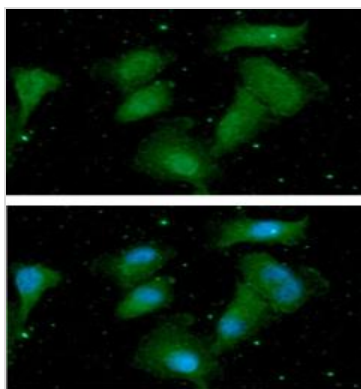
<b>Form</b>	Liquid
<b>Buffer</b>	PBS (pH 7.4), 0.02% sodium azide, 10% glycerol
<b>Storage</b>	Store as concentrated solution. Centrifuge briefly prior to opening vial. For short-term storage (1-2 weeks), store at 4°C. For long-term storage, aliquot and store at -20°C or below. Avoid multiple freeze-thaw cycles.
<b>Concentration</b>	1 mg/ml (Please refer to the vial label for the specific concentration.)
<b>Immunogen</b>	The clone AT6D5 is derived from hybridization of mouse F0 myeloma cells with spleen cells from BALB/c mice immunized with a recombinant human AKT3 protein.
<b>Purification</b>	Protein A Purified
<b>Conjugation</b>	Unconjugated
<b>Note</b>	For laboratory use only. Not for any clinical, therapeutic, or diagnostic use in humans or animals. Not for animal or human consumption.



For full product information, images and publications, please visit our [website](#).

Date 2020 / 07 / 27 Page 1 of 2

DATA IMAGES



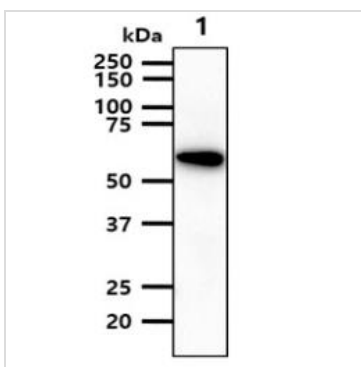
**GTX57714 ICC/IF Image**

ICC/IF analysis of A549 cells using GTX57714 AKT1 + AKT3 antibody [AT6D5].

Blue: DAPI

Green: Primary antibody

Dilution: 1:100

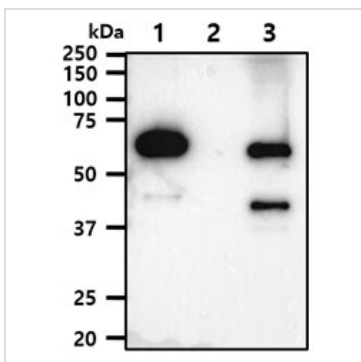


**GTX57714 WB Image**

WB analysis of NIH3T3 whole cell lysate using GTX57714 AKT1 + AKT3 antibody [AT6D5].

Loading : 40 µg

Dilution : 1:1000



**GTX57714 WB Image**

WB analysis of various samples using GTX57714 AKT1 + AKT3 antibody [AT6D5].

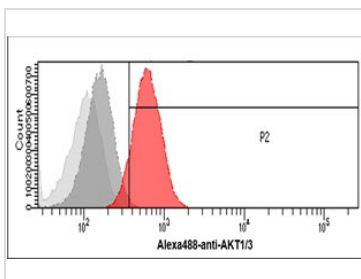
Lane 1 : Recombinant Human AKT1 protein

Lane 2 : Recombinant Human AKT2 protein

Lane 3 : Recombinant Human AKT3 protein

Loading : 50 ng

Dilution : 1:1000



**GTX57714 FACS Image**

FACS analysis of A549 cells using GTX57714 AKT1 + AKT3 antibody [AT6D5].

Cell Number: 1 x 10<sup>6</sup> cells

Red: Primary antibody

Antibody amount: 2-5 µg



For full product information, images and publications, please visit our [website](#).