



SZABO SCANDIC

Part of Europa Biosite

Produktinformation



Forschungsprodukte & Biochemikalien



Zellkultur & Verbrauchsmaterial



Diagnostik & molekulare Diagnostik



Laborgeräte & Service

Weitere Information auf den folgenden Seiten!
See the following pages for more information!



Lieferung & Zahlungsart

siehe unsere [Liefer- und Versandbedingungen](#)

Zuschläge

- Mindermengenzuschlag
- Trockeneiszuschlag
- Gefahrgutzuschlag
- Expressversand

SZABO-SCANDIC HandelsgmbH

Quellenstraße 110, A-1100 Wien

T. +43(0)1 489 3961-0

F. +43(0)1 489 3961-7

mail@szabo-scandic.com

www.szabo-scandic.com

[linkedin.com/company/szaboscandic](https://www.linkedin.com/company/szaboscandic)

TOMM20 antibody [AT1B2]

Cat No. GTX57716

Host	Mouse
Clonality	Monoclonal
Isotype	IgG1
Application	WB, ICC/IF, FACS
Reactivity	Human

Package
100 µl

APPLICATION

Application Note

*Optimal dilutions/concentrations should be determined by the researcher.

Suggested dilution	Dilution
WB	Assay dependent
ICC/IF	Assay dependent
FACS	Assay dependent

Not tested in other applications.

Calculated MW 16 kDa. ([Note](#))

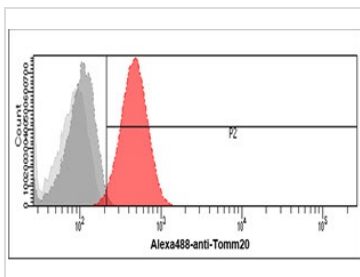
PROPERTIES

Form	Liquid
Buffer	PBS (pH 7.4), 0.02% sodium azide, 10% glycerol
Storage	Store as concentrated solution. Centrifuge briefly prior to opening vial. For short-term storage (1-2 weeks), store at 4°C. For long-term storage, aliquot and store at -20°C or below. Avoid multiple freeze-thaw cycles.
Concentration	1 mg/ml (Please refer to the vial label for the specific concentration.)
Immunogen	The clone AT1B2 is derived from hybridization of mouse F0 myeloma cells with spleen cells from BALB/c mice immunized with a recombinant human Tomm22 protein.
Purification	Protein A Purified
Conjugation	Unconjugated
Note	For laboratory use only. Not for any clinical, therapeutic, or diagnostic use in humans or animals. Not for animal or human consumption.



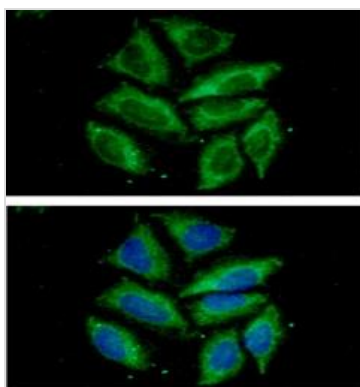
For full product information, images and publications, please visit our [website](#).

DATA IMAGES



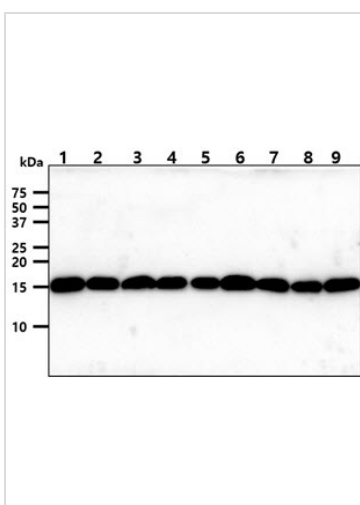
GTX57716 FACS Image

FACS analysis of HeLa cells using GTX57716 TOMM20 antibody.
 Cell Number: 1×10^6 cells
 Red: Primary antibody
 Antibody amount: 2-5 μ g



GTX57716 ICC/IF Image

ICC/IF analysis of HeLa cells using GTX57716 TOMM20 antibody.
 Blue: DAPI
 Green: Primary antibody
 Dilution: 1:100



GTX57716 WB Image

WB analysis of various samples using GTX57716 TOMM20 antibody.
 Lane 1 : HeLa whole cell lysate
 Lane 2 : HepG2 whole cell lysate
 Lane 3 : A431 whole cell lysate
 Lane 4 : K562 whole cell lysate
 Lane 5 : A549 whole cell lysate
 Lane 6 : 293T whole cell lysate
 Lane 7 : MCF-7 whole cell lysate
 Lane 8 : SK-OV-3 whole cell lysate
 Lane 9 : PC-3 whole cell lysate
 Loading : 40 μ g
 Dilution : 1:1000



For full product information, images and publications, please visit our [website](#).