



SZABO SCANDIC

Part of Europa Biosite

Produktinformation



Forschungsprodukte & Biochemikalien



Zellkultur & Verbrauchsmaterial



Diagnostik & molekulare Diagnostik



Laborgeräte & Service

Weitere Information auf den folgenden Seiten!
See the following pages for more information!



Lieferung & Zahlungsart

siehe unsere [Liefer- und Versandbedingungen](#)

Zuschläge

- Mindermengenzuschlag
- Trockeneiszuschlag
- Gefahrgutzuschlag
- Expressversand

SZABO-SCANDIC HandelsgmbH

Quellenstraße 110, A-1100 Wien

T. +43(0)1 489 3961-0

F. +43(0)1 489 3961-7

mail@szabo-scandic.com

www.szabo-scandic.com

[linkedin.com/company/szaboscandic](https://www.linkedin.com/company/szaboscandic) 

ATG3 antibody [AT15F6]

Cat No. GTX57724

Host	Mouse
Clonality	Monoclonal
Isotype	IgG1
Application	WB, ICC/IF, FACS
Reactivity	Human

Package
100 µl

APPLICATION

Application Note

*Optimal dilutions/concentrations should be determined by the researcher.

Suggested dilution	Dilution
WB	Assay dependent
ICC/IF	Assay dependent
FACS	Assay dependent

Not tested in other applications.

Calculated MW 36 kDa. ([Note](#))

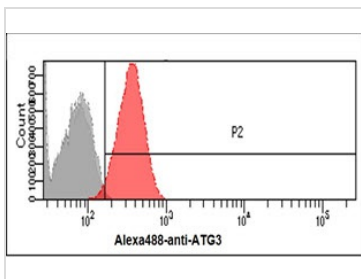
PROPERTIES

Form	Liquid
Buffer	PBS (pH 7.4), 0.02% sodium azide, 10% glycerol
Storage	Store as concentrated solution. Centrifuge briefly prior to opening vial. For short-term storage (1-2 weeks), store at 4°C. For long-term storage, aliquot and store at -20°C or below. Avoid multiple freeze-thaw cycles.
Concentration	1 mg/ml (Please refer to the vial label for the specific concentration.)
Immunogen	The clone AT15F6 is derived from hybridization of mouse F0 myeloma cells with spleen cells from BALB/c mice immunized with a recombinant human ATG5 protein.
Purification	Protein A Purified
Conjugation	Unconjugated
Note	For laboratory use only. Not for any clinical, therapeutic, or diagnostic use in humans or animals. Not for animal or human consumption.



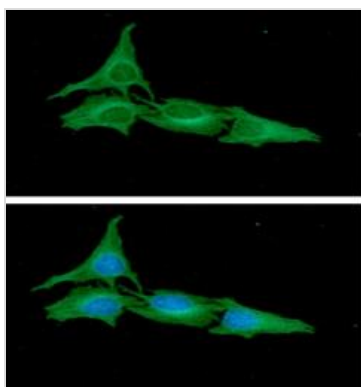
For full product information, images and publications, please visit our [website](#).

DATA IMAGES



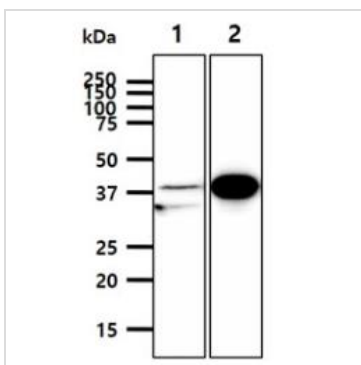
GTX57724 FACS Image

FACS analysis of HeLa cells using GTX57724 ATG3 antibody.
 Cell Number: 1×10^6 cells
 Red: Primary antibody
 Antibody amount: 2-5 μ g



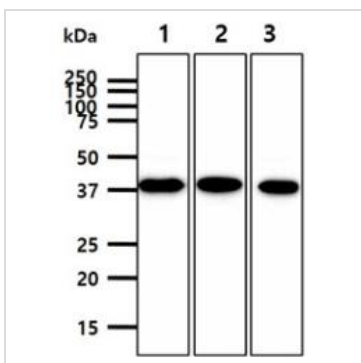
GTX57724 ICC/IF Image

ICC/IF analysis of HeLa cells using GTX57724 ATG3 antibody.
 Blue: DAPI
 Green: Primary antibody
 Dilution: 1:100



GTX57724 WB Image

WB analysis of various samples using GTX57724 ATG3 antibody.
 Lane 1 : 293T cell lysate
 Lane 2 : ATG3 transfected 293T cell lysate
 Loading : 40 μ g
 Dilution : 1:1000



GTX57724 WB Image

WB analysis of various samples using GTX57724 ATG3 antibody.
 Lane 1 : K562 whole cell lysate
 Lane 2 : Raji whole cell lysate
 Lane 3 : Jurkat whole cell lysate
 Loading : 40 μ g
 Dilution : 1:1000



For full product information, images and publications, please visit our [website](#).