



# SZABO SCANDIC

Part of Europa Biosite

## Produktinformation



Forschungsprodukte & Biochemikalien



Zellkultur & Verbrauchsmaterial



Diagnostik & molekulare Diagnostik



Laborgeräte & Service

Weitere Information auf den folgenden Seiten!  
See the following pages for more information!



### Lieferung & Zahlungsart

siehe unsere [Liefer- und Versandbedingungen](#)

### Zuschläge

- Mindermengenzuschlag
- Trockeneiszuschlag
- Gefahrgutzuschlag
- Expressversand

### SZABO-SCANDIC HandelsgmbH

Quellenstraße 110, A-1100 Wien

T. +43(0)1 489 3961-0

F. +43(0)1 489 3961-7

[mail@szabo-scandic.com](mailto:mail@szabo-scandic.com)

[www.szabo-scandic.com](http://www.szabo-scandic.com)

[linkedin.com/company/szaboscandic](https://www.linkedin.com/company/szaboscandic) 

## Hexokinase I + Hexokinase II + Hexokinase III antibody [AT4C12]

**Cat No. GTX57726**

<b>Host</b>	Mouse
<b>Clonality</b>	Monoclonal
<b>Isotype</b>	IgG1
<b>Application</b>	WB
<b>Reactivity</b>	Human, Mouse

**Package**  
100 µl

## APPLICATION

**Application Note**

\*Optimal dilutions/concentrations should be determined by the researcher.

Suggested dilution	Dilution
WB	Assay dependent

Not tested in other applications.

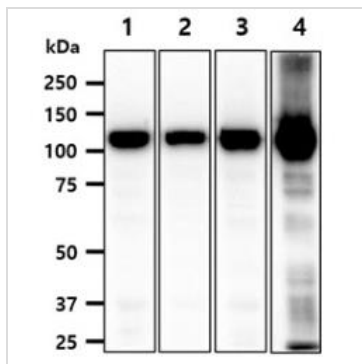
**Specificity/Sensitivity** Based on internal testing result, this antibody does not cross react with human Hexokinase 4.

## PROPERTIES

<b>Form</b>	Liquid
<b>Buffer</b>	PBS (pH 7.4), 0.02% sodium azide, 10% glycerol
<b>Storage</b>	Store as concentrated solution. Centrifuge briefly prior to opening vial. For short-term storage (1-2 weeks), store at 4°C. For long-term storage, aliquot and store at -20°C or below. Avoid multiple freeze-thaw cycles.
<b>Concentration</b>	1 mg/ml (Please refer to the vial label for the specific concentration.)
<b>Immunogen</b>	Recombinant human Hexokinase1,2,3 (1-923aa) purified from E. coli.
<b>Purification</b>	Protein A Purified
<b>Conjugation</b>	Unconjugated
<b>Note</b>	For laboratory use only. Not for any clinical, therapeutic, or diagnostic use in humans or animals. Not for animal or human consumption.

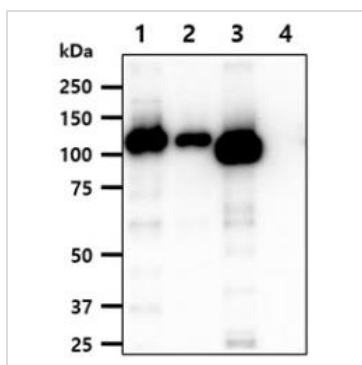


For full product information, images and publications, please visit our [website](#).

**DATA IMAGES**

**GTX57726 WB Image**

WB analysis of various samples using GTX57726 Hexokinase I + Hexokinase II + Hexokinase III antibody [AT4C12].

Lane 1 : HeLa whole cell lysate  
 Lane 2 : Jurkat whole cell lysate  
 Lane 3 : K562 whole cell lysate  
 Lane 4 : Mouse brain tissue lysate  
 Loading : 40 µg  
 Dilution : 1:1000


**GTX57726 WB Image**

WB analysis of various samples using GTX57726 Hexokinase I + Hexokinase II + Hexokinase III antibody [AT4C12].

Lane 1 : Recombinant Human Hexokinase 1 protein  
 Lane 2 : Recombinant Human Hexokinase 2 protein  
 Lane 3 : Recombinant Human Hexokinase 3 protein  
 Lane 4 : Recombinant Human Hexokinase 4 protein  
 Loading : 20 ng  
 Dilution : 1:1000



For full product information, images and publications, please visit our [website](#).