



SZABO SCANDIC

Part of Europa Biosite

Produktinformation



Forschungsprodukte & Biochemikalien



Zellkultur & Verbrauchsmaterial



Diagnostik & molekulare Diagnostik



Laborgeräte & Service

Weitere Information auf den folgenden Seiten!
See the following pages for more information!



Lieferung & Zahlungsart

siehe unsere [Liefer- und Versandbedingungen](#)

Zuschläge

- Mindermengenzuschlag
- Trockeneiszuschlag
- Gefahrgutzuschlag
- Expressversand

SZABO-SCANDIC HandelsgmbH

Quellenstraße 110, A-1100 Wien

T. +43(0)1 489 3961-0

F. +43(0)1 489 3961-7

mail@szabo-scandic.com

www.szabo-scandic.com

[linkedin.com/company/szaboscandic](https://www.linkedin.com/company/szaboscandic) 

c-Myc antibody [GT168]

Cat. No. GTX628459

Host	Mouse
Clonality	Monoclonal
Isotype	IgG1
Application	WB, IHC-P, FACS, IP
Reactivity	Human

Reference (3)

★★★★☆ Review (2)

Package

100 µl, 25 µl

APPLICATION

Application Note

*Optimal dilutions/concentrations should be determined by the researcher.

Suggested dilution	Recommended dilution
WB	1:500-1:3000
IHC-P	1:100-1:1000
FACS	1:50-1:200
IP	1:100-1:500

Not tested in other applications.

Calculated MW 49 kDa. ([Note](#))

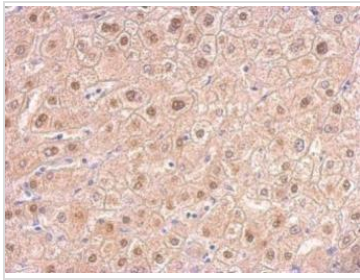
PROPERTIES

Form	Liquid
Buffer	PBS
Preservative	No Preservative
Storage	Store as concentrated solution. Centrifuge briefly prior to opening vial. For short-term storage (1-2 weeks), store at 4°C. For long-term storage, aliquot and store at -20°C or below. Avoid multiple freeze-thaw cycles.
Concentration	1 mg/ml (Please refer to the vial label for the specific concentration.)
Immunogen	The immunogen used to generate this antibody corresponds to human c-Myc
Purification	Affinity purified by Protein G.
Conjugation	Unconjugated
Note	For laboratory use only. Not for any clinical, therapeutic, or diagnostic use in humans or animals. Not for animal or human consumption.



For full product information, images and publications, please visit our [website](#).

DATA IMAGES

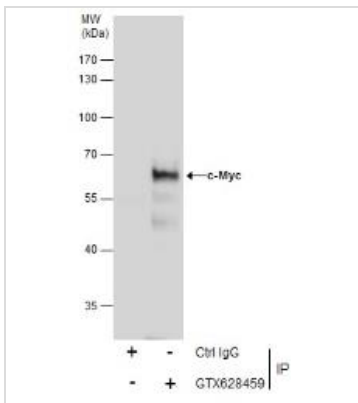
**GTX628459 IHC-P Image**

c-Myc antibody [GT168] detects Myc protein at nucleus on human hepatoma by immunohistochemical analysis.

Sample: Paraffin-embedded hepatoma.

c-Myc antibody [GT168] (GTX628459) dilution: 1:200.

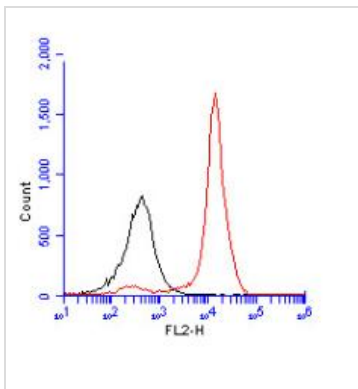
Antigen Retrieval: Trilogy™ (EDTA based, pH 8.0) buffer, 15min

**GTX628459 IP Image**

Immunoprecipitation of c-Myc protein from HeLa nuclear extracts using 5 µg of c-Myc antibody [GT168] (GTX628459).

Western blot analysis was performed using c-Myc antibody [GT168] (GTX628459).

EasyBlot anti-Mouse IgG (GTX221667-01) was used as a secondary reagent.

**GTX628459 FACS Image**

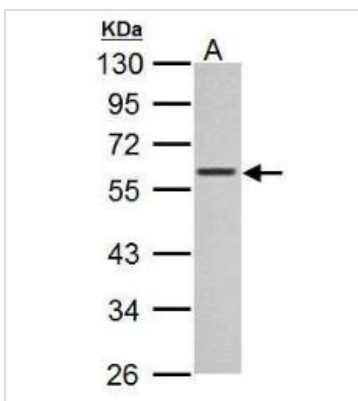
c-Myc antibody [GT168] antibody (GTX628459) detects c-Myc protein by flow cytometry analysis.

Sample: NT2D1 cell fixed in 4% paraformaldehyde for 15 min on ice.

Black: Unlabelled sample was also used as a control.

Red: c-Myc antibody [GT168] antibody (GTX628459) dilution: 1:50.

Acquisition of >20,000 events were collected using Argon ion laser (488nm) and 525/30 bandpass filter.

**GTX628459 WB Image**

c-Myc antibody [GT168] detects Myc protein by Western blot analysis.

A. 30 µg 293T whole cell lysate/extract

10 % SDS-PAGE

c-Myc antibody [GT168] (GTX628459) dilution: 1:500



For full product information, images and publications, please visit our [website](http://www.genetex.com).