



SZABO SCANDIC

Part of Europa Biosite

Produktinformation



Forschungsprodukte & Biochemikalien



Zellkultur & Verbrauchsmaterial



Diagnostik & molekulare Diagnostik



Laborgeräte & Service

Weitere Information auf den folgenden Seiten!
See the following pages for more information!



Lieferung & Zahlungsart

siehe unsere [Liefer- und Versandbedingungen](#)

Zuschläge

- Mindermengenzuschlag
- Trockeneiszuschlag
- Gefahrgutzuschlag
- Expressversand

SZABO-SCANDIC HandelsgmbH

Quellenstraße 110, A-1100 Wien

T. +43(0)1 489 3961-0

F. +43(0)1 489 3961-7

mail@szabo-scandic.com

www.szabo-scandic.com

[linkedin.com/company/szaboscandic](https://www.linkedin.com/company/szaboscandic) 

HIF1 alpha antibody [GT10211]

Cat. No. GTX628480

Host	Mouse
Clonality	Monoclonal
Isotype	IgG2a
Application	WB, ICC/IF, IHC-P, IP
Reactivity	Human, Rat

Reference (13)

★★★★★ Review (5)

Package

100 µl, 25 µl

APPLICATION

Application Note

*Optimal dilutions/concentrations should be determined by the researcher.

Suggested dilution	Recommended dilution
WB	1:100-1:3000
ICC/IF	1:100-1:1000
IHC-P	Assay dependent
IP	1:100-1:500

Not tested in other applications.

Calculated MW 93 kDa. ([Note](#))

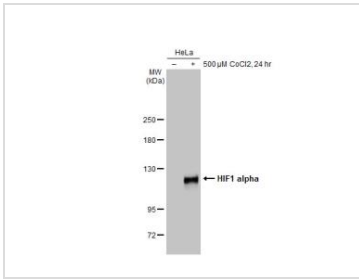
PROPERTIES

Form	Liquid
Buffer	1XPBS (pH7), 20% Glycerol
Preservative	No Preservative
Storage	Store as concentrated solution. Centrifuge briefly prior to opening vial. For short-term storage (1-2 weeks), store at 4°C. For long-term storage, aliquot and store at -20°C or below. Avoid multiple freeze-thaw cycles.
Concentration	1 mg/ml (Please refer to the vial label for the specific concentration.)
Immunogen	The immunogen used to generate this antibody corresponds to human HIF1 alpha
Purification	Affinity purified by Protein G.
Conjugation	Unconjugated
Note	For laboratory use only. Not for any clinical, therapeutic, or diagnostic use in humans or animals. Not for animal or human consumption.



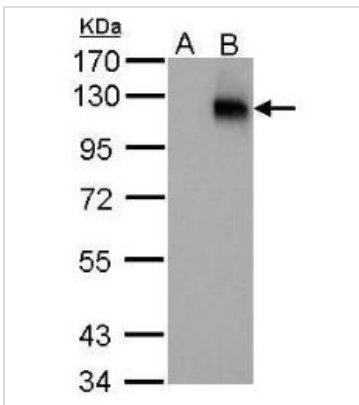
For full product information, images and publications, please visit our [website](#).

DATA IMAGES



GTX628480 WB Image

Untreated (-) and treated (+) HeLa whole cell extracts (30 μg) were separated by 5% SDS-PAGE, and the membrane was blotted with HIF1 alpha antibody [GT10211] (GTX628480) diluted at 1:1000. The HRP-conjugated anti-mouse IgG antibody (GTX213111-01) was used to detect the primary antibody.



GTX628480 WB Image

HIF1 alpha antibody [GT10211] detects HIF1A protein by western blot analysis.

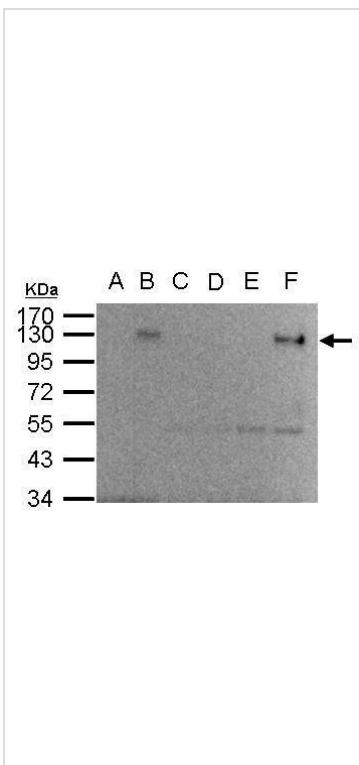
A. 30 μg HepG2 whole cell lysate/extract (untreated)

B. 30 μg HepG2 whole cell lysate/extract (1%O₂ treatment for 48hr)

7.5% SDS-PAGE

HIF1 alpha antibody [GT10211] (GTX628480) dilution: 1:250

The HRP-conjugated anti-mouse IgG antibody (GTX213111-01) was used to detect the primary antibody.



GTX628480 IP Image

HIF-1 alpha antibody immunoprecipitates HIF-1 alpha protein in IP experiments.

IP Sample: 1000 μg HepG2 whole cell lysate/extract

A. 40 μg HepG2 whole cell lysate/extract from normoxia

B. 40 μg HepG2 whole cell lysate/extract from hypoxia 24hr (1%O₂)

C. Control with 2.5 μg of preimmune mouse IgG/HepG2 whole cell lysate/extract from normoxia

D. Control with 2.5 μg of preimmune mouse IgG/ HepG2 whole cell lysate/extract from hypoxia 24hr (1%O₂)

E. Immunoprecipitation of HIF-1 alpha protein by 2.5 μg of HIF-1 alpha antibody (GTX628480)/HepG2 whole cell lysate/extract from normoxia

F. Immunoprecipitation of HIF-1 alpha protein by 2.5 μg of HIF-1 alpha antibody (GTX628480)/HepG2 whole cell lysate/extract from hypoxia 24hr (1%O₂)

10% SDS-PAGE

The immunoprecipitated HIF-1 alpha protein was detected by HIF-1 alpha antibody (GTX628480) diluted at 1:500.

EasyBlot anti-mouse IgG (GTX221667-01) was used as a secondary reagent.



For full product information, images and publications, please visit our [website](#).