



SZABO SCANDIC

Part of Europa Biosite

Produktinformation



Forschungsprodukte & Biochemikalien



Zellkultur & Verbrauchsmaterial



Diagnostik & molekulare Diagnostik



Laborgeräte & Service

Weitere Information auf den folgenden Seiten!
See the following pages for more information!



Lieferung & Zahlungsart

siehe unsere [Liefer- und Versandbedingungen](#)

Zuschläge

- Mindermengenzuschlag
- Trockeneiszuschlag
- Gefahrgutzuschlag
- Expressversand

SZABO-SCANDIC HandelsgmbH

Quellenstraße 110, A-1100 Wien

T. +43(0)1 489 3961-0

F. +43(0)1 489 3961-7

mail@szabo-scandic.com

www.szabo-scandic.com

[linkedin.com/company/szaboscandic](https://www.linkedin.com/company/szaboscandic) 

alpha Tubulin antibody [GT114] (HRP)

Cat No. GTX628802-01

Host	Mouse
Clonality	Monoclonal
Isotype	IgG2a
Application	WB
Reactivity	Human, Mouse, Rat, Zebrafish

Reference (1)

Package

100 µl, 25 µl

APPLICATION

Application Note

*Optimal dilutions/concentrations should be determined by the researcher.

Suggested dilution	Dilution
WB	1:5000-1:20000

Not tested in other applications.

Calculated MW 50 kDa. ([Note](#))

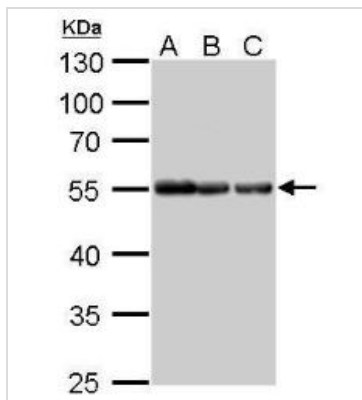
PROPERTIES

Form	Liquid
Buffer	0.05M Tris (pH7.4), 0.15M NaCl, 1%BSA
Preservative	0.005% Thimerosal
Storage	Store as concentrated solution. Centrifuge briefly prior to opening vial. For short-term storage (1-2 weeks), store at 4°C. For long-term storage, aliquot and store at -20°C or below. Avoid multiple freeze-thaw cycles.
Concentration	0.2 mg/ml (Please refer to the vial label for the specific concentration.)
Immunogen	Recombinant protein encompassing a sequence within the center region of human alpha Tubulin. The exact sequence is proprietary.
Purification	Affinity purified by Protein G.
Conjugation	Horseradish peroxidase(HRP)
Note	For laboratory use only. Not for any clinical, therapeutic, or diagnostic use in humans or animals. Not for animal or human consumption.



For full product information, images and publications, please visit our [website](#).

DATA IMAGES



GTX628802-01 WB Image

alpha Tubulin antibody [GT114] (HRP) detects alpha Tubulin protein by Western blot analysis.

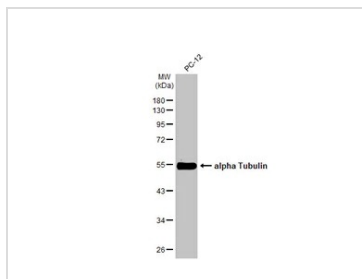
A. 30 µg Jurkat whole cell lysate/extract

B. 30 µg Raji whole cell lysate/extract

C. 30 µg NCI-H929 whole cell lysate/extract

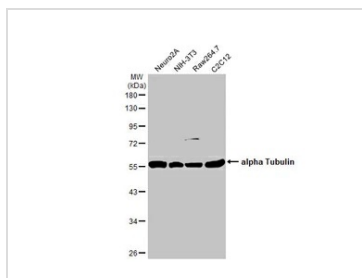
10 % SDS-PAGE

alpha Tubulin antibody [GT114] (HRP) (GTX628802-01) dilution: 1:10000



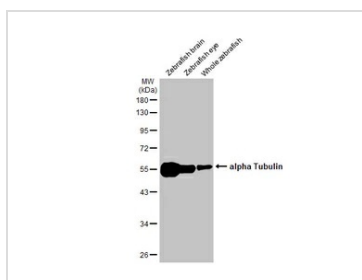
GTX628802-01 WB Image

Various whole cell extracts (30 µg) were separated by 10% SDS-PAGE, and the membrane was blotted with alpha Tubulin antibody [GT114] (HRP) (GTX628802-01) diluted at 1:1000. The HRP-conjugated anti-FALSE was used to detect the primary antibody.



GTX628802-01 WB Image

Various whole cell extracts (30 µg) were separated by 10% SDS-PAGE, and the membrane was blotted with alpha Tubulin antibody [GT114] (HRP) (GTX628802-01) diluted at 1:1000. The HRP-conjugated anti-FALSE was used to detect the primary antibody.



GTX628802-01 WB Image

Various tissue extracts (30 µg) were separated by 10% SDS-PAGE, and the membrane was blotted with alpha Tubulin antibody [GT114] (HRP) (GTX628802-01) diluted at 1:1000. The HRP-conjugated anti-FALSE was used to detect the primary antibody.



For full product information, images and publications, please visit our [website](#).