



SZABO SCANDIC

Part of Europa Biosite

Produktinformation



Forschungsprodukte & Biochemikalien



Zellkultur & Verbrauchsmaterial



Diagnostik & molekulare Diagnostik



Laborgeräte & Service

Weitere Information auf den folgenden Seiten!
See the following pages for more information!



Lieferung & Zahlungsart

siehe unsere [Liefer- und Versandbedingungen](#)

Zuschläge

- Mindermengenzuschlag
- Trockeneiszuschlag
- Gefahrgutzuschlag
- Expressversand

SZABO-SCANDIC HandelsgmbH

Quellenstraße 110, A-1100 Wien

T. +43(0)1 489 3961-0

F. +43(0)1 489 3961-7

mail@szabo-scandic.com

www.szabo-scandic.com

[linkedin.com/company/szaboscandic](https://www.linkedin.com/company/szaboscandic) 

EasyBlot anti sheep IgG (HRP)

Cat No. GTX628906-01

Application	WB
Reactivity	Sheep

Reference (1)
 Package
 250 µl, 50 µl

PRODUCT

Summary

EasyBlot anti-Sheep IgG is an HRP-conjugated second step reagent that specifically reacts with the native, non-reduced form of Sheep IgG and does not bind the reduced, denatured form. Using Easyblot decreases the interference caused by the heavy (~50 kDa) and light chains (~25 kDa) of the IgG used for immunoprecipitation (IP). EasyBlot is simple to use and results in Western Blot detection of only the target band in your IP experiments. Exercise caution when using Protein A/G for IP with EasyBlot. Protein A/G contaminants bind to sheep IgG with high affinity and may cause contaminating bands with a molecular weight similar to IgG heavy chain or light chain.

To minimize background from Protein A/G contamination, we strongly recommend the use of EasyBlot Kit anti-sheep IgG (Optimized for Prot A/G) (GTX228911-01) or EasyBlocker (GTX425858) to minimize protein A/G contamination.

APPLICATION

Application Note

*Optimal dilutions/concentrations should be determined by the researcher.

Suggested dilution	Dilution
WB	1:500-1:3000

Not tested in other applications.

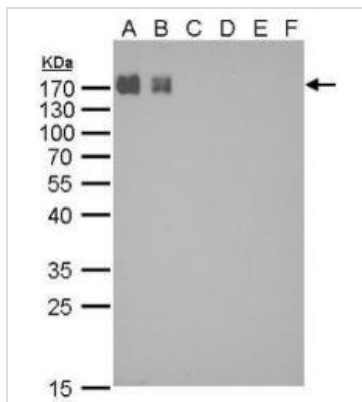
PROPERTIES

Form	Liquid
Buffer	0.05M Tris (pH7.4), 0.15M NaCl, 1%BSA, 40% Glycerol
Preservative	0.005% Thimerosal
Storage	Store as concentrated solution. Centrifuge briefly prior to opening vial. For short-term storage (1-2 weeks), store at 4°C. For long-term storage, aliquot and store at -20°C or below. Avoid multiple freeze-thaw cycles.
Concentration	0.18 mg/ml (Please refer to the vial label for the specific concentration.)
Purification	Affinity purified by Protein G.
Conjugation	Horseradish peroxidase(HRP)
Note	For laboratory use only. Not for any clinical, therapeutic, or diagnostic use in humans or animals. Not for animal or human consumption.



For full product information, images and publications, please visit our [website](#).

DATA IMAGES

**GTX628906-01 WB Image**

EasyBlot anti-Sheep IgG (HRP) detects native sheep IgG protein by Western blot analysis.

- A. 0.2 μ g native sheep IgG
 - B. 0.1 μ g native sheep IgG
 - C. 1 μ g denatured sheep IgG
 - D. 2 μ g denatured sheep IgG
 - E. 4 μ g denatured sheep IgG
 - F. 8 μ g denatured sheep IgG
- 10 % SDS-PAGE

EasyBlot anti-Sheep IgG (HRP) (GTX628906-01) dilution: 1:2000



For full product information, images and publications, please visit our [website](#).