



SZABO SCANDIC

Part of Europa Biosite

Produktinformation



Forschungsprodukte & Biochemikalien



Zellkultur & Verbrauchsmaterial



Diagnostik & molekulare Diagnostik



Laborgeräte & Service

Weitere Information auf den folgenden Seiten!
See the following pages for more information!



Lieferung & Zahlungsart

siehe unsere [Liefer- und Versandbedingungen](#)

Zuschläge

- Mindermengenzuschlag
- Trockeneiszuschlag
- Gefahrgutzuschlag
- Expressversand

SZABO-SCANDIC HandelsgmbH

Quellenstraße 110, A-1100 Wien

T. +43(0)1 489 3961-0

F. +43(0)1 489 3961-7

mail@szabo-scandic.com

www.szabo-scandic.com

[linkedin.com/company/szaboscandic](https://www.linkedin.com/company/szaboscandic) 

Iba1 antibody [HL22]

Cat No. GTX635363

Host	Rabbit
Clonality	Monoclonal
Isotype	IgG
Application	WB, IHC-P, IHC-Fr
Reactivity	Human, Mouse, Rat

 Review (1)

Package
 100 µl, 25 µl

PRODUCT

Summary

Iba1 antibody detects Iba1, a protein widely used by neuroscientists as a microglial marker and to gauge microglial activation. It is also expressed in macrophages. Discrimination between these two cell populations can be achieved via double staining with TMEM119 antibody (GTX134087), another useful microglia-specific marker, by identifying brain-residing microglia as Iba1+/TMEM119+ while CNS-infiltrating macrophages are Iba1+/TMEM119-.

APPLICATION

Application Note

*Optimal dilutions/concentrations should be determined by the researcher.

Suggested dilution	Dilution
WB	1:500-1:3000
IHC-P	1:100-1:1000
IHC-Fr	1:100-1:1000

Not tested in other applications.

Calculated MW 17 kDa. ([Note](#))

PROPERTIES

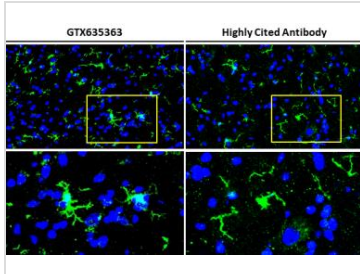
Form	Liquid
Buffer	PBS
Storage	Store as concentrated solution. Centrifuge briefly prior to opening vial. For short-term storage (1-2 weeks), store at 4°C. For long-term storage, aliquot and store at -20°C or below. Avoid multiple freeze-thaw cycles.
Concentration	1.01 mg/ml (Please refer to the vial label for the specific concentration.)
Immunogen	Carrier-protein conjugated synthetic peptide encompassing a sequence within the C-terminus region of human Iba1. The exact sequence is proprietary.
Purification	Affinity purified by Protein A.
Conjugation	Unconjugated



For full product information, images and publications, please visit our [website](#).

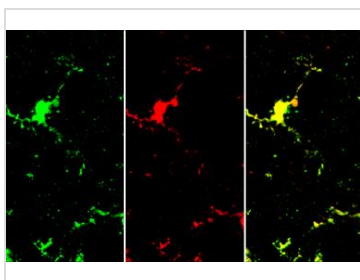
Note For laboratory use only. Not for any clinical, therapeutic, or diagnostic use in humans or animals. Not for animal or human consumption.

DATA IMAGES



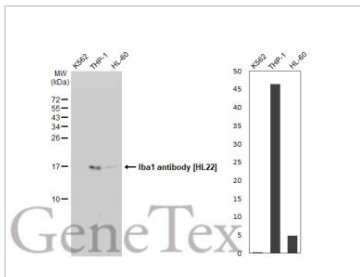
GTX635363 IHC-Fr Image

Iba1 antibody [HL22] detects Iba1 protein by immunohistochemical analysis.
 Sample: Frozen-sectioned mouse spinal cord.
 Green: Iba1 stained by Iba1 antibody [HL22] (GTX635363) diluted at 1:200.
 Blue: Fluoroshield with DAPI (GTX30920).



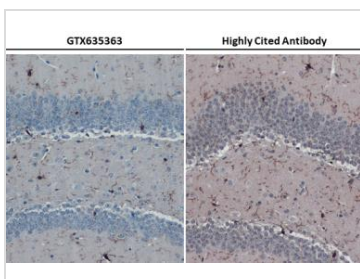
GTX635363 IHC-Fr Image

Iba1 antibody [HL22] detects Iba1 protein by immunohistochemical analysis.
 Sample: Frozen-sectioned mouse brain.
 Green: Iba1 stained by Iba1 antibody [HL22] (GTX635363) diluted at 1:100.
 Red: Iba1 stained by Iba1 antibody [HL22-RT] (GTX635400) diluted at 1:100.
 Blue: Fluoroshield with DAPI (GTX30920).



GTX635363 WB Image

Various whole cell extracts (30 µg) were separated by 15% SDS-PAGE, and the membrane was blotted with Iba1 antibody [HL22] (GTX635363) diluted at 1:1000. The HRP-conjugated anti-rabbit IgG antibody (GTX213110-01) was used to detect the primary antibody, and the signal was developed with Trident ECL plus-Enhanced. Corresponding RNA expression data for the same cell lines are based on Human Protein Atlas program.



GTX635363 IHC-P Image

Iba1 antibody [HL22] detects Iba1 protein by immunohistochemical analysis.
 Sample: Paraffin-embedded mouse hippocampus.
 Iba1 stained by Iba1 antibody [HL22] (GTX635363) diluted at 1:1000.
 Antigen Retrieval: Citrate buffer, pH 6.0, 15 min



For full product information, images and publications, please visit our [website](#).