



SZABO SCANDIC

Part of Europa Biosite

Produktinformation



Forschungsprodukte & Biochemikalien



Zellkultur & Verbrauchsmaterial



Diagnostik & molekulare Diagnostik



Laborgeräte & Service

Weitere Information auf den folgenden Seiten!
See the following pages for more information!



Lieferung & Zahlungsart

siehe unsere [Liefer- und Versandbedingungen](#)

Zuschläge

- Mindermengenzuschlag
- Trockeneiszuschlag
- Gefahrgutzuschlag
- Expressversand

SZABO-SCANDIC HandelsgmbH

Quellenstraße 110, A-1100 Wien

T. +43(0)1 489 3961-0

F. +43(0)1 489 3961-7

mail@szabo-scandic.com

www.szabo-scandic.com

[linkedin.com/company/szaboscandic](https://www.linkedin.com/company/szaboscandic) 

CA19-9 antibody [GTX933]

Cat No. GTX635389

Host	Mouse
Clonality	Monoclonal
Isotype	IgG1
Application	WB, ICC/IF, IHC-P, FACS, ELISA
Reactivity	Human

Package
100 µl, 25 µl

APPLICATION

Application Note

*Optimal dilutions/concentrations should be determined by the researcher.

Suggested dilution	Dilution
WB	1:1000
ICC/IF	Assay dependent
IHC-P	Assay dependent
FACS	Assay dependent
ELISA	Assay dependent

Not tested in other applications.

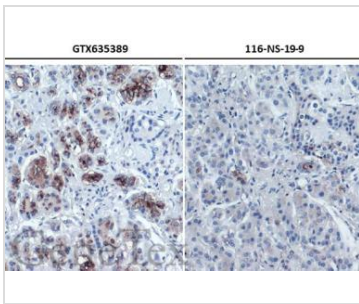
PROPERTIES

Form	Liquid
Buffer	20% Glycerol in PBS
Storage	Store as concentrated solution. Centrifuge briefly prior to opening vial. For short-term storage (1-2 weeks), store at 4°C. For long-term storage, aliquot and store at -20°C or below. Avoid multiple freeze-thaw cycles.
Concentration	1 mg/ml (Please refer to the vial label for the specific concentration.)
Immunogen	The immunogen used to generate this antibody corresponds to CA19-9.
Purification	Affinity purified by Protein G.
Conjugation	Unconjugated
Note	For laboratory use only. Not for any clinical, therapeutic, or diagnostic use in humans or animals. Not for animal or human consumption.



For full product information, images and publications, please visit our [website](#).

DATA IMAGES



GTX635389 IHC-P Image

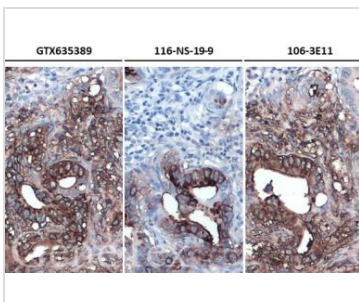
CA19-9 antibody [GTX933] detects CA19-9 by immunohistochemical analysis.

Sample: Paraffin-embedded human pancreatic ductal adenocarcinoma.

CA19-9 stained by CA19-9 antibody [GTX933] (GTX635389) diluted at 1:500 and competitor's antibody (Company A) diluted at 1:250.

Antigen Retrieval: Citrate buffer, pH 6.0, 15 min

*Competitor's antibody is not affiliated with GeneTex and does not endorse this product.



GTX635389 IHC-P Image

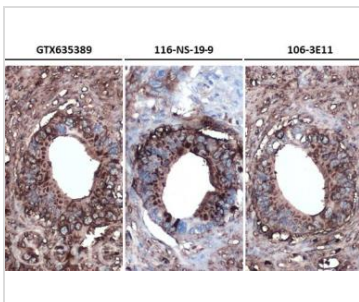
CA19-9 antibody [GTX933] detects CA19-9 by immunohistochemical analysis.

Sample: Paraffin-embedded human pancreatic ductal adenocarcinoma.

CA19-9 stained by CA19-9 antibody [GTX933] (GTX635389) diluted at 1:500 and competitor's antibody diluted at 1:250 (Company A) and 1:500 (Company B).

Antigen Retrieval: Citrate buffer, pH 6.0, 15 min

*Competitor's antibody is not affiliated with GeneTex and does not endorse this product.



GTX635389 IHC-P Image

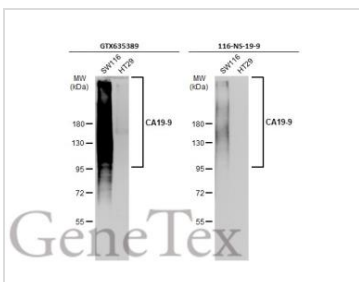
CA19-9 antibody [GTX933] detects CA19-9 by immunohistochemical analysis.

Sample: Paraffin-embedded human pancreatic ductal adenocarcinoma.

CA19-9 stained by CA19-9 antibody [GTX933] (GTX635389) diluted at 1:500 and competitor's antibody diluted at 1:250 (Company A) and 1:500 (Company B).

Antigen Retrieval: Citrate buffer, pH 6.0, 15 min

*Competitor's antibody is not affiliated with GeneTex and does not endorse this product.



GTX635389 WB Image

Various whole cell extracts (30 µg) were separated by 7.5% SDS-PAGE, and the membranes were blotted with CA19-9 antibody [GTX933] (GTX635389) diluted at 1:1000 and competitor's antibody (MA5-12421) diluted at 1:250. The HRP-conjugated anti-mouse IgG antibody (GTX213111-01) was used to detect the primary antibody.

*The competitor is not affiliated with GeneTex and does not endorse this product.



For full product information, images and publications, please visit our [website](http://www.genetex.com).