



SZABO SCANDIC

Part of Europa Biosite

Produktinformation



Forschungsprodukte & Biochemikalien



Zellkultur & Verbrauchsmaterial



Diagnostik & molekulare Diagnostik



Laborgeräte & Service

Weitere Information auf den folgenden Seiten!
See the following pages for more information!



Lieferung & Zahlungsart

siehe unsere [Liefer- und Versandbedingungen](#)

Zuschläge

- Mindermengenzuschlag
- Trockeneiszuschlag
- Gefahrgutzuschlag
- Expressversand

SZABO-SCANDIC HandelsgmbH

Quellenstraße 110, A-1100 Wien

T. +43(0)1 489 3961-0

F. +43(0)1 489 3961-7

mail@szabo-scandic.com

www.szabo-scandic.com

[linkedin.com/company/szaboscandic](https://www.linkedin.com/company/szaboscandic) 

CA19-9 antibody [GT252]

Cat No. GTX635390

| | |
|--------------------|-------------------------|
| Host | Mouse |
| Clonality | Monoclonal |
| Isotype | IgG1 |
| Application | WB, ICC/IF, IHC-P, FACS |
| Reactivity | Human |

Package
100 µl, 25 µl

APPLICATION

Application Note

*Optimal dilutions/concentrations should be determined by the researcher.

| Suggested dilution | Dilution |
|--------------------|-----------------|
| WB | 1:1000 |
| ICC/IF | Assay dependent |
| IHC-P | Assay dependent |
| FACS | Assay dependent |

Not tested in other applications.

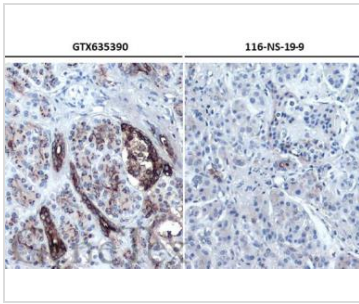
PROPERTIES

| | |
|----------------------|--|
| Form | Liquid |
| Buffer | 20% Glycerol in PBS |
| Storage | Store as concentrated solution. Centrifuge briefly prior to opening vial. For short-term storage (1-2 weeks), store at 4°C. For long-term storage, aliquot and store at -20°C or below. Avoid multiple freeze-thaw cycles. |
| Concentration | 1 mg/ml (Please refer to the vial label for the specific concentration.) |
| Immunogen | The immunogen used to generate this antibody corresponds to CA19-9. |
| Purification | Affinity purified by Protein G. |
| Conjugation | Unconjugated |
| Note | For laboratory use only. Not for any clinical, therapeutic, or diagnostic use in humans or animals. Not for animal or human consumption. |



For full product information, images and publications, please visit our [website](#).

DATA IMAGES



GTX635390 IHC-P Image

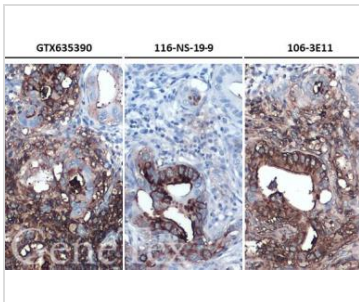
CA19-9 antibody [GT252] detects CA19-9 by immunohistochemical analysis.

Sample: Paraffin-embedded human pancreatic ductal adenocarcinoma.

CA19-9 stained by CA19-9 antibody [GT252] (GTX635390) diluted at 1:500 and competitor's antibody (Company A) diluted at 1:250.

Antigen Retrieval: Citrate buffer, pH 6.0, 15 min

*Competitor's antibody is not affiliated with GeneTex and does not endorse this product.



GTX635390 IHC-P Image

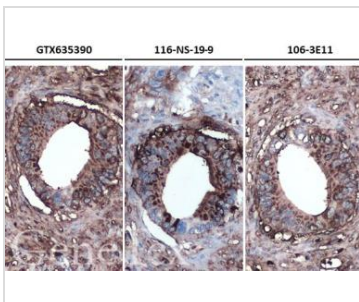
CA19-9 antibody [GT252] detects CA19-9 by immunohistochemical analysis.

Sample: Paraffin-embedded human pancreatic ductal adenocarcinoma.

CA19-9 stained by CA19-9 antibody [GT252] (GTX635390) diluted at 1:500 and competitor's antibody diluted at 1:250 (Company A) and 1:500 (Company B).

Antigen Retrieval: Citrate buffer, pH 6.0, 15 min

*Competitor's antibody is not affiliated with GeneTex and does not endorse this product.



GTX635390 IHC-P Image

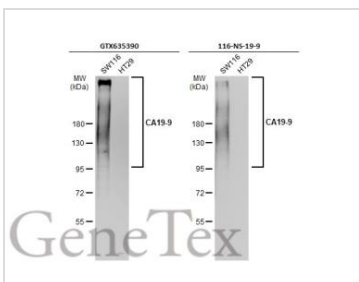
CA19-9 antibody [GT252] detects CA19-9 by immunohistochemical analysis.

Sample: Paraffin-embedded human pancreatic ductal adenocarcinoma.

CA19-9 stained by CA19-9 antibody [GT252] (GTX635390) diluted at 1:500 and competitor's antibody diluted at 1:250 (Company A) and 1:500 (Company B).

Antigen Retrieval: Citrate buffer, pH 6.0, 15 min

*Competitor's antibody is not affiliated with GeneTex and does not endorse this product.



GTX635390 WB Image

Various whole cell extracts (30 µg) were separated by 7.5% SDS-PAGE, and the membranes were blotted with CA19-9 antibody [GT252] (GTX635390) diluted at 1:1000 and competitor's antibody (MA5-12421) diluted at 1:250. The HRP-conjugated anti-mouse IgG antibody (GTX213111-01) was used to detect the primary antibody.

*The competitor is not affiliated with GeneTex and does not endorse this product.



For full product information, images and publications, please visit our [website](#).