



# SZABO SCANDIC

Part of Europa Biosite

## Produktinformation



Forschungsprodukte & Biochemikalien



Zellkultur & Verbrauchsmaterial



Diagnostik & molekulare Diagnostik



Laborgeräte & Service

Weitere Information auf den folgenden Seiten!  
See the following pages for more information!



### Lieferung & Zahlungsart

siehe unsere [Liefer- und Versandbedingungen](#)

### Zuschläge

- Mindermengenzuschlag
- Trockeneiszuschlag
- Gefahrgutzuschlag
- Expressversand

### SZABO-SCANDIC HandelsgmbH

Quellenstraße 110, A-1100 Wien

T. +43(0)1 489 3961-0

F. +43(0)1 489 3961-7

[mail@szabo-scandic.com](mailto:mail@szabo-scandic.com)

[www.szabo-scandic.com](http://www.szabo-scandic.com)

[linkedin.com/company/szaboscandic](https://www.linkedin.com/company/szaboscandic) 

## Ca19-9 antibody [GT8510]

**Cat No. GTX635391**

<b>Host</b>	Mouse
<b>Clonality</b>	Monoclonal
<b>Isotype</b>	IgG1
<b>Application</b>	WB, ICC/IF, IHC-P, FACS
<b>Reactivity</b>	Human

**Package**  
100 µl, 25 µl

## APPLICATION

**Application Note**

\*Optimal dilutions/concentrations should be determined by the researcher.

Suggested dilution	Dilution
WB	1:1000
ICC/IF	Assay dependent
IHC-P	Assay dependent
FACS	Assay dependent

Not tested in other applications.

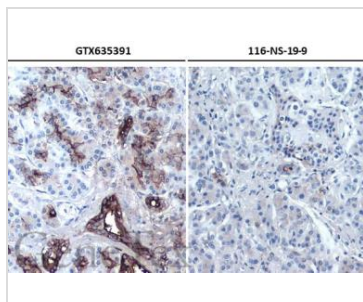
## PROPERTIES

<b>Form</b>	Liquid
<b>Buffer</b>	20% Glycerol in PBS
<b>Storage</b>	Store as concentrated solution. Centrifuge briefly prior to opening vial. For short-term storage (1-2 weeks), store at 4°C. For long-term storage, aliquot and store at -20°C or below. Avoid multiple freeze-thaw cycles.
<b>Concentration</b>	1 mg/ml (Please refer to the vial label for the specific concentration.)
<b>Immunogen</b>	The immunogen used to generate this antibody corresponds to CA19-9.
<b>Purification</b>	Affinity purified by Protein G.
<b>Conjugation</b>	Unconjugated
<b>Note</b>	For laboratory use only. Not for any clinical, therapeutic, or diagnostic use in humans or animals. Not for animal or human consumption.



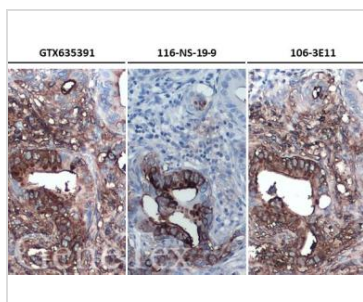
For full product information, images and publications, please visit our [website](#).

DATA IMAGES



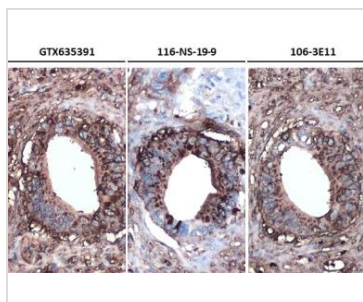
**GTX635391 IHC-P Image**

Ca19-9 antibody [GT8510] detects CA19-9 by immunohistochemical analysis.  
 Sample: Paraffin-embedded human pancreatic ductal adenocarcinoma.  
 CA19-9 stained by Ca19-9 antibody [GT8510] (GTX635391) diluted at 1:500 and competitor's antibody (Company A) diluted at 1:250.  
 Antigen Retrieval: Citrate buffer, pH 6.0, 15 min  
 \*Competitor's antibody is not affiliated with GeneTex and does not endorse this product.



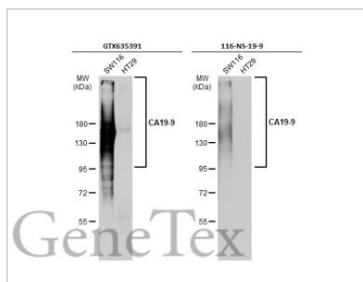
**GTX635391 IHC-P Image**

Ca19-9 antibody [GT8510] detects CA19-9 by immunohistochemical analysis.  
 Sample: Paraffin-embedded human pancreatic ductal adenocarcinoma.  
 CA19-9 stained by Ca19-9 antibody [GT8510] (GTX635391) diluted at 1:500 and competitor's antibody diluted at 1:250 (Company A) and 1:500 (Company B).  
 Antigen Retrieval: Citrate buffer, pH 6.0, 15 min  
 \*Competitor's antibody is not affiliated with GeneTex and does not endorse this product.



**GTX635391 IHC-P Image**

Ca19-9 antibody [GT8510] detects CA19-9 by immunohistochemical analysis.  
 Sample: Paraffin-embedded human pancreatic ductal adenocarcinoma.  
 CA19-9 stained by Ca19-9 antibody [GT8510] (GTX635391) diluted at 1:500 and competitor's antibody diluted at 1:250 (Company A) and 1:500 (Company B).  
 Antigen Retrieval: Citrate buffer, pH 6.0, 15 min  
 \*Competitor's antibody is not affiliated with GeneTex and does not endorse this product.



**GTX635391 WB Image**

Various whole cell extracts (30 µg) were separated by 7.5% SDS-PAGE, and the membranes were blotted with Ca19-9 antibody [GT8510] (GTX635391) diluted at 1:1000 and competitor's antibody (MA5-12421) diluted at 1:250. The HRP-conjugated anti-mouse IgG antibody (GTX213111-01) was used to detect the primary antibody.  
 \*The competitor is not affiliated with GeneTex and does not endorse this product.



For full product information, images and publications, please visit our [website](#).