



SZABO SCANDIC

Part of Europa Biosite

Produktinformation



Forschungsprodukte & Biochemikalien



Zellkultur & Verbrauchsmaterial



Diagnostik & molekulare Diagnostik



Laborgeräte & Service

Weitere Information auf den folgenden Seiten!
See the following pages for more information!



Lieferung & Zahlungsart

siehe unsere [Liefer- und Versandbedingungen](#)

Zuschläge

- Mindermengenzuschlag
- Trockeneiszuschlag
- Gefahrgutzuschlag
- Expressversand

SZABO-SCANDIC HandelsgmbH

Quellenstraße 110, A-1100 Wien

T. +43(0)1 489 3961-0

F. +43(0)1 489 3961-7

mail@szabo-scandic.com

www.szabo-scandic.com

[linkedin.com/company/szaboscandic](https://www.linkedin.com/company/szaboscandic) 

SARS-CoV-2 (COVID-19) nucleocapsid antibody [HL453]

Cat No. GTX635687

Host	Rabbit
Clonality	Monoclonal
Isotype	IgG
Application	WB, ICC/IF, ELISA
Reactivity	SARS Coronavirus, SARS Coronavirus 2

Package
100 µl, 25 µl

APPLICATION

Application Note

*Optimal dilutions/concentrations should be determined by the researcher.

Suggested dilution	Dilution
WB	1:1000-1:10000
ICC/IF	1:100-1:1000
ELISA	Assay dependent

Not tested in other applications.

Specificity/Sensitivity This antibody detects both SARS-CoV nucleocapsid and SARS-CoV-2 nucleocapsid proteins. Our internal testing indicates no cross-reactivity with MERS-CoV nucleocapsid protein.

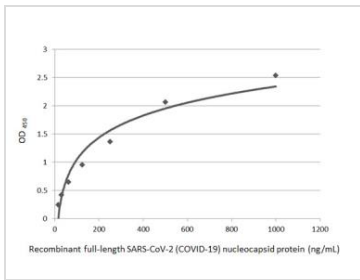
PROPERTIES

Form	Liquid
Buffer	PBS
Storage	Store as concentrated solution. Centrifuge briefly prior to opening vial. For short-term storage (1-2 weeks), store at 4°C. For long-term storage, aliquot and store at -20°C or below. Avoid multiple freeze-thaw cycles.
Concentration	1 mg/ml (Please refer to the vial label for the specific concentration.)
Immunogen	Full length SARS-CoV-2 (COVID-19) nucleocapsid Recombinant protein.
Purification	Affinity purified by Protein A.
Conjugation	Unconjugated
Note	For laboratory use only. Not for any clinical, therapeutic, or diagnostic use in humans or animals. Not for animal or human consumption.



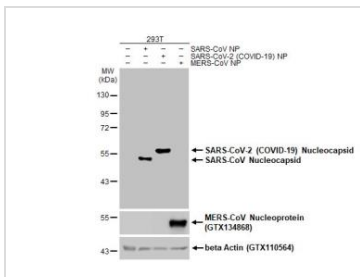
For full product information, images and publications, please visit our [website](#).

DATA IMAGES



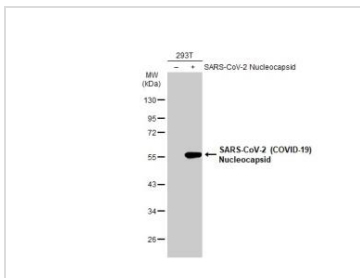
GTX635687 ELISA Image

Indirect ELISA analysis performed by coating plate with recombinant full-length SARS-CoV-2 (COVID-19) nucleocapsid protein (GTX135592-pro) (15.63-1000 ng/mL). Coated protein probed with SARS-CoV-2 (COVID-19) nucleocapsid antibody [HL453] (GTX635687) (1 µg/mL). Rabbit IgG antibody (HRP) (GTX213110-01) (1:10000) detected bound primary antibody.



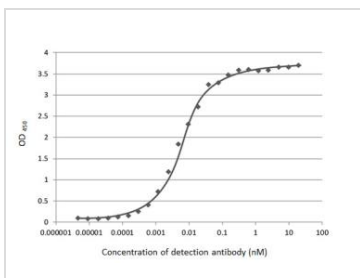
GTX635687 WB Image

Non-transfected (-) and transfected (+) 293T whole cell extracts (30 µg) were separated by 10% SDS-PAGE, and the membrane was blotted with SARS-CoV-2 (COVID-19) nucleocapsid antibody [HL453] (GTX635687) diluted at 1:5000. The HRP-conjugated anti-rabbit IgG antibody (GTX213110-01) was used to detect the primary antibody, and the signal was developed with Trident ECL plus-Enhanced.



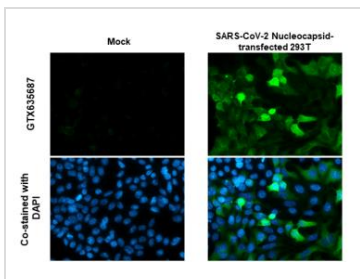
GTX635687 WB Image

Non-transfected (-) and transfected (+) 293T whole cell extracts (30 µg) were separated by 10% SDS-PAGE, and the membrane was blotted with SARS-CoV-2 (COVID-19) nucleocapsid antibody [HL453] (GTX635687) diluted at 1:5000. The HRP-conjugated anti-rabbit IgG antibody (GTX213110-01) was used to detect the primary antibody.



GTX635687 ELISA Image

Indirect ELISA analysis performed by coating plate with recombinant full-length SARS-CoV-2 (COVID-19) nucleocapsid protein (GTX135592-pro) (50 ng). Coated protein probed with SARS-CoV-2 (COVID-19) nucleocapsid antibody [HL453] (GTX635687) ($4.8 \times 10^{-6} \sim 20$ nM). Rabbit IgG antibody (HRP) (GTX213110-01) (1:10000) detected bound primary antibody.
EC50 : 0.006 nM



GTX635687 ICC/IF Image

SARS-CoV-2 (COVID-19) nucleocapsid antibody [HL453] detects SARS-CoV-2 (COVID-19) nucleocapsid protein by immunofluorescent analysis.
Sample: Mock and transfected 293T cells were fixed in 4% paraformaldehyde at RT for 15 min.
Green: SARS-CoV-2 (COVID-19) nucleocapsid stained by SARS-CoV-2 (COVID-19) nucleocapsid antibody [HL453] (GTX635687) diluted at 1:1000.
Blue: Fluoroshield with DAPI (GTX30920).



For full product information, images and publications, please visit our [website](https://www.genetex.com).