



SZABO SCANDIC

Part of Europa Biosite

Produktinformation



Forschungsprodukte & Biochemikalien



Zellkultur & Verbrauchsmaterial



Diagnostik & molekulare Diagnostik



Laborgeräte & Service

Weitere Information auf den folgenden Seiten!
See the following pages for more information!



Lieferung & Zahlungsart

siehe unsere [Liefer- und Versandbedingungen](#)

Zuschläge

- Mindermengenzuschlag
- Trockeneiszuschlag
- Gefahrgutzuschlag
- Expressversand

SZABO-SCANDIC HandelsgmbH

Quellenstraße 110, A-1100 Wien

T. +43(0)1 489 3961-0

F. +43(0)1 489 3961-7

mail@szabo-scandic.com

www.szabo-scandic.com

[linkedin.com/company/szaboscandic](https://www.linkedin.com/company/szaboscandic) 

SARS-CoV-2 (COVID-19) nucleocapsid antibody [HL5511]

Cat No. GTX635689

Host	Rabbit
Clonality	Monoclonal
Isotype	IgG
Application	WB, ICC/IF, ELISA, sELISA
Reactivity	SARS Coronavirus 2

Package
100 µl, 25 µl

APPLICATION

Application Note

*Optimal dilutions/concentrations should be determined by the researcher.

Suggested dilution	Dilution
WB	1:1000-1:10000
ICC/IF	1:100-1:1000
ELISA	Assay dependent
sELISA	Assay dependent

Note : Capture : GTX635689, Detection: GTX635678/GTX635688

Not tested in other applications.

Specificity/Sensitivity

This antibody detects SARS-CoV-2 nucleocapsid protein, but does not cross-react with SARS-CoV or MERS-CoV nucleocapsid proteins based on our internal testing.

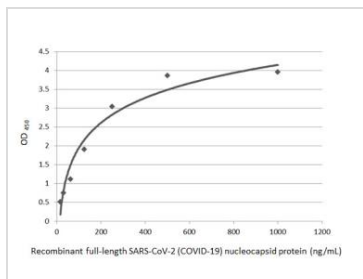
PROPERTIES

Form	Liquid
Buffer	PBS
Storage	Store as concentrated solution. Centrifuge briefly prior to opening vial. For short-term storage (1-2 weeks), store at 4°C. For long-term storage, aliquot and store at -20°C or below. Avoid multiple freeze-thaw cycles.
Concentration	1 mg/ml (Please refer to the vial label for the specific concentration.)
Immunogen	Full length SARS-CoV-2 (COVID-19) nucleocapsid Recombinant protein.
Purification	Affinity purified by Protein A.
Conjugation	Unconjugated
Note	For laboratory use only. Not for any clinical, therapeutic, or diagnostic use in humans or animals. Not for animal or human consumption.



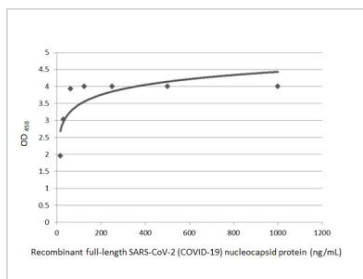
For full product information, images and publications, please visit our [website](#).

DATA IMAGES



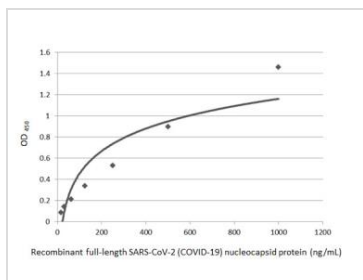
GTX635689 ELISA Image

Sandwich ELISA detection of recombinant full-length SARS-CoV-2 (COVID-19) nucleocapsid protein, His tag protein (GTX135592-pro) using SARS-CoV-2 (COVID-19) nucleocapsid antibody [HL5511] (GTX635689) as capture antibody at concentration of 5 µg/mL and HRP-conjugated SARS-CoV-2 (COVID-19) nucleocapsid antibody [HL249] (GTX635678) as detection antibody at concentration of 1 µg/mL.



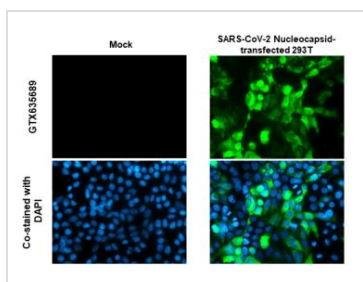
GTX635689 ELISA Image

Sandwich ELISA detection of recombinant full-length SARS-CoV-2 (COVID-19) nucleocapsid protein, His tag protein (GTX135592-pro) using SARS-CoV-2 (COVID-19) nucleocapsid antibody [HL5511] (GTX635689) as capture antibody at concentration of 5 µg/mL and HRP-conjugated SARS-CoV-2 (COVID-19) nucleocapsid antibody [HL455] (GTX635688) as detection antibody at concentration of 1 µg/mL.



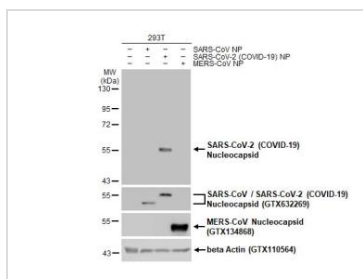
GTX635689 ELISA Image

Indirect ELISA analysis performed by coating plate with recombinant full-length SARS-CoV-2 (COVID-19) nucleocapsid protein (GTX135592-pro) (15.63-1000 ng/mL). Coated protein probed with SARS-CoV-2 (COVID-19) nucleocapsid antibody [HL5511] (GTX635689) (1 µg/mL). Rabbit IgG antibody (HRP) (GTX213110-01) (1:10000) detected bound primary antibody.



GTX635689 ICC/IF Image

SARS-CoV-2 (COVID-19) nucleocapsid antibody [HL5511] detects SARS-CoV-2 (COVID-19) nucleocapsid protein by immunofluorescent analysis.
 Sample: Mock and transfected 293T cells were fixed in 4% paraformaldehyde at RT for 15 min.
 Green: SARS-CoV-2 (COVID-19) nucleocapsid stained by SARS-CoV-2 (COVID-19) nucleocapsid antibody [HL5511] (GTX635689) diluted at 1:1000.
 Blue: Fluoroshield with DAPI (GTX30920).



GTX635689 WB Image

Non-transfected (-) and transfected (+) 293T whole cell extracts (30 µg) were separated by 10% SDS-PAGE, and the membrane was blotted with SARS-CoV-2 (COVID-19) nucleocapsid antibody [HL5511] (GTX635689) diluted at 1:5000. The HRP-conjugated anti-rabbit IgG antibody (GTX213110-01) was used to detect the primary antibody, and the signal was developed with Trident ECL plus-Enhanced.



For full product information, images and publications, please visit our [website](#).