



SZABO SCANDIC

Part of Europa Biosite

Produktinformation



Forschungsprodukte & Biochemikalien



Zellkultur & Verbrauchsmaterial



Diagnostik & molekulare Diagnostik



Laborgeräte & Service

Weitere Information auf den folgenden Seiten!
See the following pages for more information!



Lieferung & Zahlungsart

siehe unsere [Liefer- und Versandbedingungen](#)

Zuschläge

- Mindermengenzuschlag
- Trockeneiszuschlag
- Gefahrgutzuschlag
- Expressversand

SZABO-SCANDIC HandelsgmbH

Quellenstraße 110, A-1100 Wien

T. +43(0)1 489 3961-0

F. +43(0)1 489 3961-7

mail@szabo-scandic.com

www.szabo-scandic.com

[linkedin.com/company/szaboscandic](https://www.linkedin.com/company/szaboscandic) 

SARS-CoV-2 (COVID-19) Spike RBD antibody [HL1003]

Cat No. GTX635792

Host	Rabbit
Clonality	Monoclonal
Isotype	IgG
Application	ICC/IF, ELISA, Neutralizing/Inhibition, Sandwich ELISA
Reactivity	SARS Coronavirus 2

 Review (2)

Package
100 µl, 25 µl

APPLICATION

Application Note

*Optimal dilutions/concentrations should be determined by the researcher.

Suggested dilution	Dilution
ICC/IF	1:100-1:1000
ELISA	Assay dependent
Neutralizing/Inhibition	Assay dependent
Sandwich ELISA	Assay dependent

Note : This antibody inhibits infection of mammalian cells by live SARS-CoV-2.

Capture : GTX632604 / GTX635807, Detection : GTX635792

Not tested in other applications.

Specificity/Sensitivity

This antibody detects SARS-CoV-2 Spike protein, but does not cross-react with SARS-CoV spike protein based on customer's feedback.

PROPERTIES

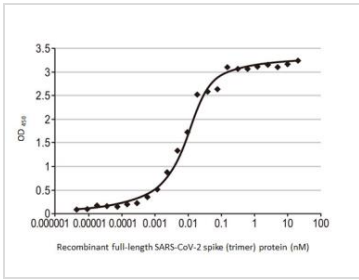
Form	Liquid
Buffer	PBS
Storage	Store as concentrated solution. Centrifuge briefly prior to opening vial. For short-term storage (1-2 weeks), store at 4°C. For long-term storage, aliquot and store at -20°C or below. Avoid multiple freeze-thaw cycles.
Concentration	1.8 mg/ml (Please refer to the vial label for the specific concentration.)
Immunogen	Recombinant protein corresponding to SARS-CoV-2 Spike RBD. (SARS-CoV-2 (strain Wuhan-Hu-1)) The exact sequence is proprietary.
Purification	Affinity purified by Protein A.
Conjugation	Unconjugated
Note	For laboratory use only. Not for any clinical, therapeutic, or diagnostic use in humans or animals. Not for animal or human consumption.



For full product information, images and publications, please visit our [website](#).

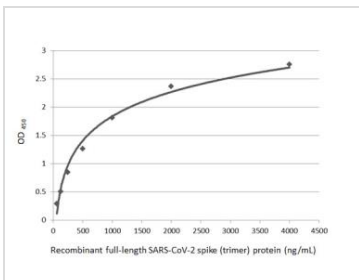
Date 2021 / 02 / 04 Page 1 of 2

DATA IMAGES



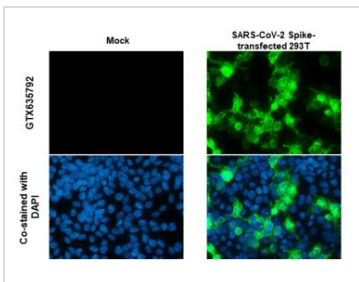
GTX635792 ELISA Image

Indirect ELISA analysis performed by coating plate with recombinant full-length SARS-CoV-2 spike (trimer) protein (50 ng). Coated protein probed with SARS-CoV-2 (COVID-19) Spike RBD antibody [HL1003] (GTX635792) ($20-4.8 \times 10^{-6}$ nM). Rabbit IgG antibody (HRP) (GTX213110-01) (1:10000) detected bound primary antibody.
EC50 : 7.49 pM



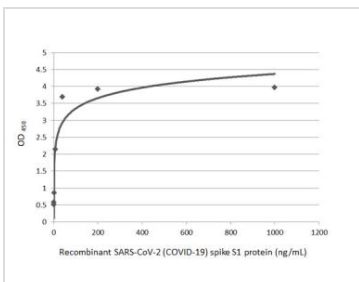
GTX635792 ELISA Image

Sandwich ELISA detection of recombinant full-length SARS-CoV-2 spike (trimer) protein using SARS-CoV-2 / SARS-CoV-2 (COVID-19) spike antibody [1A9] (GTX632604) as capture antibody at concentration of 5 µg/mL and SARS-CoV-2 (COVID-19) Spike RBD antibody [HL1003] (GTX635792) as detection antibody at concentration of 1 µg/mL. Rabbit IgG antibody (HRP) (GTX213110-01) was diluted at 1:10000 and used to detect the primary antibody.



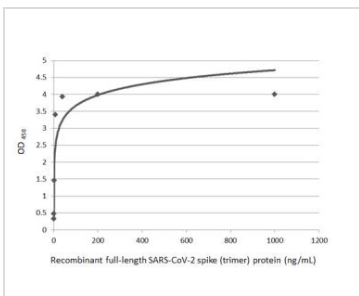
GTX635792 ICC/IF Image

SARS-CoV-2 (COVID-19) Spike RBD antibody [HL1003] detects SARS-CoV-2 (COVID-19) Spike RBD protein by immunofluorescent analysis.
Sample: Mock and transfected 293T cells were fixed in 4% paraformaldehyde at RT for 15 min.
Green: SARS-CoV-2 (COVID-19) Spike RBD stained by SARS-CoV-2 (COVID-19) Spike RBD antibody [HL1003] (GTX635792) diluted at 1:700.
Blue: Fluoroshield with DAPI (GTX30920).



GTX635792 ELISA Image

Sandwich ELISA detection of recombinant SARS-CoV-2 (COVID-19) Spike S1 protein, His tag (active) protein (GTX135817-pro) using SARS-CoV-2 (COVID-19) Spike RBD antibody [HL1014] (GTX635807) as capture antibody at concentration of 5 µg/mL and HRP-conjugated SARS-CoV-2 (COVID-19) Spike RBD antibody [HL1003] (GTX635792) as detection antibody at concentration of 1 µg/mL.
Please notice that GTX635792 needs to be conjugated to HRP to function as the detection antibody when paired with GTX635807. Please contact us for custom HRP-conjugated antibody.



GTX635792 ELISA Image

Sandwich ELISA detection of recombinant full-length SARS-CoV-2 spike (trimer) protein using SARS-CoV-2 (COVID-19) Spike RBD antibody [HL1014] (GTX635807) as capture antibody at concentration of 5 µg/mL and HRP-conjugated SARS-CoV-2 (COVID-19) Spike RBD antibody [HL1003] (GTX635792) as detection antibody at concentration of 1 µg/mL.
Please notice that GTX635792 needs to be conjugated to HRP to function as the detection antibody when paired with GTX635807. Please contact us for custom HRP-conjugated antibody.



For full product information, images and publications, please visit our [website](#).