



SZABO SCANDIC

Part of Europa Biosite

Produktinformation



Forschungsprodukte & Biochemikalien



Zellkultur & Verbrauchsmaterial



Diagnostik & molekulare Diagnostik



Laborgeräte & Service

Weitere Information auf den folgenden Seiten!
See the following pages for more information!



Lieferung & Zahlungsart

siehe unsere [Liefer- und Versandbedingungen](#)

Zuschläge

- Mindermengenzuschlag
- Trockeneiszuschlag
- Gefahrgutzuschlag
- Expressversand

SZABO-SCANDIC HandelsgmbH

Quellenstraße 110, A-1100 Wien

T. +43(0)1 489 3961-0

F. +43(0)1 489 3961-7

mail@szabo-scandic.com

www.szabo-scandic.com

[linkedin.com/company/szaboscandic](https://www.linkedin.com/company/szaboscandic) 

SARS-CoV-2 (COVID-19) Spike RBD antibody [HL1004]

Cat No. GTX635793

| | |
|--------------------|--|
| Host | Rabbit |
| Clonality | Monoclonal |
| Isotype | IgG |
| Application | ICC/IF, ELISA, Neutralizing/Inhibition, Sandwich ELISA |
| Reactivity | SARS Coronavirus 2 |

Package
100 µl, 25 µl

APPLICATION

Application Note

*Optimal dilutions/concentrations should be determined by the researcher.

| Suggested dilution | Dilution |
|-------------------------|-----------------|
| ICC/IF | 1:100-1:1000 |
| ELISA | Assay dependent |
| Neutralizing/Inhibition | Assay dependent |
| Sandwich ELISA | Assay dependent |

Note : This antibody inhibits infection of mammalian cells by live SARS-CoV-2.

Capture : GTX632604 / GTX635807, Detection : GTX635793

Not tested in other applications.

Specificity/Sensitivity This antibody detects SARS-CoV-2 Spike protein, but does not cross-react with SARS-CoV spike protein based on customer's feedback.

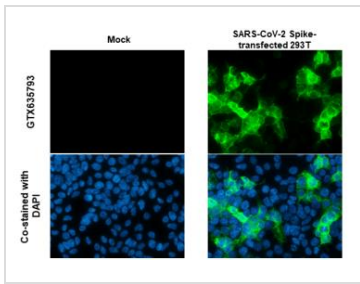
PROPERTIES

| | |
|----------------------|--|
| Form | Liquid |
| Buffer | PBS |
| Storage | Store as concentrated solution. Centrifuge briefly prior to opening vial. For short-term storage (1-2 weeks), store at 4°C. For long-term storage, aliquot and store at -20°C or below. Avoid multiple freeze-thaw cycles. |
| Concentration | 1 mg/ml (Please refer to the vial label for the specific concentration.) |
| Immunogen | Recombinant protein corresponding to SARS-CoV-2 Spike RBD. (SARS-CoV-2 (strain Wuhan-Hu-1)) The exact sequence is proprietary. |
| Purification | Affinity purified by Protein A. |
| Conjugation | Unconjugated |
| Note | For laboratory use only. Not for any clinical, therapeutic, or diagnostic use in humans or animals. Not for animal or human consumption. |



For full product information, images and publications, please visit our [website](#).

DATA IMAGES



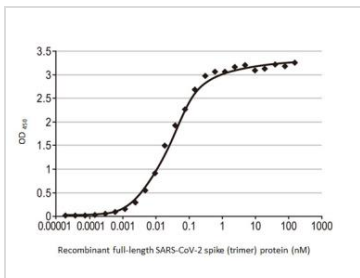
GTX635793 ICC/IF Image

SARS-CoV-2 (COVID-19) Spike RBD antibody [HL1004] detects SARS-CoV-2 (COVID-19) Spike RBD protein by immunofluorescent analysis.

Sample: Mock and transfected 293T cells were fixed in 4% paraformaldehyde at RT for 15 min.

Green: SARS-CoV-2 (COVID-19) Spike RBD stained by SARS-CoV-2 (COVID-19) Spike RBD antibody [HL1004] (GTX635793) diluted at 1:600.

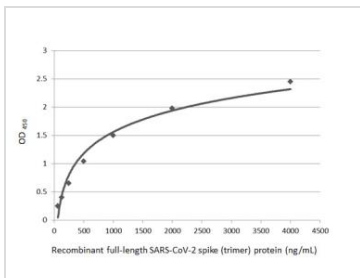
Blue: Fluoroshield with DAPI (GTX30920).



GTX635793 ELISA Image

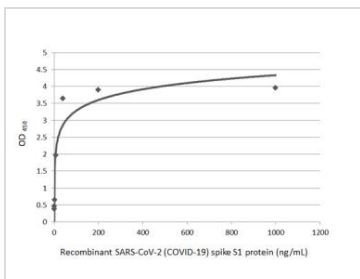
Indirect ELISA analysis performed by coating plate with recombinant full-length SARS-CoV-2 spike (trimer) protein (50 ng). Coated protein probed with SARS-CoV-2 (COVID-19) Spike RBD antibody [HL1004] (GTX635793) ($1.60 \cdot 1.91 \cdot 10^{-5}$ nM). Rabbit IgG antibody (HRP) (GTX213110-01) (1:10000) detected bound primary antibody.

EC50 : 25.13 pM



GTX635793 ELISA Image

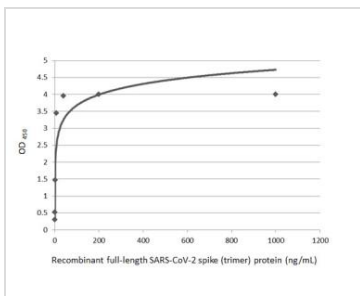
Sandwich ELISA detection of recombinant full-length SARS-CoV-2 spike (trimer) protein using SARS-CoV-2 (COVID-19) spike antibody [1A9] (GTX632604) as capture antibody at concentration of 5 µg/mL and SARS-CoV-2 (COVID-19) Spike RBD antibody [HL1004] (GTX635793) as detection antibody at concentration of 1 µg/mL. Rabbit IgG antibody (HRP) (GTX213110-01) was diluted at 1:10000 and used to detect the primary antibody.



GTX635793 ELISA Image

Sandwich ELISA detection of recombinant SARS-CoV-2 (COVID-19) Spike S1 protein, His tag (active) protein (GTX135817-pro) using SARS-CoV-2 (COVID-19) Spike RBD antibody [HL1014] (GTX635807) as capture antibody at concentration of 5 µg/mL and HRP-conjugated SARS-CoV-2 (COVID-19) Spike RBD antibody [HL1004] (GTX635793) as detection antibody at concentration of 1 µg/mL.

Please notice that GTX635793 needs to be conjugated to HRP to function as the detection antibody when paired with GTX635807. Please contact us for custom HRP-conjugated antibody.



GTX635793 ELISA Image

Sandwich ELISA detection of recombinant full-length SARS-CoV-2 spike (trimer) protein using SARS-CoV-2 (COVID-19) Spike RBD antibody [HL1014] (GTX635807) as capture antibody at concentration of 5 µg/mL and HRP-conjugated SARS-CoV-2 (COVID-19) Spike RBD antibody [HL1004] (GTX635793) as detection antibody at concentration of 1 µg/mL.

Please notice that GTX635793 needs to be conjugated to HRP to function as the detection antibody when paired with GTX635807. Please contact us for custom HRP-conjugated antibody.



For full product information, images and publications, please visit our [website](#).