



# SZABO SCANDIC

Part of Europa Biosite

## Produktinformation



Forschungsprodukte & Biochemikalien



Zellkultur & Verbrauchsmaterial



Diagnostik & molekulare Diagnostik



Laborgeräte & Service

Weitere Information auf den folgenden Seiten!  
See the following pages for more information!



### Lieferung & Zahlungsart

siehe unsere [Liefer- und Versandbedingungen](#)

### Zuschläge

- Mindermengenzuschlag
- Trockeneiszuschlag
- Gefahrgutzuschlag
- Expressversand

### SZABO-SCANDIC HandelsgmbH

Quellenstraße 110, A-1100 Wien

T. +43(0)1 489 3961-0

F. +43(0)1 489 3961-7

[mail@szabo-scandic.com](mailto:mail@szabo-scandic.com)

[www.szabo-scandic.com](http://www.szabo-scandic.com)

[linkedin.com/company/szaboscandic](https://www.linkedin.com/company/szaboscandic) 

## SARS-CoV-2 (COVID-19) nucleocapsid antibody [GT113]

**Cat No. GTX635808**

<b>Host</b>	Mouse
<b>Clonality</b>	Monoclonal
<b>Isotype</b>	IgG2b
<b>Application</b>	WB, ELISA, Sandwich ELISA
<b>Reactivity</b>	SARS Coronavirus 2

**Package**  
100 µl, 25 µl

## APPLICATION

**Application Note**

\*Optimal dilutions/concentrations should be determined by the researcher.

Suggested dilution	Dilution
WB	1:1000-1:10000
ELISA	Assay dependent
Sandwich ELISA	Assay dependent

**Note : Capture: GTX6353808, Detection: GTX635689**

Not tested in other applications.

**Specificity/Sensitivity** This antibody detects SARS-CoV-2 nucleocapsid protein, but does not cross-react with SARS-CoV or MERS-CoV nucleocapsid proteins based on our internal testing.

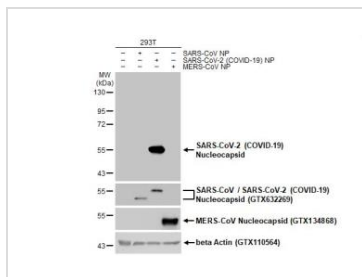
## PROPERTIES

<b>Form</b>	Liquid
<b>Buffer</b>	PBS
<b>Storage</b>	Store as concentrated solution. Centrifuge briefly prior to opening vial. For short-term storage (1-2 weeks), store at 4°C. For long-term storage, aliquot and store at -20°C or below. Avoid multiple freeze-thaw cycles.
<b>Concentration</b>	1 mg/ml (Please refer to the vial label for the specific concentration.)
<b>Immunogen</b>	Full length SARS-CoV-2 (COVID-19) nucleocapsid protein. (SARS-CoV-2 (strain Wuhan-Hu-1))
<b>Purification</b>	Affinity purified by Protein A.
<b>Conjugation</b>	Unconjugated
<b>Note</b>	For laboratory use only. Not for any clinical, therapeutic, or diagnostic use in humans or animals. Not for animal or human consumption.



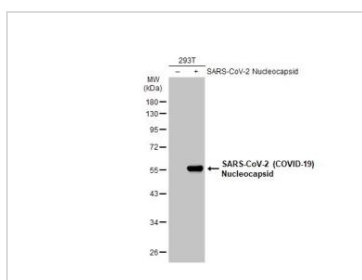
For full product information, images and publications, please visit our [website](#).

DATA IMAGES



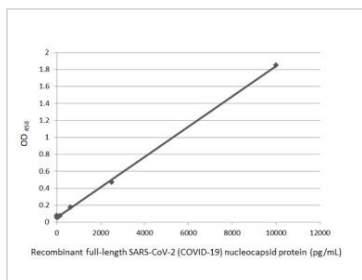
**GTX635808 WB Image**

Non-transfected (-) and transfected (+) 293T whole cell extracts (30 µg) were separated by 10% SDS-PAGE, and the membrane was blotted with SARS-CoV-2 (COVID-19) nucleocapsid antibody [GT113] (GTX635808) diluted at 1:5000. The HRP-conjugated anti-mouse IgG antibody (GTX213111-01) was used to detect the primary antibody.



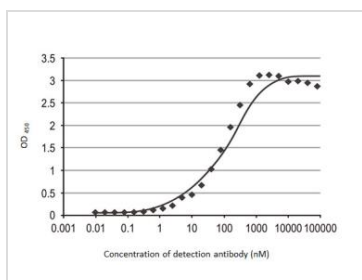
**GTX635808 WB Image**

Non-transfected (-) and transfected (+) 293T whole cell extracts (30 µg) were separated by 10% SDS-PAGE, and the membrane was blotted with SARS-CoV-2 (COVID-19) nucleocapsid antibody [GT113] (GTX635808) diluted at 1:5000. The HRP-conjugated anti-mouse IgG antibody (GTX213111-01) was used to detect the primary antibody.



**GTX635808 ELISA Image**

Sandwich ELISA detection of recombinant full-length SARS-CoV-2 (COVID-19) nucleocapsid protein, His tag protein (GTX135592-pro) using SARS-CoV-2 (COVID-19) nucleocapsid antibody [GT113] (GTX635808) as capture antibody at concentration of 5 µg/mL and HRP-conjugated SARS-CoV-2 (COVID-19) nucleocapsid antibody [HL5511] (GTX635689) as detection antibody at concentration of 1 µg/mL. Sensitivity : 39.06 pg/mL



**GTX635808 ELISA Image**

Indirect ELISA analysis performed by coating plate with recombinant full-length SARS-CoV-2 (COVID-19) nucleocapsid protein, His tag protein (GTX135592-pro) (50 ng). Coated protein probed with SARS-CoV-2 (COVID-19) nucleocapsid antibody [GT113] (GTX635808) ( $8 \times 10^3$ - $9.5 \times 10^{-3}$  nM). Rabbit IgG antibody (HRP) (GTX213110-01) (1:10000) detected bound primary antibody. EC50 : 82.34 nM



For full product information, images and publications, please visit our [website](http://www.genetex.com).