



SZABO SCANDIC

Part of Europa Biosite

Produktinformation



Forschungsprodukte & Biochemikalien



Zellkultur & Verbrauchsmaterial



Diagnostik & molekulare Diagnostik



Laborgeräte & Service

Weitere Information auf den folgenden Seiten!
See the following pages for more information!



Lieferung & Zahlungsart

siehe unsere [Liefer- und Versandbedingungen](#)

Zuschläge

- Mindermengenzuschlag
- Trockeneiszuschlag
- Gefahrgutzuschlag
- Expressversand

SZABO-SCANDIC HandelsgmbH

Quellenstraße 110, A-1100 Wien

T. +43(0)1 489 3961-0

F. +43(0)1 489 3961-7

mail@szabo-scandic.com

www.szabo-scandic.com

[linkedin.com/company/szaboscandic](https://www.linkedin.com/company/szaboscandic) 

Myelin basic protein antibody [HL1033]

Cat. No. GTX635873

Host	Rabbit
Clonality	Monoclonal
Isotype	IgG
Application	WB, ICC/IF, IHC-P, IHC-Fr
Reactivity	Human, Mouse, Rat

Reference (1)

Package

100 µl, 25 µl

APPLICATION

Application Note

*Optimal dilutions/concentrations should be determined by the researcher.

Suggested dilution	Recommended dilution
WB	1:5000-1:500000
ICC/IF	Assay dependent
IHC-P	Assay dependent
IHC-Fr	Assay dependent

Not tested in other applications.

Calculated MW 27 kDa. ([Note](#))

PROPERTIES

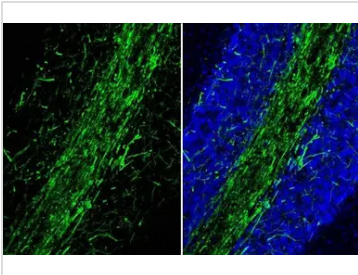
Form	Liquid
Buffer	PBS
Preservative	No preservative
Storage	Store as concentrated solution. Centrifuge briefly prior to opening vial. For short-term storage (1-2 weeks), store at 4°C. For long-term storage, aliquot and store at -20°C or below. Avoid multiple freeze-thaw cycles.
Concentration	1 mg/ml (Please refer to the vial label for the specific concentration.)
Immunogen	Carrier-protein conjugated synthetic peptide encompassing a sequence within the C-terminus region of mouse Myelin basic Protein. The exact sequence is proprietary.
Purification	Affinity purified by Protein A.
Conjugation	Unconjugated

For full product information, images and publications, please visit our [website](#).

For laboratory research use only. Not for any clinical, therapeutic, or diagnostic use in humans or animals. Not for animal or human consumption.

Note
 Purchasers shall not, and agree not to enable third parties to, analyze, copy, reverse engineer or otherwise attempt to determine the structure or sequence of the product.

DATA IMAGES

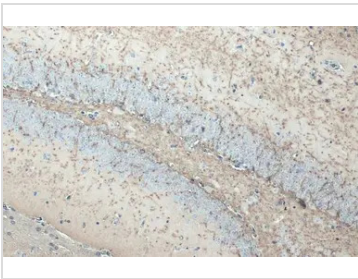


GTX635873 IHC-Fr Image

Myelin basic protein antibody [HL1033] detects Myelin basic protein protein by immunohistochemical analysis.

Sample: Frozen-sectioned mouse cerebellum.

Green: Myelin basic protein stained by Myelin basic protein antibody [HL1033] (GTX635873) diluted at 1:100.

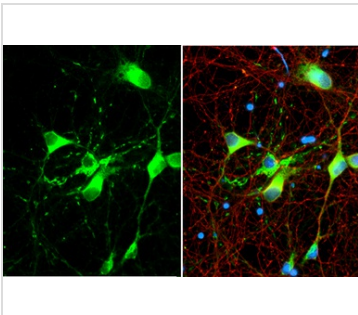


GTX635873 IHC-P Image

Myelin basic Protein antibody [HL1033] detects Myelin basic Protein protein at cell membrane by immunohistochemical analysis.

Sample: Paraffin-embedded mouse brain.

Myelin basic Protein stained by Myelin basic Protein antibody [HL1033] (GTX635873) diluted at 1:200.
 Antigen Retrieval: Citrate buffer, pH 6.0, 15 min



GTX635873 ICC/IF Image

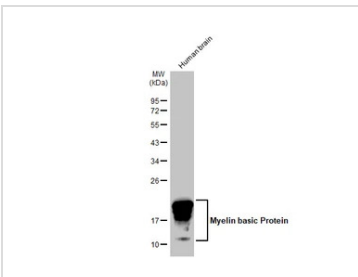
Myelin basic Protein antibody [HL1033] detects Myelin basic Protein protein by immunofluorescent analysis.

Sample: DIV9 rat cortical neuron and Glia cell cells were fixed in 4% paraformaldehyde at RT for 15 min.

Green: Myelin basic Protein stained by Myelin basic Protein antibody [HL1033] (GTX635873) diluted at 1:250.

Red: Tau, a Axon marker, stained by Tau antibody [GT287] (GTX634809) diluted at 1:500.

Blue: Fluoroshield with DAPI (GTX30920).



GTX635873 WB Image

Human tissue extract (30 µg) was separated by 12% SDS-PAGE, and the membrane was blotted with Myelin basic Protein antibody [HL1033] (GTX635873) diluted at 1:10000. The HRP-conjugated anti-rabbit IgG antibody (GTX213110-01) was used to detect the primary antibody.



For full product information, images and publications, please visit our [website](#).