



SZABO SCANDIC

Part of Europa Biosite

Produktinformation



Forschungsprodukte & Biochemikalien



Zellkultur & Verbrauchsmaterial



Diagnostik & molekulare Diagnostik



Laborgeräte & Service

Weitere Information auf den folgenden Seiten!
See the following pages for more information!



Lieferung & Zahlungsart

siehe unsere [Liefer- und Versandbedingungen](#)

Zuschläge

- Mindermengenzuschlag
- Trockeneiszuschlag
- Gefahrgutzuschlag
- Expressversand

SZABO-SCANDIC HandelsgmbH

Quellenstraße 110, A-1100 Wien

T. +43(0)1 489 3961-0

F. +43(0)1 489 3961-7

mail@szabo-scandic.com

www.szabo-scandic.com

[linkedin.com/company/szaboscandic](https://www.linkedin.com/company/szaboscandic) 

Apolipoprotein E antibody [GT27711]

Cat. No. GTX635889

Host	Mouse
Clonality	Monoclonal
Isotype	IgG2a
Application	WB, IP, ELISA, Sandwich ELISA
Reactivity	Human, Rat

★★★★★ Review (2)

Package
100 µl, 25 µl

APPLICATION

Application Note

*Optimal dilutions/concentrations should be determined by the researcher.

Suggested dilution	Recommended dilution
WB	Assay dependent
IP	Assay dependent
ELISA	Assay dependent
Sandwich ELISA	Assay dependent

Note : Capture : GTX635889 / GTX635891, Detection : GTX100053

Not tested in other applications.

Calculated MW 36 kDa. ([Note](#))

PROPERTIES

Form	Liquid
Buffer	PBS, 20% Glycerol
Preservative	No Preservative
Storage	Store as concentrated solution. Centrifuge briefly prior to opening vial. For short-term storage (1-2 weeks), store at 4°C. For long-term storage, aliquot and store at -20°C or below. Avoid multiple freeze-thaw cycles.
Concentration	1 mg/ml (Please refer to the vial label for the specific concentration.)
Immunogen	Recombinant protein encompassing a sequence within the center region of human Apolipoprotein E. The exact sequence is proprietary.
Purification	Affinity purified by Protein A.
Conjugation	Unconjugated

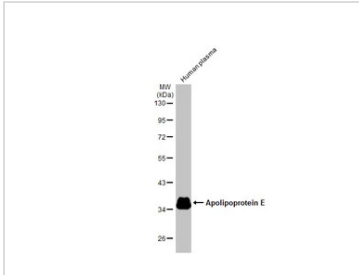


For full product information, images and publications, please visit our [website](#).

For laboratory research use only. Not for any clinical, therapeutic, or diagnostic use in humans or animals. Not for animal or human consumption.

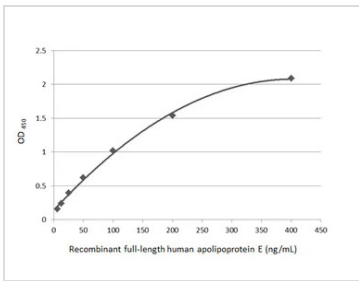
Note
 Purchasers shall not, and agree not to enable third parties to, analyze, copy, reverse engineer or otherwise attempt to determine the structure or sequence of the product.

DATA IMAGES



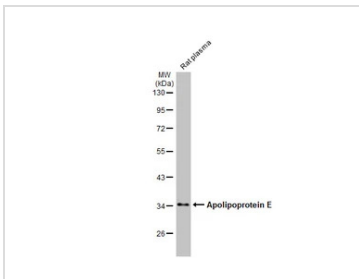
GTX635889 WB Image

Human plasma (30 µg) was separated by 10% SDS-PAGE, and the membrane was blotted with Apolipoprotein E antibody [GT27711] (GTX635889) diluted at 1:25000. The HRP-conjugated anti-mouse IgG antibody (GTX213111-01) was used to detect the primary antibody.



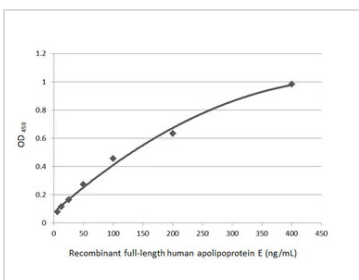
GTX635889 ELISA Image

Sandwich ELISA detection of recombinant full-length human apolipoprotein E using Apolipoprotein E antibody [GT27711] (GTX635889) as capture antibody at concentration of 5 µg/mL and Apolipoprotein E antibody [C2C3], C-term (GTX100053) as detection antibody at concentration of 1 µg/mL. Rabbit IgG antibody (HRP) (GTX213110-01) was diluted at 1:10000 and used to detect the primary antibody.



GTX635889 WB Image

Rat plasma (50 µg) was separated by 10% SDS-PAGE, and the membrane was blotted with Apolipoprotein E antibody [GT27711] (GTX635889) diluted at 1:25000. The HRP-conjugated anti-mouse IgG antibody (GTX213111-01) was used to detect the primary antibody.



GTX635889 ELISA Image

Indirect ELISA analysis performed by coating plate with recombinant full-length human apolipoprotein E (400-6.25 ng/mL). Coated protein was probed with Apolipoprotein E antibody [GT27711] (GTX635889) (1 µg/mL). Mouse IgG antibody (HRP) (GTX213111-01) (1:10000) was used to detect bound primary antibody.



For full product information, images and publications, please visit our [website](#).