



SZABO SCANDIC

Part of Europa Biosite

Produktinformation



Forschungsprodukte & Biochemikalien



Zellkultur & Verbrauchsmaterial



Diagnostik & molekulare Diagnostik



Laborgeräte & Service

Weitere Information auf den folgenden Seiten!
See the following pages for more information!



Lieferung & Zahlungsart

siehe unsere [Liefer- und Versandbedingungen](#)

Zuschläge

- Mindermengenzuschlag
- Trockeneiszuschlag
- Gefahrgutzuschlag
- Expressversand

SZABO-SCANDIC HandelsgmbH

Quellenstraße 110, A-1100 Wien

T. +43(0)1 489 3961-0

F. +43(0)1 489 3961-7

mail@szabo-scandic.com

www.szabo-scandic.com

[linkedin.com/company/szaboscandic](https://www.linkedin.com/company/szaboscandic) 

ACE2 antibody [GT19410]

Cat. No. GTX635897

Host	Mouse
Clonality	Monoclonal
Isotype	IgG2b
Application	WB, ICC/IF, IHC-P, ELISA, Lateral Flow, Sandwich ELISA
Reactivity	Human, Mouse, Monkey

★★★★★ Review (1)

Package
100 µl, 25 µl

APPLICATION

Application Note

*Optimal dilutions/concentrations should be determined by the researcher.

Suggested dilution	Recommended dilution
WB	Assay dependent
ICC/IF	Assay dependent
IHC-P	1:100-1:1000
ELISA	Assay dependent
Lateral Flow	Assay dependent
Sandwich ELISA	Assay dependent

Note : Capture : GTX635897 , Detection : GTX628914-01

Not tested in other applications.

Calculated MW 92 kDa. ([Note](#))

PROPERTIES

Form	Liquid
Buffer	PBS
Preservative	No Preservative
Storage	Store as concentrated solution. Centrifuge briefly prior to opening vial. For short-term storage (1-2 weeks), store at 4°C. For long-term storage, aliquot and store at -20°C or below. Avoid multiple freeze-thaw cycles.
Concentration	0.55 mg/ml (Please refer to the vial label for the specific concentration.)
Immunogen	Recombinant protein encompassing a sequence within the center region of human ACE2. The exact sequence is proprietary.
Purification	Affinity purified by Protein A
Conjugation	Unconjugated

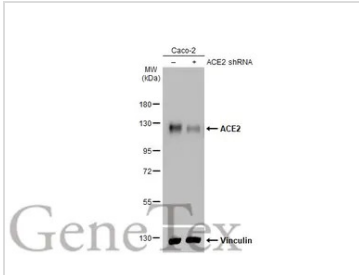


For full product information, images and publications, please visit our [website](#).

For laboratory research use only. Not for any clinical, therapeutic, or diagnostic use in humans or animals. Not for animal or human consumption.

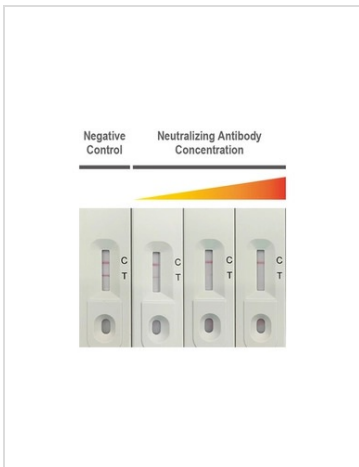
Note
 Purchasers shall not, and agree not to enable third parties to, analyze, copy, reverse engineer or otherwise attempt to determine the structure or sequence of the product.

DATA IMAGES



GTX635897 WB Image

Non-transfected (-) and transfected (+) Caco-2 whole cell extracts (30 µg) were separated by 7.5% SDS-PAGE, and the membrane was blotted with ACE2 antibody [GT19410] (GTX635897) diluted at 1:1000. The HRP-conjugated anti-mouse IgG antibody (GTX213111-01) was used to detect the primary antibody.



GTX635897 Lateral Flow Image

SARS-CoV-2 neutralizing antibody interferes with the binding of ACE2 and spike RBD proteins. The signal intensity of the test line (T) decreases due to competition by the neutralizing antibody, while the control line (C) demonstrates a valid test.

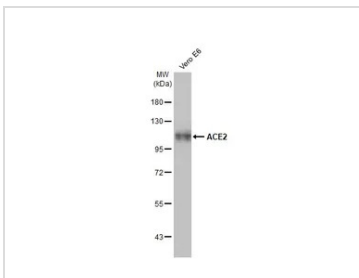
Neutralizing Antibody: Spike RBD antibody [HL1002] (GTX635791)

C Line:

Detector: Colloidal gold-conjugated human ACE2 (ECO) protein (GTX135683-pro) / **Capture:** Anti-human ACE2 antibody (GTX635897)

T Line:

Detector: Colloidal gold-conjugated human ACE2 (ECO) protein (GTX135683-pro) / **Capture:** SARS-CoV-2 Spike RBD protein



GTX635897 WB Image

Whole cell extract (30 µg) was separated by 7.5% SDS-PAGE, and the membrane was blotted with ACE2 antibody [GT19410] (GTX635897) diluted at 1:1000. The HRP-conjugated anti-mouse IgG antibody (GTX213111-01) was used to detect the primary antibody.



For full product information, images and publications, please visit our [website](#).