



SZABO SCANDIC

Part of Europa Biosite

Produktinformation



Forschungsprodukte & Biochemikalien



Zellkultur & Verbrauchsmaterial



Diagnostik & molekulare Diagnostik



Laborgeräte & Service

Weitere Information auf den folgenden Seiten!
See the following pages for more information!



Lieferung & Zahlungsart

siehe unsere [Liefer- und Versandbedingungen](#)

Zuschläge

- Mindermengenzuschlag
- Trockeneiszuschlag
- Gefahrgutzuschlag
- Expressversand

SZABO-SCANDIC HandelsgmbH

Quellenstraße 110, A-1100 Wien

T. +43(0)1 489 3961-0

F. +43(0)1 489 3961-7

mail@szabo-scandic.com

www.szabo-scandic.com

[linkedin.com/company/szaboscandic](https://www.linkedin.com/company/szaboscandic)

SARS-CoV-2 (COVID-19) Spike S2 / S2' antibody [HL1039]

Cat. No. GTX635911

Host	Rabbit
Clonality	Monoclonal
Isotype	IgG
Application	WB, ICC/IF, ELISA, Sandwich ELISA, IHC-P (cell pellet)
Reactivity	SARS Coronavirus 2

Package
100 µl, 25 µl

APPLICATION

Application Note

*Optimal dilutions/concentrations should be determined by the researcher.

Suggested dilution	Recommended dilution
WB	1:5000-1:100000
ICC/IF	Assay dependent
ELISA	Assay dependent
Sandwich ELISA	Assay dependent
IHC-P (cell pellet)	Assay dependent

Note : Capture : GTX632604 / GTX636037 , Detection : GTX635911

Not tested in other applications.

Product Note

This antibody detects SARS-CoV-2 Spike protein, but does not cross-react with SARS-CoV or MERS-CoV spike proteins based on our internal testing.

PROPERTIES

Form	Liquid
Buffer	PBS
Preservative	No Preservative
Storage	Store as concentrated solution. Centrifuge briefly prior to opening vial. For short-term storage (1-2 weeks), store at 4°C. For long-term storage, aliquot and store at -20°C or below. Avoid multiple freeze-thaw cycles.
Concentration	1 mg/ml (Please refer to the vial label for the specific concentration.)
Immunogen	Recombinant protein encompassing a sequence within the extracellular domain of SARS-CoV-2 (COVID-19) Spike S2. The exact sequence is proprietary.
Purification	Affinity purified by Protein A.
Conjugation	Unconjugated



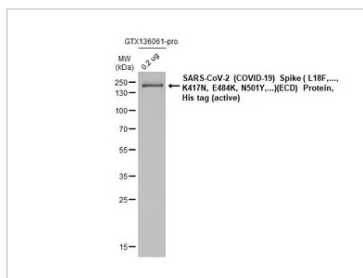
For full product information, images and publications, please visit our [website](#).

For laboratory research use only. Not for any clinical, therapeutic, or diagnostic use in humans or animals. Not for animal or human consumption.

Note

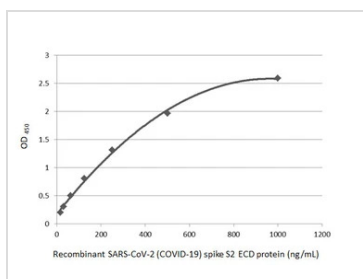
Purchasers shall not, and agree not to enable third parties to, analyze, copy, reverse engineer or otherwise attempt to determine the structure or sequence of the product.

DATA IMAGES



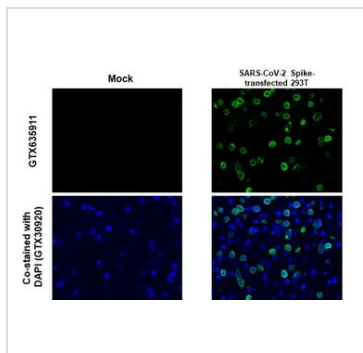
GTX635911 WB Image

SARS-CoV-2 (COVID-19) Spike (L18F..., K417N, E484K, N501Y,...)(ECD) Protein, His tag (active) (GTX136061-pro, 0.2 µg) was separated by 12% SDS-PAGE, and the membrane was blotted with SARS-CoV-2 (COVID-19) Spike S2 / S2' antibody [HL1039] (GTX635911) diluted at 1:140000. The HRP-conjugated anti-rabbit IgG antibody (GTX213110-01) was used to detect the primary antibody.



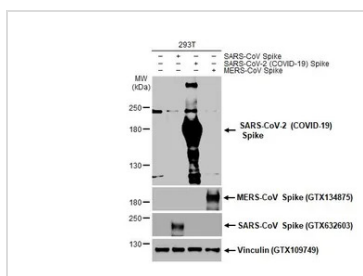
GTX635911 ELISA Image

Sandwich ELISA detection of recombinant SARS-CoV-2 (COVID-19) Spike S2 (ECD) protein, human IgG Fc tag (GTX01559-pro) using SARS-CoV / SARS-CoV-2 (COVID-19) spike antibody [1A9] (GTX632604) as capture antibody at concentration of 5 µg/mL and SARS-CoV-2 (COVID-19) Spike S2 antibody [HL1039] (GTX635911) as detection antibody at concentration of 1 µg/mL. Rabbit IgG antibody (HRP) (GTX213110-01) was diluted at 1:10000 and used to detect the primary antibody.



GTX635911 IHC-P (cell pellet) Image

SARS-CoV-2 (COVID-19) Spike S2 / S2' antibody [HL1039] detects SARS-CoV-2 (COVID-19) Spike S2 / S2' protein at cytoplasm by immunohistochemical analysis.
 Sample: Mock (GTX435670) and SARS-CoV-2 (COVID-19) Spike transfected 293T cell FFPE Cell Pellet Block (GTX435640).
 Green: SARS-CoV-2 (COVID-19) Spike S2 / S2' stained by SARS-CoV-2 (COVID-19) Spike S2 / S2' antibody [HL1039] (GTX635911) diluted at 1:1000.
 Blue: Fluoroshield with DAPI (GTX30920).
 Antigen Retrieval: Citrate buffer, pH 6.0, 15 min



GTX635911 WB Image

Non-transfected (-) and transfected (+) 293T whole cell extracts (30 µg) were separated by 5% SDS-PAGE, and the membrane was blotted with SARS-CoV-2 (COVID-19) Spike S2 antibody [HL1039] (GTX635911) diluted at 1:20000. The HRP-conjugated anti-rabbit IgG antibody (GTX213110-01) was used to detect the primary antibody.



For full product information, images and publications, please visit our [website](#).