



SZABO SCANDIC

Part of Europa Biosite

Produktinformation



Forschungsprodukte & Biochemikalien



Zellkultur & Verbrauchsmaterial



Diagnostik & molekulare Diagnostik



Laborgeräte & Service

Weitere Information auf den folgenden Seiten!
See the following pages for more information!



Lieferung & Zahlungsart

siehe unsere [Liefer- und Versandbedingungen](#)

Zuschläge

- Mindermengenzuschlag
- Trockeneiszuschlag
- Gefahrgutzuschlag
- Expressversand

SZABO-SCANDIC HandelsgmbH

Quellenstraße 110, A-1100 Wien

T. +43(0)1 489 3961-0

F. +43(0)1 489 3961-7

mail@szabo-scandic.com

www.szabo-scandic.com

[linkedin.com/company/szaboscandic](https://www.linkedin.com/company/szaboscandic) 

EpCAM antibody [GT3188]

Cat. No. GTX635970

Host	Mouse
Clonality	Monoclonal
Isotype	IgG2a
Application	WB, ICC/IF, IHC-P, FACS
Reactivity	Human

Package
100 µl, 25 µl

APPLICATION

Application Note

*Optimal dilutions/concentrations should be determined by the researcher.

Suggested dilution	Recommended dilution
WB	1:500-1:3000
ICC/IF	1:100-1:1000
IHC-P	Assay dependent
FACS	Assay dependent

Not tested in other applications.

Calculated MW	35 kDa. (Note)
Product Note	We do not recommend use of this product for Mouse samples.

PROPERTIES

Form	Liquid
Buffer	PBS, 20% Glycerol
Preservative	No Preservative
Storage	Store as concentrated solution. Centrifuge briefly prior to opening vial. For short-term storage (1-2 weeks), store at 4°C. For long-term storage, aliquot and store at -20°C or below. Avoid multiple freeze-thaw cycles.
Concentration	1 mg/ml (Please refer to the vial label for the specific concentration.)
Immunogen	Recombinant protein encompassing a sequence within the center region of human EpCAM. The exact sequence is proprietary.
Purification	Affinity purified by Protein A.
Conjugation	Unconjugated



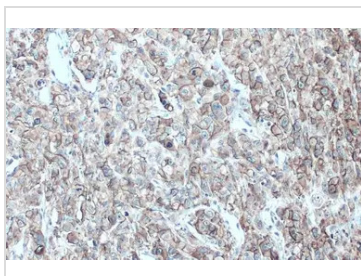
For full product information, images and publications, please visit our [website](#).

For laboratory research use only. Not for any clinical, therapeutic, or diagnostic use in humans or animals. Not for animal or human consumption.

Note

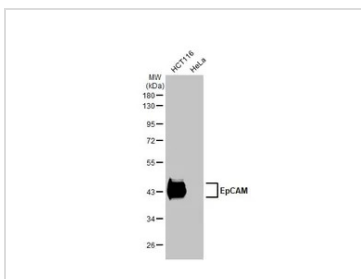
Purchasers shall not, and agree not to enable third parties to, analyze, copy, reverse engineer or otherwise attempt to determine the structure or sequence of the product.

DATA IMAGES



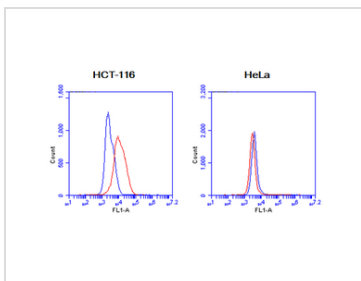
GTX635970 IHC-P Image

EpCAM antibody [GT3188] detects EpCAM protein at cell membrane by immunohistochemical analysis.
 Sample: Paraffin-embedded MDA-MB-231 xenograft.
 EpCAM stained by EpCAM antibody [GT3188] (GTX635970) diluted at 1:200.
 Antigen Retrieval: Citrate buffer, pH 6.0, 15 min



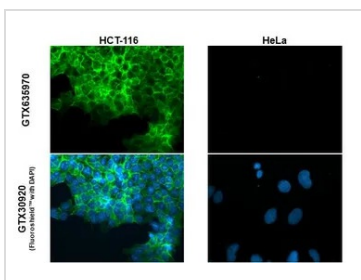
GTX635970 WB Image

Various whole cell extracts (30 µg) were separated by 10% SDS-PAGE, and the membrane was blotted with EpCAM antibody[GT3188] (GTX635970) diluted at 1:1000. The HRP-conjugated anti-mouse IgG antibody (GTX213111-01) was used to detect the primary antibody.



GTX635970 FACS Image

EpCAM antibody[GT3188] (GTX635970) detects EpCAM by flow cytometry analysis.
 Sample: HeLa and HCT-116
 Blue: Mouse IgG isotype control.
 Red: EpCAM antibody[GT3188] (GTX635970) dilution: 1:50.
 Acquisition of 20,000 events were collected for FACS analysis.
 HCT116 (EpCAM positive), HeLa (EpCAM negative)



GTX635970 ICC/IF Image

EpCAM antibody [GT3188] detects EpCAM protein at cell membrane by immunofluorescent analysis.
 Sample: HCT116 and HeLa cells were fixed in ice-cold MeOH for 5 min.
 Green: EpCAM stained by EpCAM antibody [GT3188] (GTX635970) diluted at 1:500.



For full product information, images and publications, please visit our [website](#).