



# SZABO SCANDIC

Part of Europa Biosite

## Produktinformation



Forschungsprodukte & Biochemikalien



Zellkultur & Verbrauchsmaterial



Diagnostik & molekulare Diagnostik



Laborgeräte & Service

Weitere Information auf den folgenden Seiten!  
See the following pages for more information!



### Lieferung & Zahlungsart

siehe unsere [Liefer- und Versandbedingungen](#)

### Zuschläge

- Mindermengenzuschlag
- Trockeneiszuschlag
- Gefahrgutzuschlag
- Expressversand

### SZABO-SCANDIC HandelsgmbH

Quellenstraße 110, A-1100 Wien

T. +43(0)1 489 3961-0

F. +43(0)1 489 3961-7

[mail@szabo-scandic.com](mailto:mail@szabo-scandic.com)

[www.szabo-scandic.com](http://www.szabo-scandic.com)

[linkedin.com/company/szaboscandic](https://www.linkedin.com/company/szaboscandic) 

## RPB2 antibody [HL1043]

Cat. No. GTX635977

<b>Host</b>	Rabbit
<b>Clonality</b>	Monoclonal
<b>Isotype</b>	IgG
<b>Application</b>	WB, IHC-P, IHC-Wm
<b>Reactivity</b>	Human, Mouse, Rat, Zebrafish, Cat, Dog

**Package**  
100 µl, 25 µl

## APPLICATION

**Application Note**

\*Optimal dilutions/concentrations should be determined by the researcher.

Suggested dilution	Recommended dilution
WB	1:500-1:3000
IHC-P	Assay dependent
IHC-Wm	Assay dependent

Not tested in other applications.

**Calculated MW** 134 kDa. ([Note](#))

## PROPERTIES

<b>Form</b>	Liquid
<b>Buffer</b>	PBS
<b>Preservative</b>	No Preservative
<b>Storage</b>	Store as concentrated solution. Centrifuge briefly prior to opening vial. For short-term storage (1-2 weeks), store at 4°C. For long-term storage, aliquot and store at -20°C or below. Avoid multiple freeze-thaw cycles.
<b>Concentration</b>	1 mg/ml (Please refer to the vial label for the specific concentration.)
<b>Immunogen</b>	Recombinant protein encompassing a sequence within the N-terminus region of human RPB2. The exact sequence is proprietary.
<b>Purification</b>	Affinity purified by Protein A.
<b>Conjugation</b>	Unconjugated

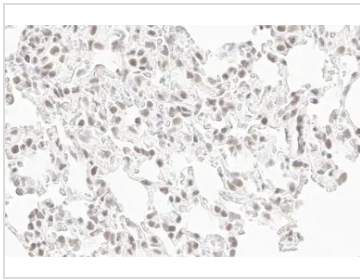
**Note** For laboratory research use only. Not for any clinical, therapeutic, or diagnostic use in humans or animals. Not for animal or human consumption.

Purchasers shall not, and agree not to enable third parties to, analyze, copy, reverse engineer or otherwise attempt to determine the structure or sequence of the product.



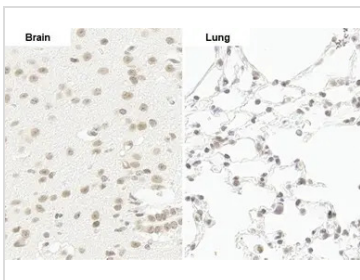
For full product information, images and publications, please visit our [website](#).

DATA IMAGES



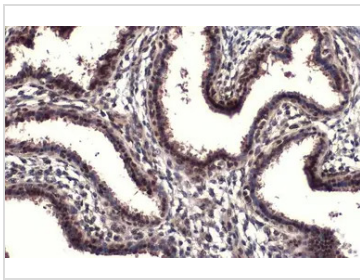
**GTX635977 IHC-P Image**

RPB2 antibody [HL1043] detects RPB2 protein by immunohistochemical analysis.  
 Sample: Paraffin-embedded rat lung.  
 RPB2 stained by RPB2 antibody [HL1043] (GTX635977) diluted at 1:100.  
 Antigen Retrieval: Citrate buffer, pH 6.0, 15 min



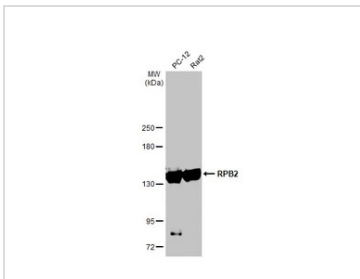
**GTX635977 IHC-P Image**

RPB2 antibody [HL1043] detects RPB2 protein by immunohistochemical analysis.  
 Sample: Paraffin-embedded mouse tissue.  
 RPB2 stained by RPB2 antibody [HL1043] (GTX635977) diluted at 1:100.  
 Antigen Retrieval: Citrate buffer, pH 6.0, 15 min



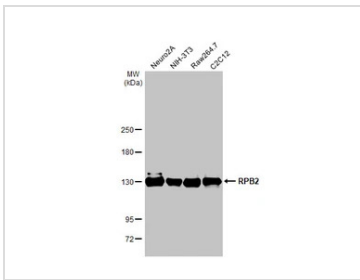
**GTX635977 IHC-P Image**

RPB2 antibody [HL1043] detects RPB2 protein at nucleus by immunohistochemical analysis.  
 Sample: Paraffin-embedded human breast carcinoma.  
 RPB2 stained by RPB2 antibody [HL1043] (GTX635977) diluted at 1:100.  
 Antigen Retrieval: Citrate buffer, pH 6.0, 15 min



**GTX635977 WB Image**

Various whole cell extracts (30 µg) were separated by 5% SDS-PAGE, and the membrane was blotted with RPB2 antibody [HL1043] (GTX635977) diluted at 1:1000. The HRP-conjugated anti-rabbit IgG antibody (GTX213110-01) was used to detect the primary antibody.



**GTX635977 WB Image**

Various whole cell extracts (30 µg) were separated by 5% SDS-PAGE, and the membrane was blotted with RPB2 antibody [HL1043] (GTX635977) diluted at 1:1000. The HRP-conjugated anti-rabbit IgG antibody (GTX213110-01) was used to detect the primary antibody.



For full product information, images and publications, please visit our [website](#).