



# SZABO SCANDIC

Part of Europa Biosite

## Produktinformation



Forschungsprodukte & Biochemikalien



Zellkultur & Verbrauchsmaterial



Diagnostik & molekulare Diagnostik



Laborgeräte & Service

Weitere Information auf den folgenden Seiten!  
See the following pages for more information!



### Lieferung & Zahlungsart

siehe unsere [Liefer- und Versandbedingungen](#)

### Zuschläge

- Mindermengenzuschlag
- Trockeneiszuschlag
- Gefahrgutzuschlag
- Expressversand

### SZABO-SCANDIC HandelsgmbH

Quellenstraße 110, A-1100 Wien

T. +43(0)1 489 3961-0

F. +43(0)1 489 3961-7

[mail@szabo-scandic.com](mailto:mail@szabo-scandic.com)

[www.szabo-scandic.com](http://www.szabo-scandic.com)

[linkedin.com/company/szaboscandic](https://www.linkedin.com/company/szaboscandic) 

## SARS-CoV-2 (COVID-19) Spike S2 antibody [GT8110]

**Cat. No. GTX636038**

<b>Host</b>	Mouse
<b>Clonality</b>	Monoclonal
<b>Isotype</b>	IgG2a
<b>Application</b>	WB, ELISA, Sandwich ELISA, IHC-P (cell pellet)
<b>Reactivity</b>	SARS Coronavirus 2

**Package**  
100 µl, 25 µl

## APPLICATION

**Application Note**

\*Optimal dilutions/concentrations should be determined by the researcher.

Suggested dilution	Recommended dilution
WB	1:5000-1:1000000
ELISA	Assay dependent
Sandwich ELISA	Assay dependent
IHC-P (cell pellet)	Assay dependent

**Note : Capture : GTX636038 , Detection : GTX635910**

Not tested in other applications.

## PROPERTIES

<b>Form</b>	Liquid
<b>Buffer</b>	PBS
<b>Preservative</b>	No Preservative
<b>Storage</b>	Store as concentrated solution. Centrifuge briefly prior to opening vial. For short-term storage (1-2 weeks), store at 4°C. For long-term storage, aliquot and store at -20°C or below. Avoid multiple freeze-thaw cycles.
<b>Concentration</b>	1 mg/ml (Please refer to the vial label for the specific concentration.)
<b>Immunogen</b>	Recombinant protein encompassing a sequence within the extracellular domain of SARS-CoV-2 (COVID-19) Spike S2. The exact sequence is proprietary.
<b>Purification</b>	Affinity purified by Protein G.
<b>Conjugation</b>	Unconjugated

**Note**

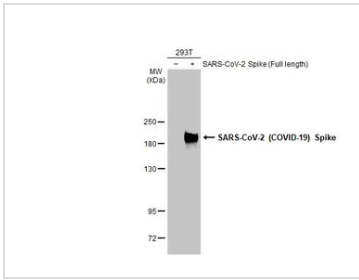
For laboratory research use only. Not for any clinical, therapeutic, or diagnostic use in humans or animals. Not for animal or human consumption.

Purchasers shall not, and agree not to enable third parties to, analyze, copy, reverse engineer or otherwise attempt to determine the structure or sequence of the product.



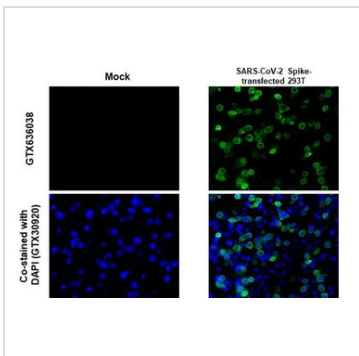
For full product information, images and publications, please visit our [website](#).

DATA IMAGES



**GTX636038 WB Image**

Non-transfected (-) and transfected (+) 293T whole cell extracts (30 µg) were separated by 5% SDS-PAGE, and the membrane was blotted with SARS-CoV-2 (COVID-19) Spike S2 antibody [GT8110] (GTX636038) diluted at 1:1000000. The HRP-conjugated anti-mouse IgG antibody (GTX213111-01) was used to detect the primary antibody.



**GTX636038 IHC-P (cell pellet) Image**

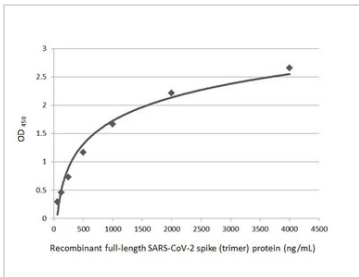
SARS-CoV-2 (COVID-19) Spike S2 antibody [GT8110] detects SARS-CoV-2 (COVID-19) Spike S2 protein at cytoplasm by immunohistochemical analysis.

Sample: Mock (GTX435670) and SARS-CoV-2 (COVID-19) Spike transfected 293T cell FFPE Cell Pellet Block (GTX435640).

Green: SARS-CoV-2 (COVID-19) Spike S2 stained by SARS-CoV-2 (COVID-19) Spike S2 antibody [GT8110] (GTX636038) diluted at 1:1000.

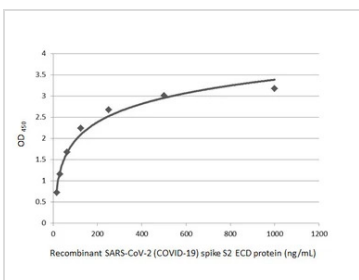
Blue: Fluoroshield with DAPI (GTX30920).

Antigen Retrieval: Citrate buffer, pH 6.0, 15 min



**GTX636038 ELISA Image**

Sandwich ELISA detection of recombinant SARS-CoV-2 spike (trimer) protein using SARS-CoV-2 (COVID-19) Spike S2 antibody [GT8110] (GTX636038) as capture antibody at concentration of 5 µg/mL and SARS-CoV-2 (COVID-19) Spike S2 antibody [HL1038] (GTX635910) as detection antibody at concentration of 1 µg/mL. Rabbit IgG antibody (HRP) (GTX213110-01) was diluted at 1:10000 and used to detect the primary antibody.



**GTX636038 ELISA Image**

Sandwich ELISA detection of recombinant SARS-CoV-2 (COVID-19) Spike S2 (ECD) protein, human IgG Fc tag (GTX01559-pro) using SARS-CoV-2 (COVID-19) Spike S2 antibody [GT8110] (GTX636038) as capture antibody at concentration of 5 µg/mL and SARS-CoV-2 (COVID-19) Spike S2 antibody [HL1038] (GTX635910) as detection antibody at concentration of 1 µg/mL. Rabbit IgG antibody (HRP) (GTX213110-01) was diluted at 1:10000 and used to detect the primary antibody.



For full product information, images and publications, please visit our [website](#).