



SZABO SCANDIC

Part of Europa Biosite

Produktinformation



Forschungsprodukte & Biochemikalien



Zellkultur & Verbrauchsmaterial



Diagnostik & molekulare Diagnostik



Laborgeräte & Service

Weitere Information auf den folgenden Seiten!
See the following pages for more information!



Lieferung & Zahlungsart

siehe unsere [Liefer- und Versandbedingungen](#)

Zuschläge

- Mindermengenzuschlag
- Trockeneiszuschlag
- Gefahrgutzuschlag
- Expressversand

SZABO-SCANDIC HandelsgmbH

Quellenstraße 110, A-1100 Wien

T. +43(0)1 489 3961-0

F. +43(0)1 489 3961-7

mail@szabo-scandic.com

www.szabo-scandic.com

[linkedin.com/company/szaboscandic](https://www.linkedin.com/company/szaboscandic) 

OLIG2 antibody [HL1072]

Cat. No. GTX636104

| | |
|--------------------|-----------------------|
| Host | Rabbit |
| Clonality | Monoclonal |
| Isotype | IgG |
| Application | ICC/IF, IHC-P, IHC-Fr |
| Reactivity | Mouse, Rat |

Reference (1)
 Package
 100 µl, 25 µl

APPLICATION

Application Note

*Optimal dilutions/concentrations should be determined by the researcher.

| Suggested dilution | Recommended dilution |
|--------------------|----------------------|
| ICC/IF | 1:100-1:1000 |
| IHC-P | 1:100-1:1000 |
| IHC-Fr | Assay dependent |

Not tested in other applications.

Calculated MW 32 kDa. ([Note](#))

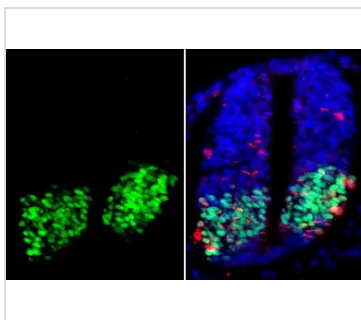
PROPERTIES

| | |
|----------------------|--|
| Form | Liquid |
| Buffer | PBS |
| Preservative | No preservative |
| Storage | Store as concentrated solution. Centrifuge briefly prior to opening vial. For short-term storage (1-2 weeks), store at 4°C. For long-term storage, aliquot and store at -20°C or below. Avoid multiple freeze-thaw cycles. |
| Concentration | 1 mg/ml (Please refer to the vial label for the specific concentration.) |
| Immunogen | Recombinant protein encompassing a sequence within the N-terminus region of human OLIG2. The exact sequence is proprietary. |
| Purification | Affinity purified by Protein A. |
| Conjugation | Unconjugated |
| Note | For laboratory research use only. Not for any clinical, therapeutic, or diagnostic use in humans or animals. Not for animal or human consumption. Purchasers shall not, and agree not to enable third parties to, analyze, copy, reverse engineer or otherwise attempt to determine the structure or sequence of the product. |



For full product information, images and publications, please visit our [website](#).

DATA IMAGES

**GTX636104 IHC-P Image**

OLIG2 antibody [HL1072] detects OLIG2 protein at nucleus by immunohistochemical analysis.

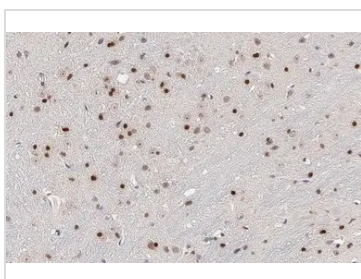
Sample: Paraffin-embedded mouse E10.5 embryo.

Green: OLIG2 stained by OLIG2 antibody [HL1072] (GTX636104) diluted at 1:200.

Red: beta Tubulin 3/ Tuj1, a neural marker, stained by beta Tubulin 3/ Tuj1 antibody [GT11710] (GTX631836) diluted at 1:.

Blue: Fluoroshield with DAPI (GTX30920).

Antigen Retrieval: Citrate buffer, pH 6.0, 15 min

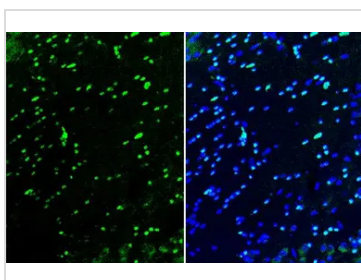
**GTX636104 IHC-P Image**

OLIG2 antibody [HL1072] detects OLIG2 protein at nucleus by immunohistochemical analysis.

Sample: Paraffin-embedded mouse brain.

OLIG2 stained by OLIG2 antibody [HL1072] (GTX636104) diluted at 1:100.

Antigen Retrieval: Citrate buffer, pH 6.0, 15 min

**GTX636104 IHC-Fr Image**

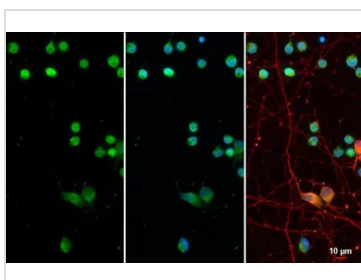
OLIG2 antibody [HL1072] detects OLIG2 protein at nucleus by immunohistochemical analysis.

Sample: Frozen-sectioned mouse brain.

Green: OLIG2 stained by OLIG2 antibody [HL1072] (GTX636104) diluted at 1:100.

Blue: Fluoroshield with DAPI (GTX30920).

Antigen Retrieval: ice-cold MeOH for 5 min

**GTX636104 ICC/IF Image**

Olig2 antibody detects Olig2 protein at oligodendrocyte by immunofluorescent analysis.

Sample: DIV10 rat cortical neuron and glia cells were fixed in 4% paraformaldehyde at RT for 15 min.

Green: Olig2 stained by Olig2 antibody (GTX636104) diluted at 1:500.

Red: Tau, a marker, stained by Tau antibody [GT287] (GTX634809) diluted at 1:500.

**GTX636104 IHC-P Image**

OLIG2 antibody [HL1072] detects OLIG2 protein at nucleus by immunohistochemical analysis.

Sample: Paraffin-embedded mouse brain.

OLIG2 stained by OLIG2 antibody [HL1072] (GTX636104) diluted at 1:100.

Antigen Retrieval: Citrate buffer, pH 6.0, 15 min



For full product information, images and publications, please visit our [website](#).