



SZABO SCANDIC

Part of Europa Biosite

Produktinformation



Forschungsprodukte & Biochemikalien



Zellkultur & Verbrauchsmaterial



Diagnostik & molekulare Diagnostik



Laborgeräte & Service

Weitere Information auf den folgenden Seiten!
See the following pages for more information!



Lieferung & Zahlungsart

siehe unsere [Liefer- und Versandbedingungen](#)

Zuschläge

- Mindermengenzuschlag
- Trockeneiszuschlag
- Gefahrgutzuschlag
- Expressversand

SZABO-SCANDIC HandelsgmbH

Quellenstraße 110, A-1100 Wien

T. +43(0)1 489 3961-0

F. +43(0)1 489 3961-7

mail@szabo-scandic.com

www.szabo-scandic.com

[linkedin.com/company/szaboscandic](https://www.linkedin.com/company/szaboscandic) 

Influenza A virus Nucleoprotein antibody [HL1098]

Cat. No. GTX636282

Host	Rabbit
Clonality	Monoclonal
Isotype	IgG
Application	WB, ICC/IF, ELISA, Sandwich ELISA
Reactivity	Influenza A virus

Package
100 µl, 25 µl

APPLICATION

Application Note

*Optimal dilutions/concentrations should be determined by the researcher.

Suggested dilution	Recommended dilution
WB	1:1000-1:10000
ICC/IF	1:100-1:1000
ELISA	Assay dependent
Sandwich ELISA	Assay dependent

Note : Capture : GTX636282, Detection : GTX636318.

Please notice that GTX636318 needs to be conjugated to HRP to function as the detection antibody when paired with GTX636282. A Please contact us for custom HRP-conjugated antibody.

Not tested in other applications.

PROPERTIES

Form	Liquid
Buffer	PBS
Preservative	No Preservative
Storage	Store as concentrated solution. Centrifuge briefly prior to opening vial. For short-term storage (1-2 weeks), store at 4°C. For long-term storage, aliquot and store at -20°C or below. Avoid multiple freeze-thaw cycles.
Concentration	1 mg/ml (Please refer to the vial label for the specific concentration.)
Immunogen	Recombinant protein encompassing a sequence within the C-terminus region of Influenza A virus H1N1pdm09 Nucleoprotein (A/California/7/2009). The exact sequence is proprietary.
Purification	Affinity purified by Protein A.
Conjugation	Unconjugated

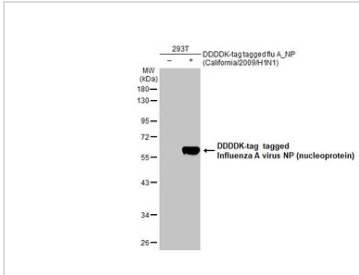


For full product information, images and publications, please visit our [website](#).

For laboratory research use only. Not for any clinical, therapeutic, or diagnostic use in humans or animals. Not for animal or human consumption.

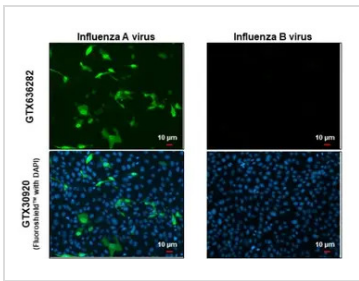
Note
 Purchasers shall not, and agree not to enable third parties to, analyze, copy, reverse engineer or otherwise attempt to determine the structure or sequence of the product.

DATA IMAGES



GTX636282 WB Image

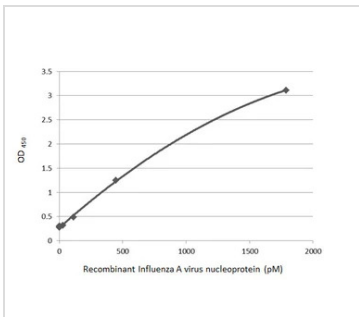
Non-transfected (-) and transfected (+) 293T whole cell extracts (30 µg) were separated by 10% SDS-PAGE, and the membrane was blotted with Influenza A virus NP (nucleoprotein) antibody [HL1098] (GTX636282) diluted at 1:5000. The HRP-conjugated anti-rabbit IgG antibody (GTX213110-01) was used to detect the primary antibody.



GTX636282 ICC/IF Image

Immunofluorescent analysis of influenza virus infected cells using Influenza A virus Nucleoprotein antibody (GTX636282).

Sample: Influenza A and B Virus infected cells slide.
 Green: Influenza A virus Nucleoprotein antibody (GTX636282) diluted at 1:100.



GTX636282 ELISA Image

Sandwich ELISA detection of recombinant Influenza A virus Nucleoprotein protein (A/California/2009 (H1N1)), DDDDK Tag (GTX135904-pro) using antibodies as below.

Capture: Influenza A virus Nucleoprotein antibody [HL1098] (GTX636282) (5 µg/mL)

Detection: HRP-conjugated Influenza A virus Nucleoprotein antibody [HL1103] (GTX636318) (1 µg/mL)
 Please notice that GTX636318 needs to be conjugated to HRP to function as the detection antibody when paired with GTX636282. Please contact us for custom HRP-conjugated antibody.



For full product information, images and publications, please visit our [website](#).