



SZABO SCANDIC

Part of Europa Biosite

Produktinformation



Forschungsprodukte & Biochemikalien



Zellkultur & Verbrauchsmaterial



Diagnostik & molekulare Diagnostik



Laborgeräte & Service

Weitere Information auf den folgenden Seiten!
See the following pages for more information!



Lieferung & Zahlungsart

siehe unsere [Liefer- und Versandbedingungen](#)

Zuschläge

- Mindermengenzuschlag
- Trockeneiszuschlag
- Gefahrgutzuschlag
- Expressversand

SZABO-SCANDIC HandelsgmbH

Quellenstraße 110, A-1100 Wien

T. +43(0)1 489 3961-0

F. +43(0)1 489 3961-7

mail@szabo-scandic.com

www.szabo-scandic.com

[linkedin.com/company/szaboscandic](https://www.linkedin.com/company/szaboscandic) 

Somatostatin antibody [HL1101]

Cat. No. GTX636297

Host	Rabbit
Clonality	Monoclonal
Isotype	IgG
Application	WB, ICC/IF, IHC-P
Reactivity	Mouse, Rat, Cat, Dog

Package
100 µl, 25 µl

APPLICATION

Application Note

*Optimal dilutions/concentrations should be determined by the researcher.

Suggested dilution	Recommended dilution
WB	1:500-1:3000
ICC/IF	Assay dependent
IHC-P	Assay dependent

Not tested in other applications.

Calculated MW 13 kDa. ([Note](#))

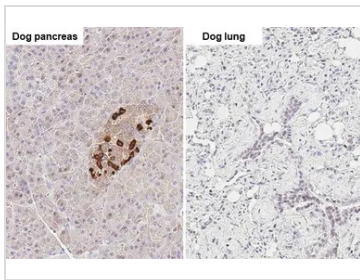
PROPERTIES

Form	Liquid
Buffer	PBS
Preservative	No Preservative
Storage	Store as concentrated solution. Centrifuge briefly prior to opening vial. For short-term storage (1-2 weeks), store at 4°C. For long-term storage, aliquot and store at -20°C or below. Avoid multiple freeze-thaw cycles.
Concentration	1 mg/ml (Please refer to the vial label for the specific concentration.)
Immunogen	Carrier-protein conjugated synthetic peptide encompassing a sequence within the center region of mouse Somatostatin. The exact sequence is proprietary.
Purification	Affinity purified by Protein A.
Conjugation	Unconjugated
Note	For laboratory research use only. Not for any clinical, therapeutic, or diagnostic use in humans or animals. Not for animal or human consumption. Purchasers shall not, and agree not to enable third parties to, analyze, copy, reverse engineer or otherwise attempt to determine the structure or sequence of the product.



For full product information, images and publications, please visit our [website](#).

DATA IMAGES

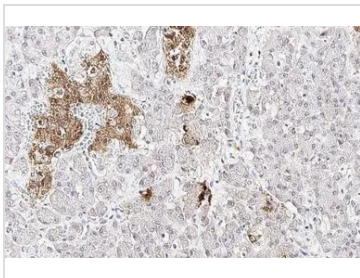
**GTX636297 IHC-P Image**

Somatostatin antibody [HL1101] detects Somatostatin protein at cytoplasm by immunohistochemical analysis.

Sample: Paraffin-embedded dog tissue.

Somatostatin stained by Somatostatin antibody [HL1101] (GTX636297) diluted at 1:100.

Antigen Retrieval: Citrate buffer, pH 6.0, 15 min

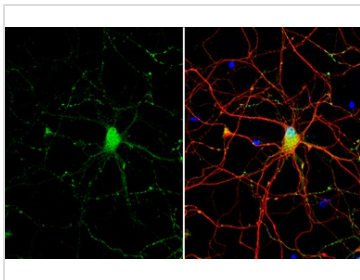
**GTX636297 IHC-P Image**

Somatostatin antibody [HL1101] detects Somatostatin protein at cytoplasm by immunohistochemical analysis.

Sample: Paraffin-embedded cat pancreas.

Somatostatin stained by Somatostatin antibody [HL1101] (GTX636297) diluted at 1:100.

Antigen Retrieval: Citrate buffer, pH 6.0, 15 min

**GTX636297 ICC/IF Image**

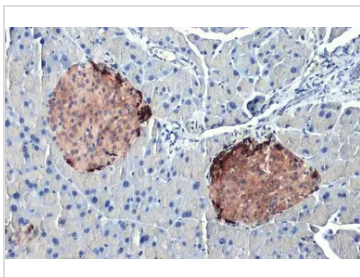
Somatostatin antibody [HL1101] detects Somatostatin protein at nucleus and vesicle by immunofluorescent analysis.

Sample: DIV9 rat E18 primary cortical neuron cells were fixed in 4% paraformaldehyde at RT for 15 min.

Green: Somatostatin stained by Somatostatin antibody [HL1101] (GTX636297) diluted at 1:250.

Red: Tau, an axon marker, stained by Tau antibody [GT287] (GTX634809) diluted at 1:500.

Blue: Fluoroshield with DAPI (GTX30920).

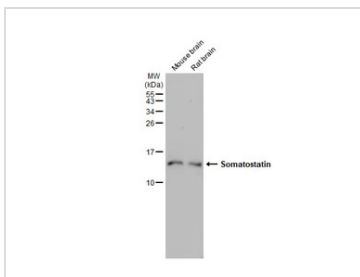
**GTX636297 IHC-P Image**

Somatostatin antibody [HL1101] detects secreted Somatostatin protein by immunohistochemical analysis.

Sample: Paraffin-embedded mouse pancreas.

Somatostatin stained by Somatostatin antibody [HL1101] (GTX636297) diluted at 1:1000.

Antigen Retrieval: Citrate buffer, pH 6.0, 15 min

**GTX636297 WB Image**

Various tissue extracts (50 μ g) were separated by 15% SDS-PAGE, and the membrane was blotted with Somatostatin antibody [HL1101] (GTX636297) diluted at 1:5000. The HRP-conjugated anti-rabbit IgG antibody (GTX213110-01) was used to detect the primary antibody.



For full product information, images and publications, please visit our [website](#).