



# SZABO SCANDIC

Part of Europa Biosite

## Produktinformation



Forschungsprodukte & Biochemikalien



Zellkultur & Verbrauchsmaterial



Diagnostik & molekulare Diagnostik



Laborgeräte & Service

Weitere Information auf den folgenden Seiten!  
See the following pages for more information!



### Lieferung & Zahlungsart

siehe unsere [Liefer- und Versandbedingungen](#)

### Zuschläge

- Mindermengenzuschlag
- Trockeneiszuschlag
- Gefahrgutzuschlag
- Expressversand

### SZABO-SCANDIC HandelsgmbH

Quellenstraße 110, A-1100 Wien

T. +43(0)1 489 3961-0

F. +43(0)1 489 3961-7

[mail@szabo-scandic.com](mailto:mail@szabo-scandic.com)

[www.szabo-scandic.com](http://www.szabo-scandic.com)

[linkedin.com/company/szaboscandic](https://www.linkedin.com/company/szaboscandic) 

## Influenza A virus Nucleoprotein antibody [HL1103]

Cat No. GTX636318

<b>Host</b>	Rabbit
<b>Clonality</b>	Monoclonal
<b>Isotype</b>	IgG
<b>Application</b>	WB, ICC/IF, ELISA, Lateral Flow, Sandwich ELISA
<b>Reactivity</b>	Influenza A virus

★★★★★ Review ( 1 )

Package  
100 µl, 25 µl

## APPLICATION

## Application Note

\*Optimal dilutions/concentrations should be determined by the researcher.

Suggested dilution	Dilution
WB	Assay dependent
ICC/IF	Assay dependent
ELISA	Assay dependent
Lateral Flow	Assay dependent
Sandwich ELISA	Assay dependent

**Note : Capture : GTX636318, Detection : GTX636199 / GTX636247 or Capture : GTX636199 / GTX636247 / GTX636282, Detection : GTX636318.**

**Please notice that the detection antibodies need to be conjugated to HRP when paired with the capture antibodies. A Please contact us for custom HRP-conjugated antibody.**

Not tested in other applications.

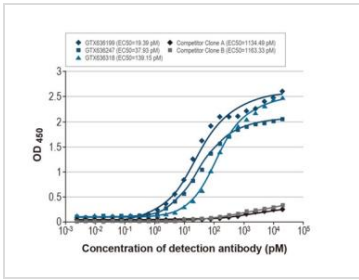
## PROPERTIES

<b>Form</b>	Liquid
<b>Buffer</b>	PBS
<b>Storage</b>	Store as concentrated solution. Centrifuge briefly prior to opening vial. For short-term storage (1-2 weeks), store at 4°C. For long-term storage, aliquot and store at -20°C or below. Avoid multiple freeze-thaw cycles.
<b>Concentration</b>	1 mg/ml (Please refer to the vial label for the specific concentration.)
<b>Immunogen</b>	Recombinant protein encompassing a sequence within the center region of Influenza A virus Nucleoprotein (A/Kansas/14/2017(H3N2)). The exact sequence is proprietary.
<b>Purification</b>	Affinity purified by Protein A.
<b>Conjugation</b>	Unconjugated
<b>Note</b>	For laboratory use only. Not for any clinical, therapeutic, or diagnostic use in humans or animals. Not for animal or human consumption.



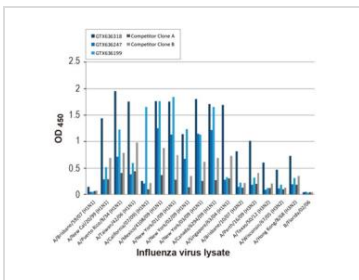
For full product information, images and publications, please visit our [website](#).

DATA IMAGES



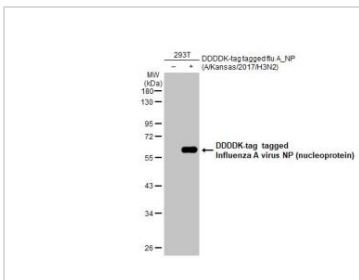
**GTX636318 ELISA Image**

Indirect ELISA analysis was performed by coating a plate with recombinant influenza A virus nucleoprotein protein (A/Kansas/2017 (H3N2)), DDDDK Tag (GTX135903-pro) (50 ng), and probing with the specified influenza A virus nucleoprotein antibodies at the indicated concentrations. Goat anti-rabbit IgG antibody (HRP) (GTX213110-01) (1:10000) or goat anti-mouse IgG antibody (HRP) (GTX213111-01) (1:10000) were used to detect the bound primary antibodies.



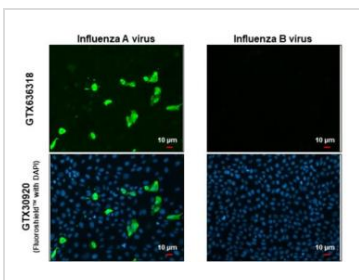
**GTX636318 ELISA Image**

Indirect ELISA analysis was performed by coating a plate with viral lysates (1 µg) derived from different strains of influenza A virus or influenza B virus and probing with the specified influenza A virus nucleoprotein antibodies (1 µg/ml). Goat anti-rabbit IgG antibody (HRP) (GTX213110-01) (1:10000) or goat anti-mouse IgG antibody (HRP) (GTX213111-01) (1:10000) were used to detect the bound primary antibodies.



**GTX636318 WB Image**

Non-transfected (-) and transfected (+) 293T whole cell extracts (30 µg) were separated by 10% SDS-PAGE, and the membrane was blotted with Influenza A virus Nucleoprotein antibody [HL1103] (GTX636318) diluted at 1:5000. The HRP-conjugated anti-rabbit IgG antibody (GTX213110-01) was used to detect the primary antibody.

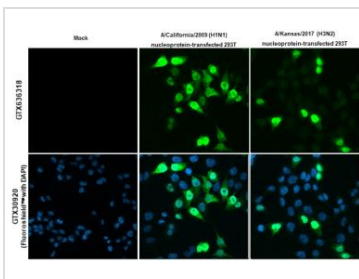


**GTX636318 ICC/IF Image**

Immunofluorescent analysis of influenza virus infected cells using Influenza A virus Nucleoprotein antibody (GTX636318).

Sample: Influenza A and B Virus infected cells slide.

Green: Influenza A virus Nucleoprotein antibody (GTX636318) diluted at 1:100.



**GTX636318 ICC/IF Image**

Influenza A virus Nucleoprotein antibody (GTX636318) detects overexpressed Influenza virus Nucleoprotein protein by immunofluorescent analysis.

Sample: Mock and transfected 293T cells were fixed in 4% paraformaldehyde at RT for 15 min.

Green: Influenza A virus Nucleoprotein stained by Influenza A virus Nucleoprotein antibody (GTX636318) diluted at 1:2000.



For full product information, images and publications, please visit our [website](#).