



SZABO SCANDIC

Part of Europa Biosite

Produktinformation



Forschungsprodukte & Biochemikalien



Zellkultur & Verbrauchsmaterial



Diagnostik & molekulare Diagnostik



Laborgeräte & Service

Weitere Information auf den folgenden Seiten!
See the following pages for more information!



Lieferung & Zahlungsart

siehe unsere [Liefer- und Versandbedingungen](#)

Zuschläge

- Mindermengenzuschlag
- Trockeneiszuschlag
- Gefahrgutzuschlag
- Expressversand

SZABO-SCANDIC HandelsgmbH

Quellenstraße 110, A-1100 Wien

T. +43(0)1 489 3961-0

F. +43(0)1 489 3961-7

mail@szabo-scandic.com

www.szabo-scandic.com

[linkedin.com/company/szaboscandic](https://www.linkedin.com/company/szaboscandic) 

BrdU antibody [HL1111]

Cat. No. GTX636326

| | |
|--------------------|---------------------|
| Host | Rabbit |
| Clonality | Monoclonal |
| Isotype | IgG |
| Application | ICC/IF, IHC-P |
| Reactivity | Species independent |

Package
100 µl, 25 µl

APPLICATION

Application Note

*Optimal dilutions/concentrations should be determined by the researcher.

| Suggested dilution | Recommended dilution |
|--------------------|----------------------|
| ICC/IF | 1:100-1:2000 |
| IHC-P | Assay dependent |

Not tested in other applications.

PROPERTIES

| | |
|----------------------|--|
| Form | Liquid |
| Buffer | PBS |
| Preservative | No Preservative |
| Storage | Store as concentrated solution. Centrifuge briefly prior to opening vial. For short-term storage (1-2 weeks), store at 4°C. For long-term storage, aliquot and store at -20°C or below. Avoid multiple freeze-thaw cycles. |
| Concentration | 1 mg/ml (Please refer to the vial label for the specific concentration.) |
| Immunogen | The immunogen used to generate this antibody corresponds to BrdU. |
| Purification | Affinity purified by Protein A. |
| Conjugation | Unconjugated |

Note

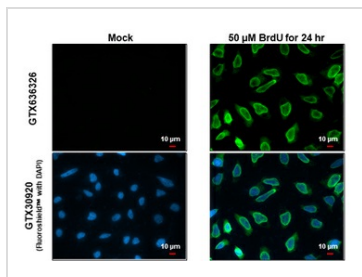
For laboratory research use only. Not for any clinical, therapeutic, or diagnostic use in humans or animals. Not for animal or human consumption.

Purchasers shall not, and agree not to enable third parties to, analyze, copy, reverse engineer or otherwise attempt to determine the structure or sequence of the product.



For full product information, images and publications, please visit our [website](#).

DATA IMAGES

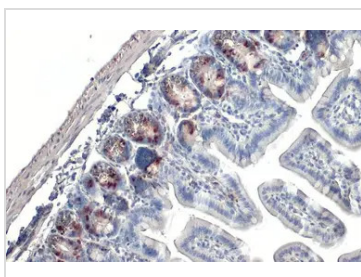
**GTX636326 ICC/IF Image**

BrdU antibody [HL1111] detects BrdU protein at nucleolus by immunofluorescent analysis.

Sample: Mock and treated HeLa cells were fixed in 4% paraformaldehyde at RT for 15 min.

Green: BrdU stained by BrdU antibody [HL1111] (GTX636326) diluted at 1:2000.

Blue: Fluoroshield with DAPI (GTX30920).

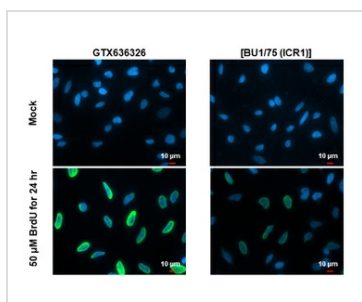
**GTX636326 IHC-P Image**

BrdU antibody [HL1111] detects Bromodeoxyuridine(BrdU) at nucleus in mouse BrdU treated intestine by immunohistochemical analysis.

Sample: Paraffin-embedded mouse intestinal tissue pulsed with BrdU.

BrdU stained by BrdU antibody [HL1111] (GTX636326) diluted at 1:100.

Antigen Retrieval: Citrate buffer, pH 6.0, 15 min

**GTX636326 ICC/IF Image**

BrdU antibody [HL1111] detects BrdU protein at nucleus by immunofluorescent analysis.

Sample: Mock and treated HeLa cells were fixed in 4% paraformaldehyde at RT for 15 min.

Green: BrdU stained by BrdU antibody [HL1111] (GTX636326) diluted at 1:2000 and competitor's antibody ([BU1/75 (ICR1)]) diluted at 1:2000.

Blue: Fluoroshield with DAPI (GTX30920).

*Competitor's antibody is not affiliated with GeneTex and does not endorse this product.



For full product information, images and publications, please visit our [website](#).