



SZABO SCANDIC

Part of Europa Biosite

Produktinformation



Forschungsprodukte & Biochemikalien



Zellkultur & Verbrauchsmaterial



Diagnostik & molekulare Diagnostik



Laborgeräte & Service

Weitere Information auf den folgenden Seiten!
See the following pages for more information!



Lieferung & Zahlungsart

siehe unsere [Liefer- und Versandbedingungen](#)

Zuschläge

- Mindermengenzuschlag
- Trockeneiszuschlag
- Gefahrgutzuschlag
- Expressversand

SZABO-SCANDIC HandelsgmbH

Quellenstraße 110, A-1100 Wien

T. +43(0)1 489 3961-0

F. +43(0)1 489 3961-7

mail@szabo-scandic.com

www.szabo-scandic.com

[linkedin.com/company/szaboscandic](https://www.linkedin.com/company/szaboscandic) 

C-Peptide antibody [HL1159]

Cat. No. GTX636463

Host	Rabbit
Clonality	Monoclonal
Isotype	IgG
Application	IHC-P, ELISA
Reactivity	Human, Mouse, Rat

Package
100 µl, 25 µl

APPLICATION

Application Note

*Optimal dilutions/concentrations should be determined by the researcher.

Suggested dilution	Recommended dilution
IHC-P	1:100-1:10000
ELISA	Assay dependent

Not tested in other applications.

Calculated MW 12 kDa. ([Note](#))

PROPERTIES

Form	Liquid
Buffer	PBS
Preservative	No Preservative
Storage	Store as concentrated solution. Centrifuge briefly prior to opening vial. For short-term storage (1-2 weeks), store at 4°C. For long-term storage, aliquot and store at -20°C or below. Avoid multiple freeze-thaw cycles.
Concentration	1 mg/ml (Please refer to the vial label for the specific concentration.)
Immunogen	Synthetic peptide corresponding to human c-peptide.
Purification	Affinity purified by Protein A.
Conjugation	Unconjugated

Note

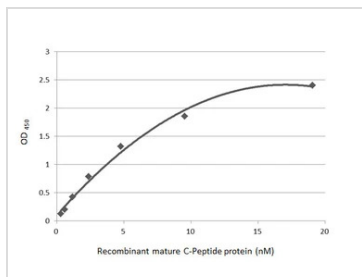
For laboratory research use only. Not for any clinical, therapeutic, or diagnostic use in humans or animals. Not for animal or human consumption.

Purchasers shall not, and agree not to enable third parties to, analyze, copy, reverse engineer or otherwise attempt to determine the structure or sequence of the product.

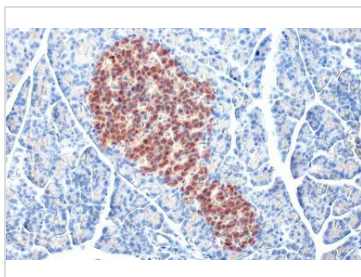


For full product information, images and publications, please visit our [website](#).

DATA IMAGES

**GTX636463 ELISA Image**

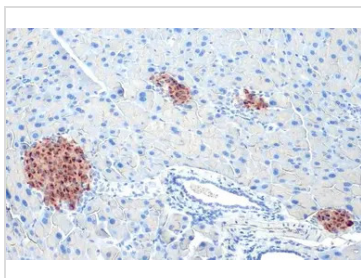
Indirect ELISA analysis performed by coating plate with recombinant mature C-Peptide protein (19.05-0.3 nM). Coated protein was probed with C-Peptide antibody [HL1159] (GTX636463) (1 µg/mL). Goat anti-rabbit IgG antibody (HRP) (GTX213110-01) (1:10000) was used to detect bound primary antibody.

**GTX636463 IHC-P Image**

C-Peptide antibody [HL1159] detects secreted C-Peptide protein by immunohistochemical analysis. Sample: Paraffin-embedded rat pancreas.

C-Peptide stained by C-Peptide antibody [HL1159] (GTX636463) diluted at 1:10000.

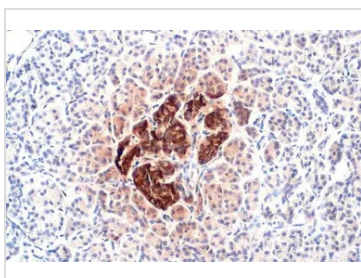
Antigen Retrieval: Citrate buffer, pH 6.0, 15 min

**GTX636463 IHC-P Image**

C-Peptide antibody [HL1159] detects secreted C-Peptide protein by immunohistochemical analysis. Sample: Paraffin-embedded mouse pancreas.

C-Peptide stained by C-Peptide antibody [HL1159] (GTX636463) diluted at 1:10000.

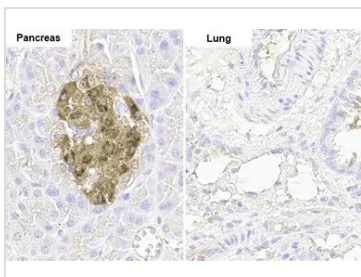
Antigen Retrieval: Citrate buffer, pH 6.0, 15 min

**GTX636463 IHC-P Image**

C-Peptide antibody [HL1159] detects secreted C-Peptide protein by immunohistochemical analysis. Sample: Paraffin-embedded human pancreas.

C-Peptide stained by C-Peptide antibody [HL1159] (GTX636463) diluted at 1:10000.

Antigen Retrieval: Citrate buffer, pH 6.0, 15 min

**GTX636463 IHC-P Image**

C-Peptide antibody [HL1159] detects C-Peptide protein by immunohistochemical analysis.

Sample: Paraffin-embedded rat tissues.

C-Peptide stained by C-Peptide antibody [HL1159] (GTX636463) diluted at 1:100.

Antigen Retrieval: Citrate buffer, pH 6.0, 15 min



For full product information, images and publications, please visit our [website](#).