



SZABO SCANDIC

Part of Europa Biosite

Produktinformation



Forschungsprodukte & Biochemikalien



Zellkultur & Verbrauchsmaterial



Diagnostik & molekulare Diagnostik



Laborgeräte & Service

Weitere Information auf den folgenden Seiten!
See the following pages for more information!



Lieferung & Zahlungsart

siehe unsere [Liefer- und Versandbedingungen](#)

Zuschläge

- Mindermengenzuschlag
- Trockeneiszuschlag
- Gefahrgutzuschlag
- Expressversand

SZABO-SCANDIC HandelsgmbH

Quellenstraße 110, A-1100 Wien

T. +43(0)1 489 3961-0

F. +43(0)1 489 3961-7

mail@szabo-scandic.com

www.szabo-scandic.com

[linkedin.com/company/szaboscandic](https://www.linkedin.com/company/szaboscandic) 

C1 inhibitor antibody [HL1196]

Cat. No. GTX636508

Host	Rabbit
Clonality	Monoclonal
Isotype	IgG
Application	WB, ICC/IF, IHC-P
Reactivity	Human, Mouse, Rat

Package
100 µl, 25 µl

APPLICATION

Application Note

*Optimal dilutions/concentrations should be determined by the researcher.

Suggested dilution	Recommended dilution
WB	1:500-1:10000
ICC/IF	Assay dependent
IHC-P	Assay dependent

Not tested in other applications.

Calculated MW 55 kDa. ([Note](#))

PROPERTIES

Form	Liquid
Buffer	PBS
Preservative	No Preservative
Storage	Store as concentrated solution. Centrifuge briefly prior to opening vial. For short-term storage (1-2 weeks), store at 4°C. For long-term storage, aliquot and store at -20°C or below. Avoid multiple freeze-thaw cycles.
Concentration	0.5 mg/ml (Please refer to the vial label for the specific concentration.)
Immunogen	Recombinant protein encompassing a sequence within the center region of human C1 inhibitor. The exact sequence is proprietary.
Purification	Affinity purified by Protein A.
Conjugation	Unconjugated

Note

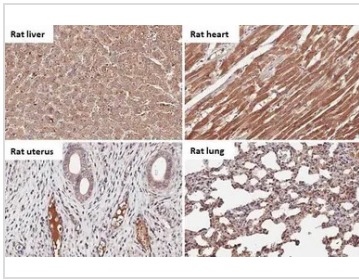
For laboratory research use only. Not for any clinical, therapeutic, or diagnostic use in humans or animals. Not for animal or human consumption.

Purchasers shall not, and agree not to enable third parties to, analyze, copy, reverse engineer or otherwise attempt to determine the structure or sequence of the product.



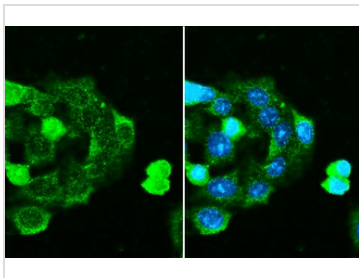
For full product information, images and publications, please visit our [website](#).

DATA IMAGES



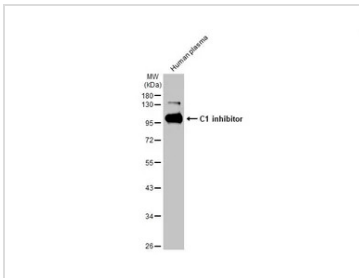
GTX636508 IHC-P Image

C1 inhibitor antibody [HL1196] detects C1 inhibitor protein by immunohistochemical analysis.
 Sample: Paraffin-embedded rat tissues.
 C1 inhibitor stained by C1 inhibitor antibody [HL1196] (GTX636508) diluted at 1:100.
 Antigen Retrieval: Citrate buffer, pH 6.0, 15 min



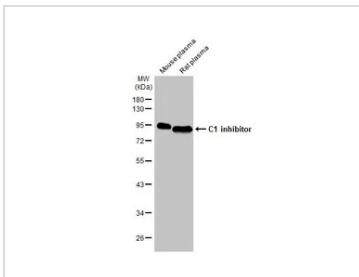
GTX636508 ICC/IF Image

C1 inhibitor antibody [HL1196] detects C1 inhibitor protein by immunofluorescent analysis.
 Sample: HepG2 cells were fixed in ice-cold MeOH for 10 min.
 Green: C1 inhibitor stained by C1 inhibitor antibody [HL1196] (GTX636508) diluted at 1:500.
 Blue: Fluoroshield with DAPI (GTX30920).



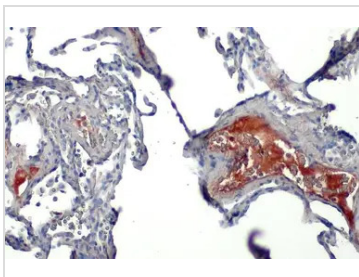
GTX636508 WB Image

Human plasma (30 µg) was separated by 10% SDS-PAGE, and the membrane was blotted with C1 inhibitor antibody [HL1196] (GTX636508) diluted at 1:10000. The HRP-conjugated anti-rabbit IgG antibody (GTX213110-01) was used to detect the primary antibody.



GTX636508 WB Image

Mouse plasma and rat plasma (30 µg) were separated by 10% SDS-PAGE, and the membrane was blotted with C1 inhibitor antibody [HL1196] (GTX636508) diluted at 1:2000. The HRP-conjugated anti-rabbit IgG antibody (GTX213110-01) was used to detect the primary antibody.



GTX636508 IHC-P Image

C1 inhibitor antibody [HL1196] detects secreted C1 inhibitor protein by immunohistochemical analysis.
 Sample: Paraffin-embedded human breast carcinoma.
 C1 inhibitor stained by C1 inhibitor antibody [HL1196] (GTX636508) diluted at 1:100.
 Antigen Retrieval: Citrate buffer, pH 6.0, 15 min



For full product information, images and publications, please visit our [website](#).