



SZABO SCANDIC

Part of Europa Biosite

Produktinformation



Forschungsprodukte & Biochemikalien



Zellkultur & Verbrauchsmaterial



Diagnostik & molekulare Diagnostik



Laborgeräte & Service

Weitere Information auf den folgenden Seiten!
See the following pages for more information!



Lieferung & Zahlungsart

siehe unsere [Liefer- und Versandbedingungen](#)

Zuschläge

- Mindermengenzuschlag
- Trockeneiszuschlag
- Gefahrgutzuschlag
- Expressversand

SZABO-SCANDIC HandelsgmbH

Quellenstraße 110, A-1100 Wien

T. +43(0)1 489 3961-0

F. +43(0)1 489 3961-7

mail@szabo-scandic.com

www.szabo-scandic.com

[linkedin.com/company/szaboscandic](https://www.linkedin.com/company/szaboscandic) 

IL6 antibody [GT1535]

Cat. No. GTX636571

Host	Mouse
Clonality	Monoclonal
Isotype	IgG2b
Application	ICC/IF, ELISA, Sandwich ELISA
Reactivity	Human

Package
100 µl, 25 µl

APPLICATION

Application Note

*Optimal dilutions/concentrations should be determined by the researcher.

Suggested dilution	Recommended dilution
ICC/IF	Assay dependent
ELISA	Assay dependent
Sandwich ELISA	Assay dependent

Note : Capture : GTX636571, Detection : GTX636473 / GTX638598

Not tested in other applications.

Calculated MW 24 kDa. ([Note](#))

PROPERTIES

Form	Liquid
Buffer	1XPBS pH7, 20% Glycerol
Preservative	No Preservative
Storage	Store as concentrated solution. Centrifuge briefly prior to opening vial. For short-term storage (1-2 weeks), store at 4°C. For long-term storage, aliquot and store at -20°C or below. Avoid multiple freeze-thaw cycles.
Concentration	1 mg/ml (Please refer to the vial label for the specific concentration.)
Immunogen	Full length human IL6 Recombinant protein
Purification	Affinity purified by Protein G.
Conjugation	Unconjugated

Note

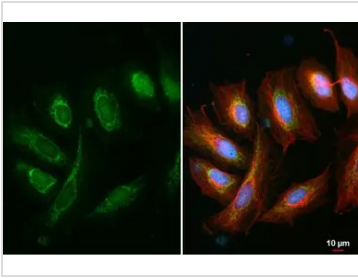
For laboratory research use only. Not for any clinical, therapeutic, or diagnostic use in humans or animals. Not for animal or human consumption.

Purchasers shall not, and agree not to enable third parties to, analyze, copy, reverse engineer or otherwise attempt to determine the structure or sequence of the product.



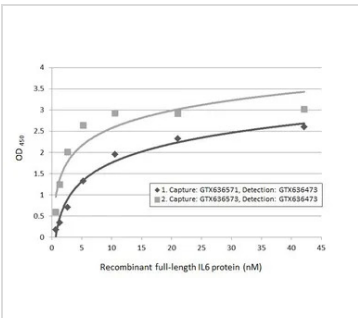
For full product information, images and publications, please visit our [website](#).

DATA IMAGES



GTX636571 ICC/IF Image

IL6 antibody [GT1535] detects IL6 protein at mitochondria and cytoplasm by immunofluorescent analysis.
 Sample: SiHa cells were fixed in 4% paraformaldehyde at RT for 15 min.
 Green: IL6 stained by IL6 antibody [GT1535] (GTX636571) diluted at 1:500.
 Red: beta Tubulin, a cytoskeleton marker, stained by beta Tubulin antibody (GTX101279) diluted at 1:1000.
 Blue: Fluoroshield with DAPI (GTX30920).



GTX636571 ELISA Image

Sandwich ELISA detection of Human IL6 protein, His tag (GTX135982-pro) using ELISA pairs below.

Pair 1:

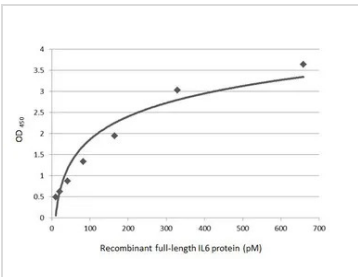
Capture: IL6 antibody [GT519-1] (GTX636573) (5 µg/mL)

Detection: IL6 antibody [HL1168] (GTX636473) (1 µg/mL)

Pair 2:

Capture: IL6 antibody [GT1535] (GTX636571) (5 µg/mL)

Detection: IL6 antibody [HL1168] (GTX636473) (1 µg/mL)



GTX636571 ELISA Image

Sandwich ELISA detection of recombinant Human IL6 protein, His tag (GTX135982-pro) using antibodies as below.

Capture: IL6 antibody [GT1535] (GTX636571) (5 µg/mL)

Detection: IL6 antibody [HL2389] (GTX638598) (1 µg/mL)



For full product information, images and publications, please visit our [website](#).